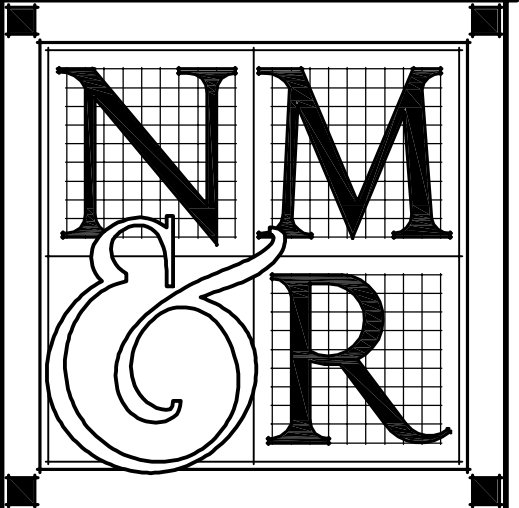


A WINDOW REPLACEMENT FOR BURNEY ELEMENTARY SCHOOL

37403 Toronto Street, Burney, California

Copyright © 2015
All ideas, designs, arrangements and plans indicated or represented by this drawing are owned by, and the property of, NICHOLS, MELBURG & ROSSETTO and were created, evolved and developed for use on, and in conjunction with, the specified project. None of such ideas, designs, arrangements or plans shall be used by, or disclosed to any person, firm or corporation for any purpose whatsoever without the written permission of NICHOLS, MELBURG & ROSSETTO.



**NICHOLS
MELBURG
ROSSETTO**
ARCHITECTS + ENGINEERS
300 KNOLLCREST DRIVE
REDDING, CA 96002
(530) 222-3300 (530) 222-3538 FAX
http://www.nmrdesign.com

CONSULTANTS

APPLICABLE CODES

APPLICABLE CODES: ALL WORK PERFORMED & PRODUCTS FURNISHED SHALL COMPLY AS APPLICABLE WITH THE LATEST REGULATIONS OF:

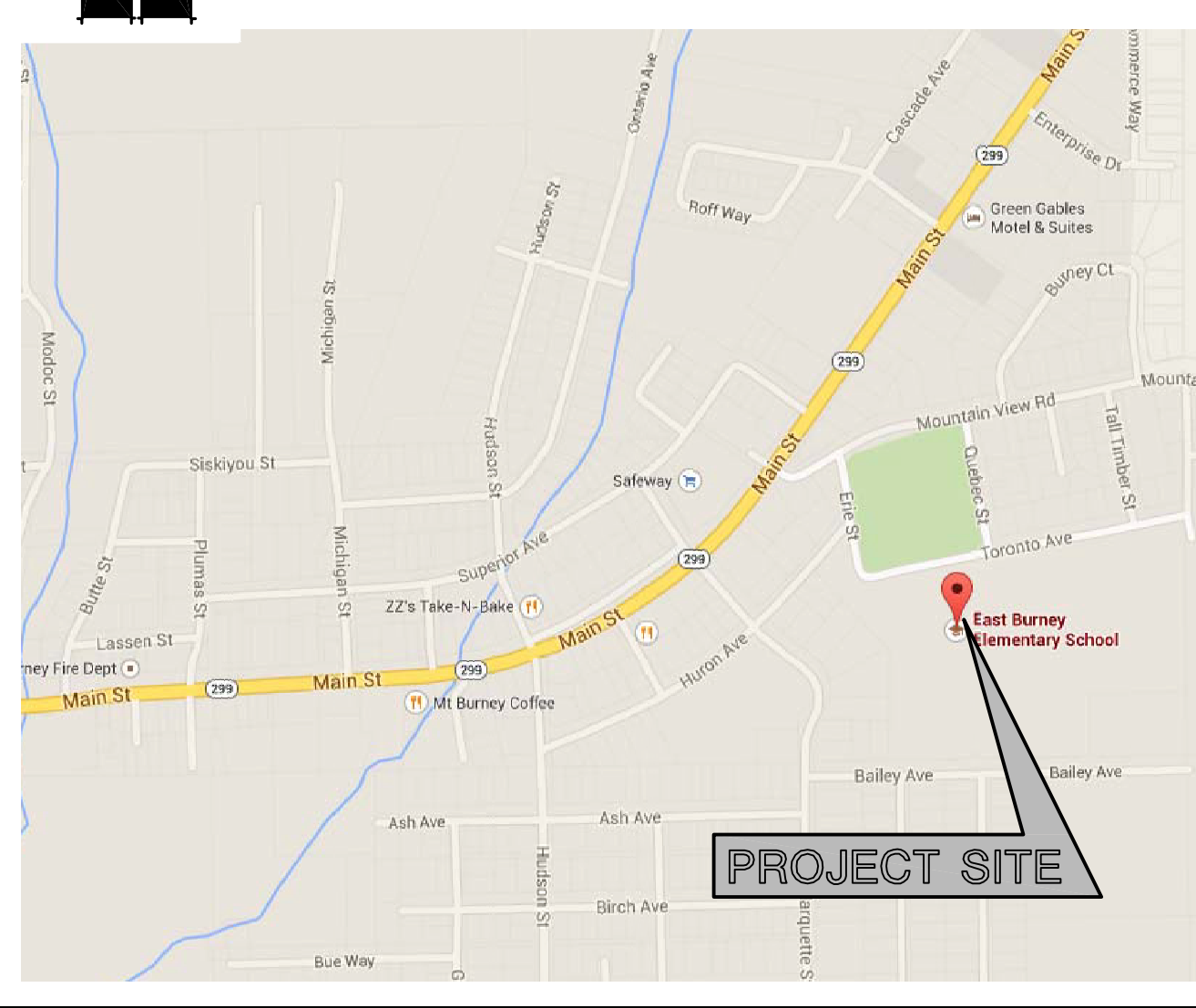
- 2013 BUILDING STANDARDS ADMINISTRATIVE CODE, PART 1, TITLE 24 C.C.R.
- 2013 CALIFORNIA BUILDING CODE (CBC), PART 2, TITLE 24 C.C.R. (2012 INTERNATIONAL BUILDING CODE VOLUMES 1-2 AND 2013 CALIFORNIA AMENDMENTS)
- 2013 CALIFORNIA ELECTRICAL CODE (CEC), PART 3, TITLE 24 C.C.R. (2011 NATIONAL ELECTRICAL CODE AND 2013 CALIFORNIA AMENDMENTS)
- 2013 CALIFORNIA MECHANICAL CODE (CMC), PART 4, TITLE 24 C.C.R. (2012 UNIFORM MECHANICAL CODE AND 2013 CALIFORNIA AMENDMENTS)
- 2013 CALIFORNIA PLUMBING CODE (CPC), PART 5, TITLE 24 C.C.R. (2012 PLUMBING CODE AND 2013 CALIFORNIA AMENDMENTS)
- 2013 CALIFORNIA ENERGY CODE, PART 6, TITLE 24 C.C.R.
- 2013 CALIFORNIA FIRE CODE, PART 9, TITLE 24 C.C.R. (2012 INTERNATIONAL FIRE CODE AND 2013 CALIFORNIA AMENDMENTS)
- 2013 CALIFORNIA EXISTING BUILDING CODE, PART 10, TITLE 24 C.C.R. (2012 INTERNATIONAL EXISTING BUILDING CODE AND 2013 CALIFORNIA AMENDMENTS)
- 2013 CALIFORNIA "GREEN" BUILDING STANDARDS CODE, PART 11, TITLE 24 C.C.R.
- 2013 CALIFORNIA REFERENCED STANDARDS, PART 12, TITLE 24 C.C.R.
- TITLE 8 C.C.R., CHAPTER 4, SUB-CHAPTER 6-ELEVATOR SAFETY ORDERS
- TITLE 19 C.C.R., PUBLIC SAFETY, STATE FIRE MARSHAL REGULATIONS

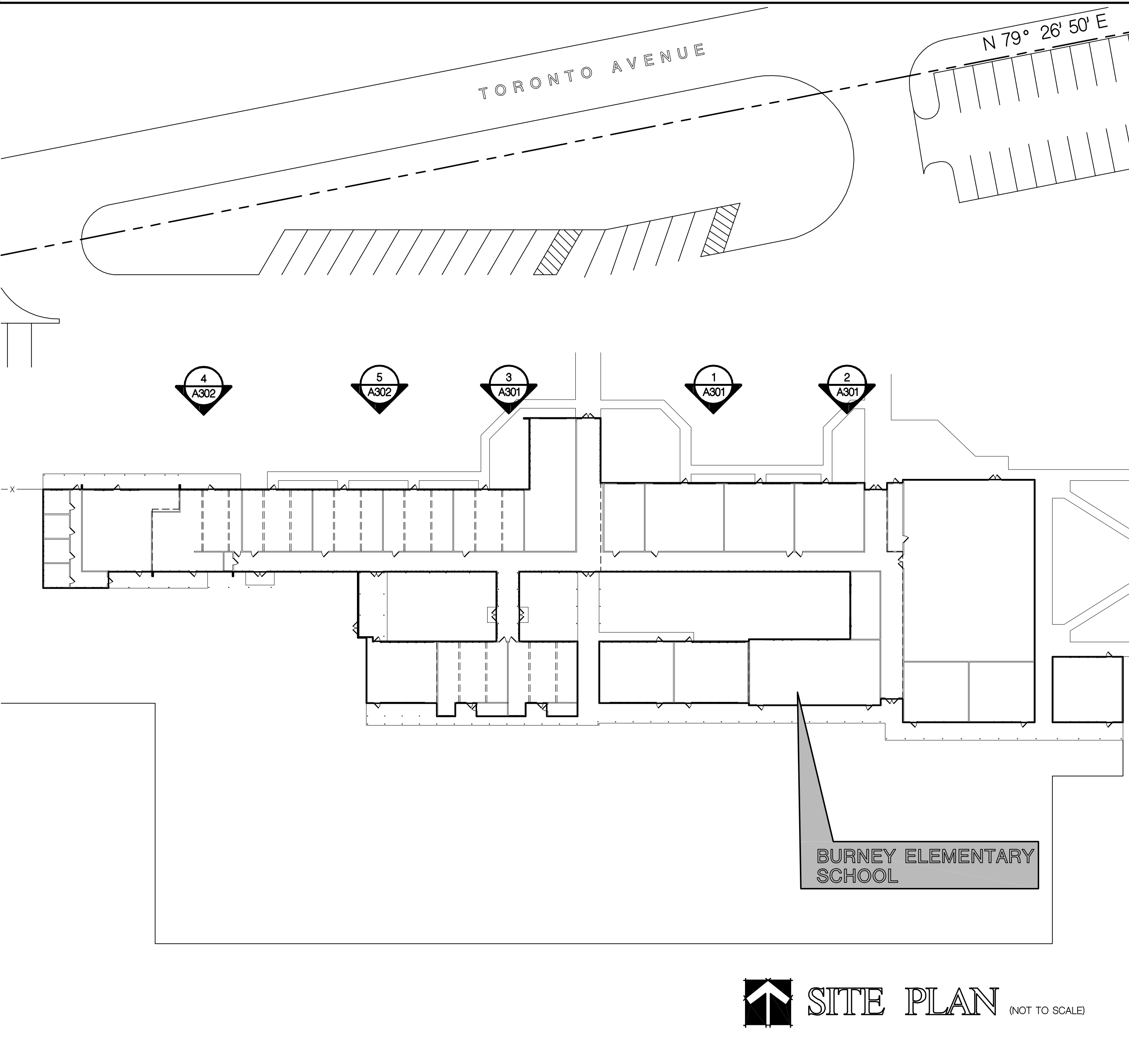
APPLICABLE STANDARDS: ALL WORK PERFORMED & PRODUCTS FURNISHED SHALL COMPLY AS APPLICABLE WITH THE LATEST REGULATIONS OF:

- 2013 NFPA 13 AUTOMATIC SPRINKLER SYSTEMS
- 2013 NFPA 14 STANDPIPE SYSTEMS
- 2013 NFPA 17a WET CHEMICAL SYSTEMS
- 2013 NFPA 20 STATIONARY PUMPS
- 2013 NFPA 24 PRIVATE FIRE MAINS
- 2013 NFPA 72 NATIONAL FIRE ALARM CODE (CALIFORNIA AMENDED)
- 2013 NFPA 253 CRITICAL RADIANT FLUX OF FLOOR COVERING SYSTEMS
- 2013 NFPA 2001 CLEAN AGENT FIRE EXTINGUISHING SYSTEMS
- 2013 NFPA 80 STANDARD FOR FIRE DOORS & OTHER OPENING PROTECTIONS

VICINITY MAP

(NOT TO SCALE)





GENERAL NOTES

- ALL WORK SHALL BE IN ACCORDANCE WITH APPLICABLE ADOPTED ORDINANCES, BUILDING CODES, AND FIRE PREVENTION CODES. REFER TO THE CODE SUMMARY FOR A LIST OF KNOWN APPLICABLE CODES. DISCREPANCIES BETWEEN THESE CODES AND THE CONSTRUCTION DOCUMENTS, IF DISCOVERED, SHALL PROMPTLY BE BROUGHT TO THE ATTENTION OF THE ARCHITECT. THE CONSTRUCTION DOCUMENTS SHALL NOT BE CONSTRUED AS PERMITTING WORK THAT DOES NOT COMPLY WITH APPLICABLE CODES.
- DIMENSIONS ARE TO FACE OF STUDS, CMU, OR SLAB, AND TO CENTERLINES OF STEEL MEMBERS, UNLESS NOTED OTHERWISE. DO NOT SCALE THESE DRAWINGS. DIMENSIONS NOTED AS "CLEAR" (CLR) ARE TAKEN TO THE FACE OF FINISH MATERIALS. VERIFY DIMENSIONS OF PREFABRICATED AND MANUFACTURED ITEMS AND COORDINATE ROUGH OPENINGS ACCORDINGLY.

DRAWING INDEX

A000	TITLE SHEET
A100	WINDOW SCHEDULE
A301	FLOOR PLANS & EXTERIOR ELEVATIONS
A302	FLOOR PLANS & EXTERIOR ELEVATIONS
A700	DETAILS

PROJECT DATA

1 OCCUPANCY GROUP: E
2 CONSTRUCTION TYPE: TYPE V, NON-RATED

LEAD CERTIFICATION

THE CONTRACTOR IS REQUIRED BY THE ENVIRONMENTAL PROTECTION AGENCY TO FOLLOW LEAD-SAFE PRACTICES & THE REQUIREMENTS OF THE EPA'S LEAD-BASED PAINT RENOVATION, REPAIR & PAINTING PROGRAM RULE. THE CONTRACTOR SHALL FURNISH EPA LEAD-BASE REMOVAL CERTIFICATION PRIOR TO BEGINNING WORK.

PROJECT DESCRIPTION

THE PROJECT CONSISTS OF REMOVAL OF EXISTING WOOD & ALUMINUM WINDOWS & REPLACEMENT WITH NEW VINYL CLAD WINDOWS & ASSOCIATED INTERIOR & EXTERIOR WINDOW TRIM.

SYMBOLS

1 A81	DETAIL NUMBER SHEET WHERE DETAIL IS DRAWN	A	WINDOW TYPE
12		12	KEYNOTE

LICENSE STAMPS



PROJECT NAME

A PROPOSED
WINDOW REPLACEMENT
FOR
BURNIEY ELEMENTARY
SCHOOL

FALL RIVER JOINT
UNIFIED SCHOOL DISTRICT
BURNIEY, CALIFORNIA

SHEET TITLE

TITLE SHEET

DRAWING STATUS
CONSTRUCTION
DOCUMENTS
FOR CONSTRUCTION

REVISIONS

Sym.	Description	By	Date

Drawn By	DF
Checked By	WT
Date Drawn	5.6.15
Scale	AS NOTED
Job No.	14-2674.20

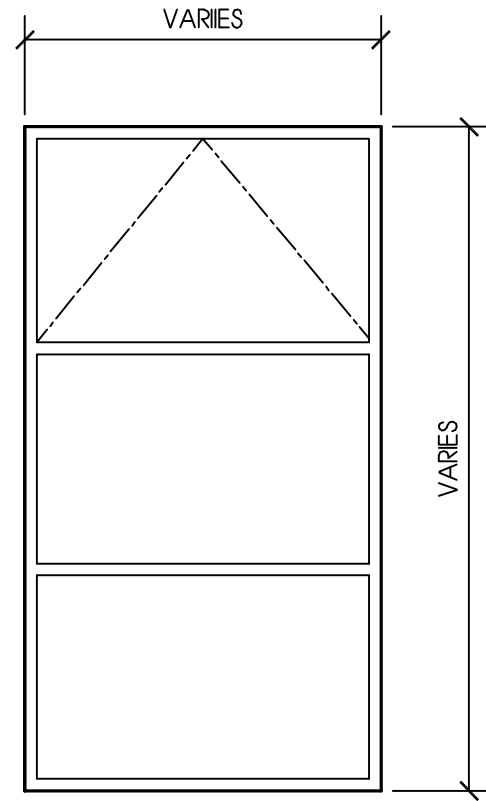
SHEET No.

A000

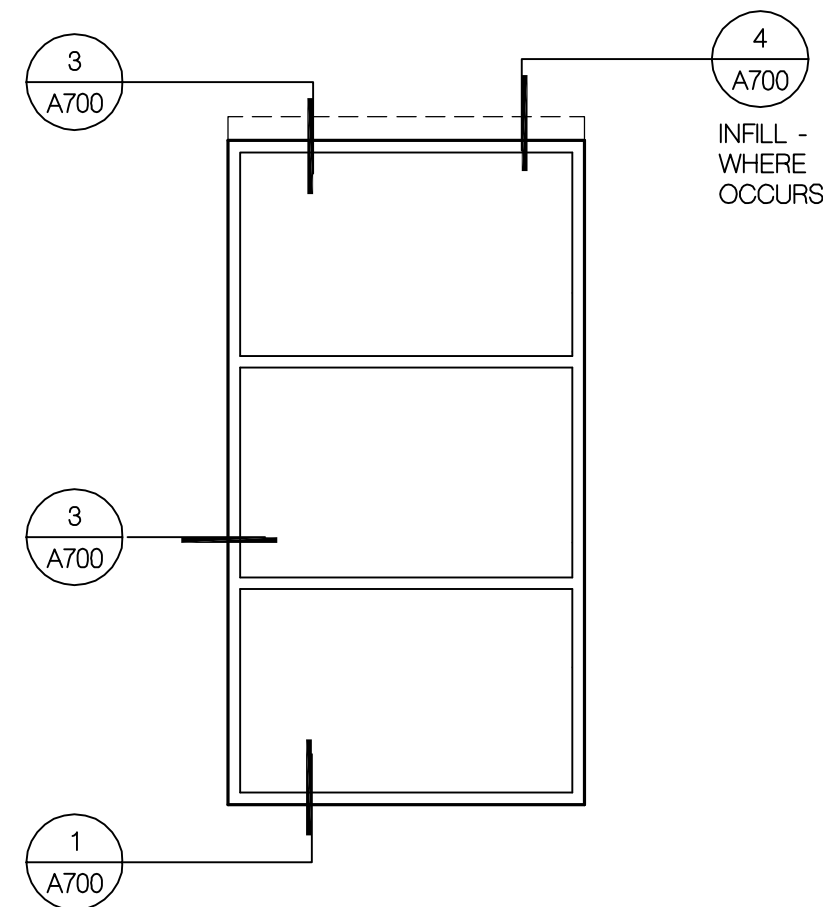
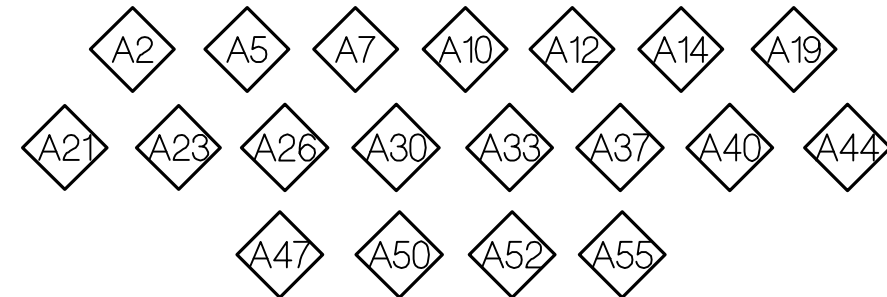
 SITE PLAN (NOT TO SCALE)

LogIn Name: Dean F
 Plot Date: May 07, 2015 - 3:42 pm
 File Name: N:\projects\03000\Education\14-2674-20-1503-Burney-Elementary\03 CAD-Files\Sheets\Phase 1\A000...TTL.dwg
 PLOT: C:\Users\Dean F\AppData\Local\Temp\14-2674-20-1503-Burney-Elementary\03 CAD-Files\Sheets\Phase 1\A000...TTL.dwg

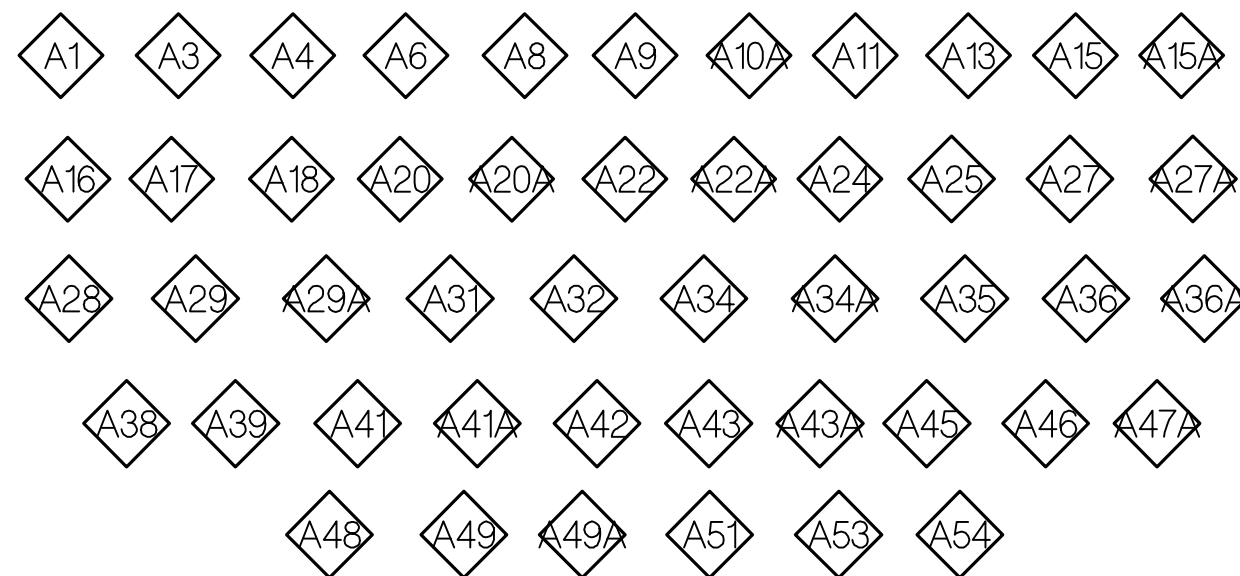
Logon Name: Dean F
 Plot Date: May 07, 2015 - 3:21 pm
 File Name: N:\Projects\000\Education\14_2674_20_FRSD_Burney_Elementary\00 CAD Files\Sheet\Phase 1\SES_A501.rvt.dwg
 PLOTS: X:\117-1\DESIGN\101.PLOT



VINYL OPERABLE



VINYL FIXED



East Burney Elementary
 Window Schedule
 Ordering Information

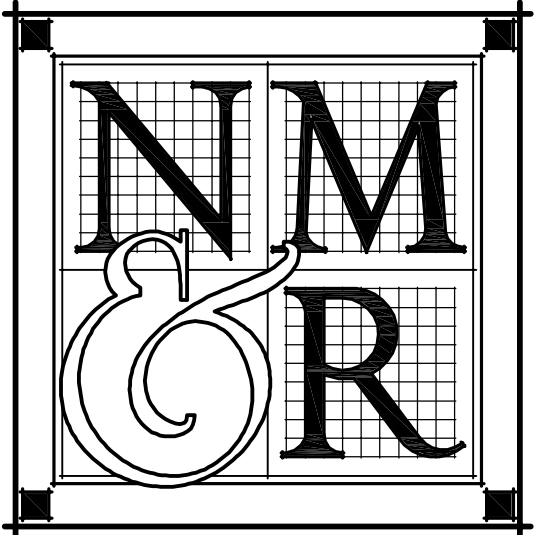
Window Spec
 White Vinyl, PlyGem dual glazed windows
 Low E tinted with option for reflective glazing
 Awning vent in top third of vented windows
 Temper bottom 2 sections of windows adjacent doors

04/15/15

Window Count	Window ID Number	Order Window Width	Order Window Height	Vent	Temp	Window Schedule Symbol	Quantity	Installation Notes	Added Framing or Alterations	Special Notes
1	A1	44-1/4"	79-1/8"			D1	1	Slide new window thru existing interior jamb & trim	N/A	
2	A2	44"	79-1/8"			D2	2	"	"	
3	A3	44"	79-1/8"		X	D3	1	"	"	Temper bottom 2 sections of window
36" door with transom										
4	A4	44-1/4"	79-1/8"		X	E4	1	"	"	Temper bottom 2 sections of window
5	A5	44"	79-1/8"			D2	2	"	"	
6	A6	44-1/8"	79-3/8"			D5	2	Slide new window thru existing interior jamb & trim	N/A	
7	A7	44-1/8"	79-3/8"		X	E6	2	"	"	
8	A8	44-1/8"	79-3/8"		X	D7	1	"	"	Temper bottom 2 sections of window
36" door with transom										
9	A9	44"	79-3/8"		X	D8	1	"	"	Temper bottom 2 sections of window
10	A10	44-1/8"	79-3/8"		X	E6	2	"	"	
11	A10A	44-1/8"	79-3/8"			D5	2	"	"	
12	A11	44"	79-1/4"			D9	2	Slide new window thru existing interior jamb & trim	N/A	
13	A12	44"	79-1/4"		X	E10	1	"	"	
14	A13	44"	79-1/4"		X	D11	1	"	"	Temper bottom 2 sections of window
36" door with transom										
15	A14	44-1/4"	79-1/4"		X	E12	1	"	"	Temper bottom 2 sections of window
16	A15	44-1/4"	79-1/4"			D13	1	"	"	
17	A15A	44"	79-1/4"			D9	2	"	"	
18	A16	44"	79-3/8"			D14	1	Slide new window thru existing interior jamb & trim	N/A	
19	A17	44"	79-3/8"		X	E15	1	"	"	
Add Two 2X's to head of all openings on west elevation of phase 1 except 52 - 55 Window openings interrupted by column, add 2x trimmer on each side, add posts to create even width spaces										
20	A18	34-1/8"	79-7/8"			D16	2	Slide new window thru created opening & trim	Opening determined by equal division of RO	
21	A19	34-1/8"	79-7/8"		X	E17	1	"	"	
22	A20	34-1/8"	79-7/8"			D16	2	"	"	
Window openings interrupted by column, add 2x trimmer on each side, add post to create even width spaces										
23	A20A	31-1/2"	79-7/8"			D18	1	Slide new window thru created opening & trim	Opening determined by equal division of RO	
24	A21	31-1/2"	79-7/8"		X	E19	1	"	"	Temper window adjacent door
36" door with transom										
25	A22	17"	79-7/8"		X	D20	2	Slide new window thru created opening & trim	Opening created by column in window plane	Temper window adjacent door
Window openings interrupted by column, add 2x trimmer on each side, add post to create even width spaces										
26	A22A	32-3/4"	79-7/8"			D21	2	Slide new window thru created opening & trim	Opening determined by equal division of RO	
27	A23	32-3/4"	79-7/8"		X	E22	1	"	"	
28	A24	32-3/4"	79-7/8"			D21	2	"	"	
29	A25	33-1/2"	80-1/4"			D23	2	Slide new window thru created opening & trim	"	
30	A26	33-1/2"	80-1/4"		X	E24	1	"	"	
31	A27	33-1/2"	80-1/4"			D23	2	"	"	Window added by division of RO space
Window openings interrupted by column, add 2x trimmer on each side, add post to create even width spaces										
32	A27A	30-3/4"	79-7/8"			D25	2	Slide new window thru created opening & trim	Opening determined by equal division of RO	
33	A28	30-3/4"	79-7/8"		X	D26	2	"	"	Temper window adjacent door
36" door with transom										
34	A29	16-3/4"	79-7/8"		X	D27	1	Slide new window thru created opening & trim	Opening created by column in window plane	Temper window adjacent door
Window openings interrupted by column, add 2x trimmer on each side, add post to create even width spaces										
35	A29A	29-5/8"	79-7/8"			D28	2	Slide new window thru created opening & trim	Opening determined by equal division of RO	
36	A30	29-5/8"	79-7/8"		X	E29	1	"	"	
37	A31	29-5/8"	79-7/8"			D28	2	"	"	
38	A32	33-1/8"	79-7/8"			D30	2	Slide new window thru created opening & trim	Opening determined by equal division of RO	
39	A33	33-1/8"	79-7/8"		X	E31	1	"	"	
40	A34	33-1/8"	79-7/8"			D30	2	"	"	
Window openings interrupted by column, add 2x trimmer on each side, add post to create even width spaces										
41	A34A	30-3/4"	79-7/8"			D25	2	Slide new window thru created opening & trim	Opening determined by equal division of RO	
42	A35	30-3/4"	79-7/8"		X	E26	1	"	"	Temper window adjacent door
36" door with transom										
43	A36	17"	79-7/8"		X	E20	2	Slide new window thru created opening & trim	Opening created by column in window plane	Temper window adjacent door
Window openings interrupted by column, add 2x trimmer on each side, add post to create even width spaces										
Add Two 2X's to head of all openings on west elevation of phase 1 except 52 - 55 Window openings interrupted by column, add 2x trimmer on each side, add post to create even width spaces										
44	A36A	33-3/4"	79-7/8"			D32	2	Slide new window thru created opening & trim	Window added by division of RO space	Opening determined by equal division of RO
45	A37	33-3/4"	79-7/8"		X	D33	1	"	"	
46	A38	33-3/4"	79-7/8"			D32	2	"	"	
47	A39	33-1/8"	79-7/8"			D30	2	Slide new window thru created opening & trim	Opening determined by equal division of RO	
48	A40	33-1/8"	79-7/8"		X	E31	1	"	"	
49	A41	33-1/8"	79-7/8"			D30	2	"	"	
Window openings interrupted by column, add 2x trimmer on each side, add post to create even width spaces										
50	A41A	30-5/8"	79-7/8"			D34	1	Slide new window thru created opening & trim	Window added by division of RO space	
51	A42	30-5/8"	79-7/8"		X	E35	1	"	"	Opening determined by equal division of RO
36" door with transom										
52	A43	16-3/4"	79-7/8"		X	E36	1	Slide new window thru created opening & trim	Opening created by column in window plane	Temper window adjacent door
Window openings interrupted by column, add 2x trimmer on each side, add post to create even width spaces										
53	A43A	33-7/8"	79-7/8"			D37	2	Slide new window thru created opening & trim	Window added by division of RO space	Openings determined by equal division of RO
54	A44	33-7/8"	79-7/8"		X	E38	1	"	"	
55	A45	33-7/8"	79-7/8"			D37	2	"	"	
56	A46	37"	79-7/8"			D39	2	Slide new window thru created opening & trim	Opening determined by equal division of RO	
57	A47	37"	79-7/8"			D39	2	"	"	
Window openings interrupted by column, add 2x trimmer on each side, add post to create even width spaces										
58	A47A	29-5/8"	79-7/8"		X	D40	1	Slide new window thru created opening & trim	Opening determined by equal division of RO	
59	A48	29-5/8"	79-7/8"		X	E41	1	"	"	Temper window adjacent door
36" door with transom										
60	A49	14-5/8"	79-7/8"		X	E42	1	Slide new window thru created opening & trim	Opening created by column in window plane	Temper window adjacent door
Window openings interrupted by column, add 2x trimmer on each side, add post to create even width spaces										
61	A49A	34-1/2"	79-7/8"			D43	2	Slide new window thru created opening & trim	Opening determined by equal division of RO	
62	A50	34-1/2"	79-7/8"		X	D44	1	"	"	
63	A51	34-1/2"	79-7/8"			D43	2	"	"	
No added 2x at top of openings 52 thru 55										
64	A52	44"	79-1/2"		X	E45	2	Slide new window thru existing jamb opening & trim	"	
65	A53	44"	79-1/2"		X	D46	2	Slide new window thru existing jamb opening & trim	"	Temper window adjacent door
36" door with transom										
66	A54	44"	79-1/2"		X	D46	2	Slide new window thru existing jamb opening & trim	"	Temper window adjacent door
67	A55	44"	79-1/2"		X	E45	2	Slide new window thru existing jamb opening & trim	"	
67	Total Windows					Total	67			

Copyright © 2015

All ideas, designs, arrangements and plans indicated or represented by this drawing are created by and the property of NICHOLS MELBURG and ROSSETTO and were created, evolved and developed for use on, and in conjunction with, the specified project. None of such ideas, designs, arrangements or plans shall be used by, or disclosed to any person, firm or corporation for any purpose whatsoever without the written permission of NICHOLS MELBURG and ROSSETTO.



NICHOLS
 MELBURG
 ROSSETTO
 ARCHITECTS + ENGINEERS
 300 KNOLLCREST DRIVE
 REDDING, CA 96002
 (530) 222-3300 (530) 222-3538 FAX
 http://www.nmrdesign.com

CONSULTANTS

LICENSE STAMPS



PROJECT NAME

A PROPOSED
 WINDOW REPLACEMENT
 FOR
 BURNLEY
 ELEMENTARY
 SCHOOL

FALL RIVER JOINT
 UNIFIED SCHOOL DISTRICT
 BURNLEY, CALIFORNIA

SHEET TITLE

WINDOW TYPES

DRAWING STATUS
 CONSTRUCTION
 DOCUMENTS
 FOR CONSTRUCTION

REVISIONS

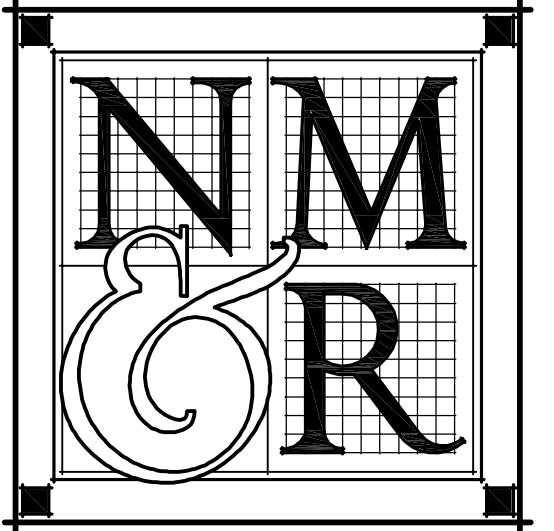
Sym.	Description	By	Date

Drawn By	DF
Checked By	
Date Drawn	5.6.15
Scale	AS NOTED
Job No.	14-2674.20

SHEET No.

A100

Copyright © 2015
 All ideas, designs, arrangements and plans indicated or represented by this drawing are created by and the property of NICHOLS MELBURG and ROSSETTO and were created, evolved and developed for use on, and in conjunction with, the specified project. None of such ideas, designs, arrangements or plans shall be used by, or disclosed to any person, firm or corporation for any purpose whatsoever without the written permission of NICHOLS MELBURG and ROSSETTO.



**NICHOLS
 MELBURG
 &
 ROSSETTO**
 ARCHITECTS + ENGINEERS
 300 KNOLLCREST DRIVE
 REDDING, CA 96002
 (530) 222-3300 (530) 222-3538 FAX
<http://www.nmrdesign.com>

CONSULTANTS

LICENSE STAMPS



PROJECT NAME
**A PROPOSED
 WINDOW REPLACEMENT
 FOR
 BURNEY
 ELEMENTARY
 SCHOOL**
**FALL RIVER JOINT
 UNIFIED SCHOOL DISTRICT
 BURNEY, CALIFORNIA**

SHEET TITLE

DETAILS

DRAWING STATUS
**CONSTRUCTION
 DOCUMENTS**
 FOR CONSTRUCTION

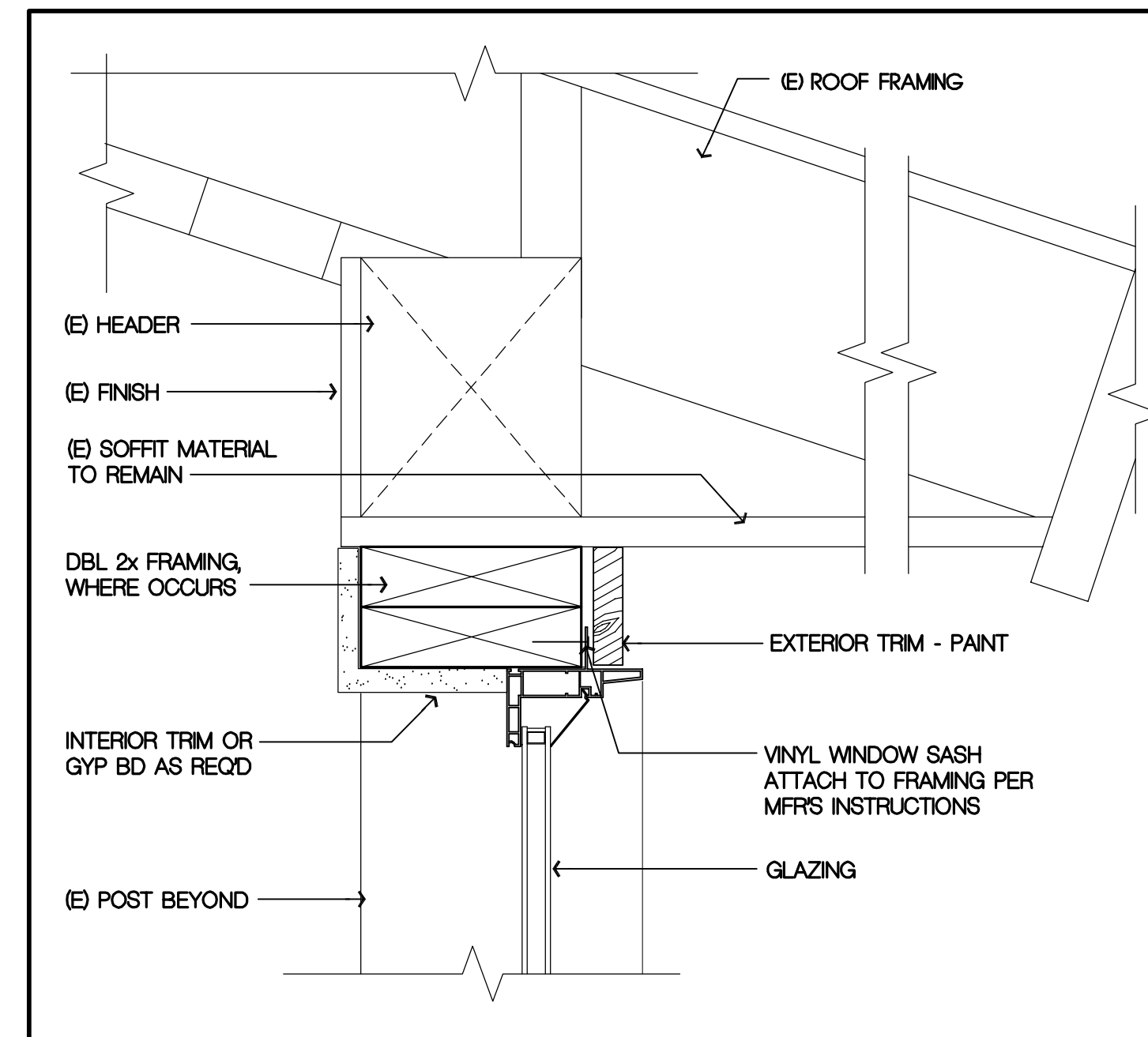
REVISIONS

Sym.	Description	By	Date

Drawn By	NMR
Checked By	
Date Drawn	5.6.15
Scale	AS NOTED
Job No.	14-2674.20

SHEET No.

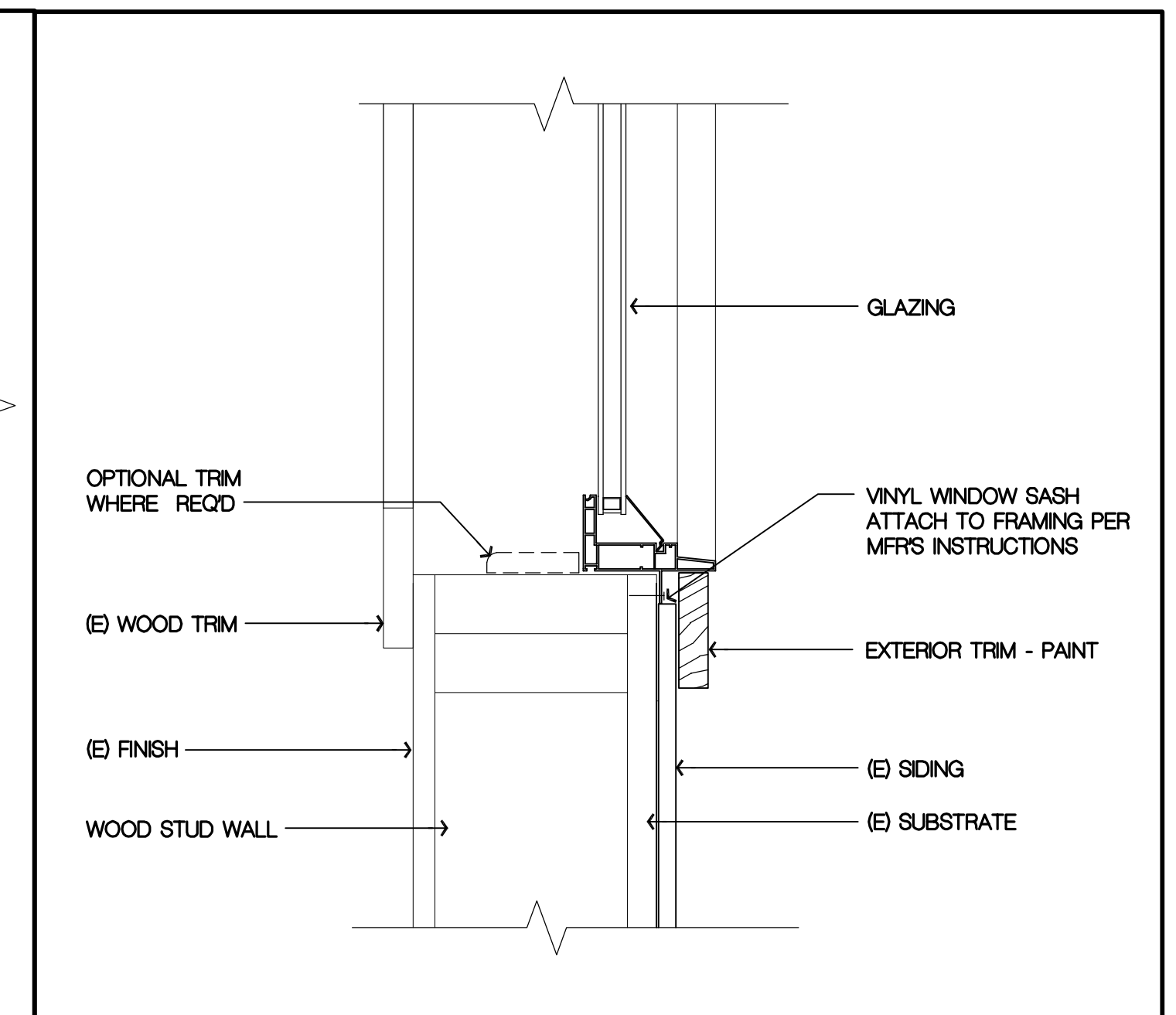
A700



**WINDOW HEAD AT
 FURRED FRAMING**

SCALE: 3" = 1'-0"

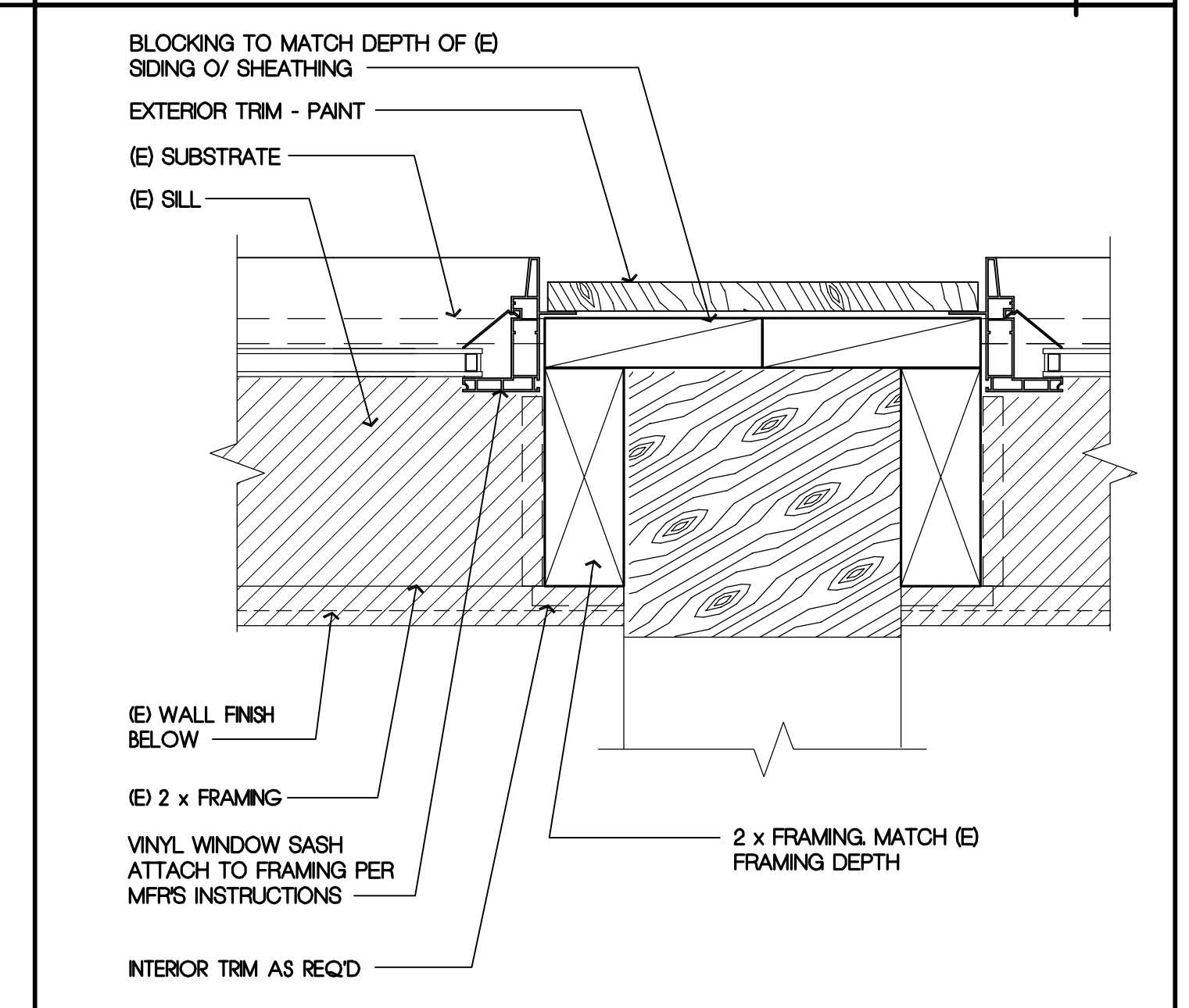
4



WINDOW SILL

SCALE: 3" = 1'-0"

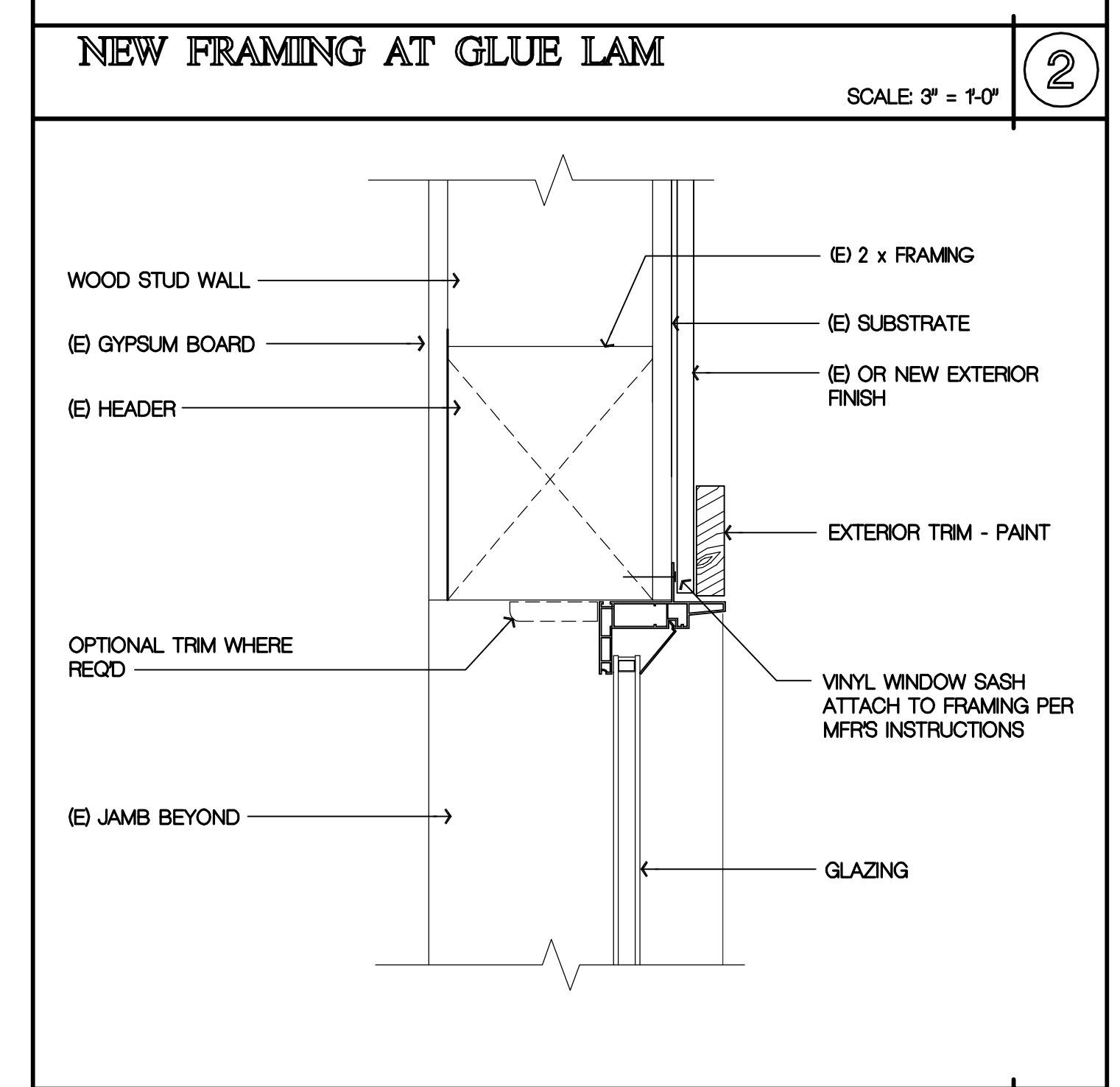
1



NEW FRAMING AT GLUE LAM

SCALE: 3" = 1'-0"

2



**WINDOW HEAD
 JAMB SIM.**

SCALE: 3" = 1'-0"

3

Logn Name: Dean F
 Plot Date: May 07, 2015 - 2:01 pm
 File Name: N:\Projects\000\Education\14-2674.20 FRSD Burney Elementary\03 CAD Files\Sheet\Phase 1\SES A700 Detailing
 PERS_L_14-2674.20 FRSD Burney Elementary.dwg - second phase - L:\NICHOLS\c-eeing\training - L:\nrm at 9:41 am - L:\NICHONS\HEAD w\frmg