

A WINDOW REPLACEMENT FOR BURNEY ELEMENTARY SCHOOL

37403 Toronto Street, Burney, California

Copyright © 2015
All ideas, designs, arrangements and plans indicated or represented by this drawing are owned by, and the property of, NICHOLS, MELBURG & ROSSETTO and were created, evolved and developed for use on, and in conjunction with, the specified project. None of such ideas, designs, arrangements or plans shall be used by, or disclosed to any person, firm or corporation for any purpose whatsoever without the written permission of NICHOLS, MELBURG & ROSSETTO.

**NICHOLS
MELBURG
ROSSETTO**
ARCHITECTS + ENGINEERS
300 KNOLLCREST DRIVE
REDDING, CA 96002
(530) 222-3300 (530) 222-3538 FAX
http://www.nmrdesign.com

CONSULTANTS

APPLICABLE CODES

APPLICABLE CODES: ALL WORK PERFORMED & PRODUCTS FURNISHED SHALL COMPLY AS APPLICABLE WITH THE LATEST REGULATIONS OF:

- 2013 BUILDING STANDARDS ADMINISTRATIVE CODE, PART 1, TITLE 24 C.C.R.
- 2013 CALIFORNIA BUILDING CODE (CBC), PART 2, TITLE 24 C.C.R.
(2012 INTERNATIONAL BUILDING CODE VOLUMES 1-2 AND 2013 CALIFORNIA AMENDMENTS)
- 2013 CALIFORNIA ELECTRICAL CODE (CEC), PART 3, TITLE 24 C.C.R.
(2011 NATIONAL ELECTRICAL CODE AND 2013 CALIFORNIA AMENDMENTS)
- 2013 CALIFORNIA MECHANICAL CODE (CMC), PART 4, TITLE 24 C.C.R.
(2012 UNIFORM MECHANICAL CODE AND 2013 CALIFORNIA AMENDMENTS)
- 2013 CALIFORNIA PLUMBING CODE (CPC), PART 5, TITLE 24 C.C.R.
(2012 PLUMBING CODE AND 2013 CALIFORNIA AMENDMENTS)
- 2013 CALIFORNIA ENERGY CODE, PART 6, TITLE 24 C.C.R.
- 2013 CALIFORNIA FIRE CODE, PART 9, TITLE 24 C.C.R.
(2012 INTERNATIONAL FIRE CODE AND 2013 CALIFORNIA AMENDMENTS)
- 2013 CALIFORNIA EXISTING BUILDING CODE, PART 10, TITLE 24 C.C.R.
(2012 INTERNATIONAL EXISTING BUILDING CODE AND 2013 CALIFORNIA AMENDMENTS)
- 2013 CALIFORNIA "GREEN" BUILDING STANDARDS CODE, PART 11, TITLE 24 C.C.R.
- 2013 CALIFORNIA REFERENCED STANDARDS, PART 12, TITLE 24 C.C.R.
- TITLE 8 C.C.R., CHAPTER 4, SUB-CHAPTER 6-ELEVATOR SAFETY ORDERS
- TITLE 19 C.C.R., PUBLIC SAFETY, STATE FIRE MARSHAL REGULATIONS

APPLICABLE STANDARDS: ALL WORK PERFORMED & PRODUCTS FURNISHED SHALL COMPLY AS APPLICABLE WITH THE LATEST REGULATIONS OF:

- 2013 NFPA 13 AUTOMATIC SPRINKLER SYSTEMS
- 2013 NFPA 14 STANDPIPE SYSTEMS
- 2013 NFPA 17a WET CHEMICAL SYSTEMS
- 2013 NFPA 20 STATIONARY PUMPS
- 2013 NFPA 24 PRIVATE FIRE MAINS
- 2013 NFPA 72 NATIONAL FIRE ALARM CODE (CALIFORNIA AMENDED)
- 2013 NFPA 283 CRITICAL RADIANT FLUX OF FLOOR COVERING SYSTEMS
- 2013 NFPA 2001 CLEAN AGENT FIRE EXTINGUISHING SYSTEMS
- 2013 NFPA 80 STANDARD FOR FIRE DOORS & OTHER OPENING PROTECTIONS

VICINITY MAP (NOT TO SCALE)

BURNEY ELEMENTARY SCHOOL

SITE PLAN (NOT TO SCALE)

GENERAL NOTES

- ALL WORK SHALL BE IN ACCORDANCE WITH APPLICABLE ADOPTED ORDINANCES, BUILDING CODES, AND FIRE PREVENTION CODES. REFER TO THE CODE SUMMARY FOR A LIST OF KNOWN APPLICABLE CODES. DISCREPANCIES BETWEEN THESE CODES AND THE CONSTRUCTION DOCUMENTS, IF DISCOVERED, SHALL PROMPTLY BE BROUGHT TO THE ATTENTION OF THE ARCHITECT. THE CONSTRUCTION DOCUMENTS SHALL NOT BE CONSTRUED AS PERMITTING WORK THAT DOES NOT COMPLY WITH APPLICABLE CODES.
- DIMENSIONS ARE TO FACE OF STUDS, CMU, OR SLAB, AND TO CENTERLINES OF STEEL MEMBERS, UNLESS NOTED OTHERWISE. DO NOT SCALE THESE DRAWINGS. DIMENSIONS NOTED AS "CLEAR" (CLR) ARE TAKEN TO THE FACE OF FINISH MATERIALS. VERIFY DIMENSIONS OF PREFABRICATED AND MANUFACTURED ITEMS AND COORDINATE ROUGH OPENINGS ACCORDINGLY.

DRAWING INDEX

A000	TITLE SHEET
A100	WINDOW SCHEDULE
A304	REFERENCE FLOOR PLANS & EXTERIOR ELEVATIONS
A305	REFERENCE FLOOR PLANS & EXTERIOR ELEVATIONS
A700	DETAILS

PROJECT DATA

1 OCCUPANCY GROUP: E
2 CONSTRUCTION TYPE: TYPE V, NON-RATED

LEAD CERTIFICATION

THE CONTRACTOR IS REQUIRED BY THE ENVIRONMENTAL PROTECTION AGENCY TO FOLLOW LEAD-SAFE PRACTICES & THE REQUIREMENTS OF THE EPA'S LEAD-BASED PAINT RENOVATION, REPAIR & PAINTING PROGRAM RULE. THE CONTRACTOR SHALL FURNISH EPA LEAD-BASE REMOVAL CERTIFICATION PRIOR TO BEGINNING WORK.

PROJECT DESCRIPTION

THE PROJECT CONSISTS OF REMOVAL OF EXISTING WOOD & ALUMINUM WINDOWS & REPLACEMENT WITH NEW VINYL CLAD WINDOWS & ASSOCIATED INTERIOR & EXTERIOR WINDOW TRIM.

SYMBOLS

1 A81	DETAIL NUMBER SHEET WHERE DETAIL IS DRAWN	A	WINDOW TYPE
12	KEYNOTE		

LICENSE STAMPS

PROJECT NAME

A PROPOSED WINDOW REPLACEMENT FOR BURNEY ELEMENTARY SCHOOL

FALL RIVER JOINT UNIFIED SCHOOL DISTRICT BURNEY, CALIFORNIA

SHEET TITLE

TITLE SHEET

DRAWING STATUS

3

REVISIONS

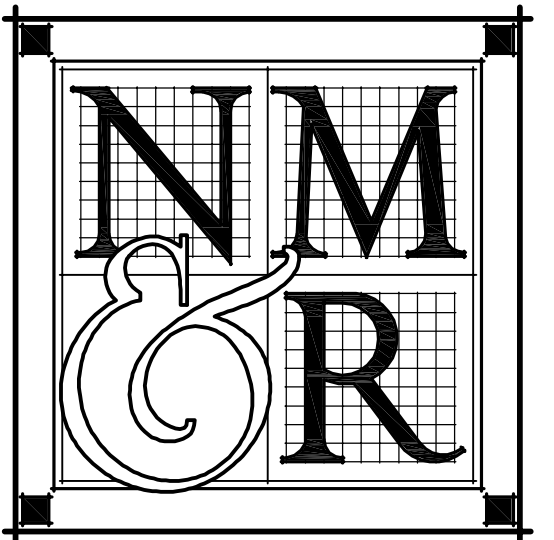
Sym.	Description	By	Date

Drawn By	DF
Checked By	WT
Date Drawn	5.6.15
Scale	AS NOTED
Job No.	14-2674.20

SHEET No.

A000

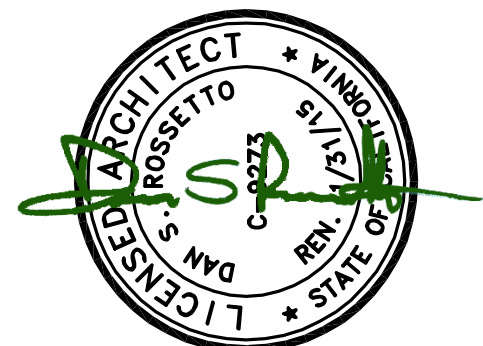
LogIn Name: Dean F
 Plot Date: May 07, 2015 - 4:03 pm
 File Name: N:\projects\030003\Education\14-2674-20-FRISQ Burney Elementary\03 CAD Files\Sheet\Phase II\A000...TITLE.dwg
 PLOT: C:\Users\Dean F\AppData\Local\Temp\14-2674-20-FRISQ Burney Elementary\03 CAD Files\Sheet\Phase II\A000...TITLE.dwg



NICHOLS MELBURG ROSSETTO ARCHITECTS + ENGINEERS
 300 KNOLLCREST DRIVE
 REDDING, CA 96002
 (530) 222-3300 (530) 222-3538 FAX
 http://www.nmrdesign.com

CONSULTANTS

LICENSE STAMPS



PROJECT NAME
A PROPOSED WINDOW REPLACEMENT FOR BURNLEY ELEMENTARY SCHOOL

FALL RIVER JOINT UNIFIED SCHOOL DISTRICT
 BURNLEY, CALIFORNIA

SHEET TITLE

WINDOW TYPES

DRAWING STATUS

3

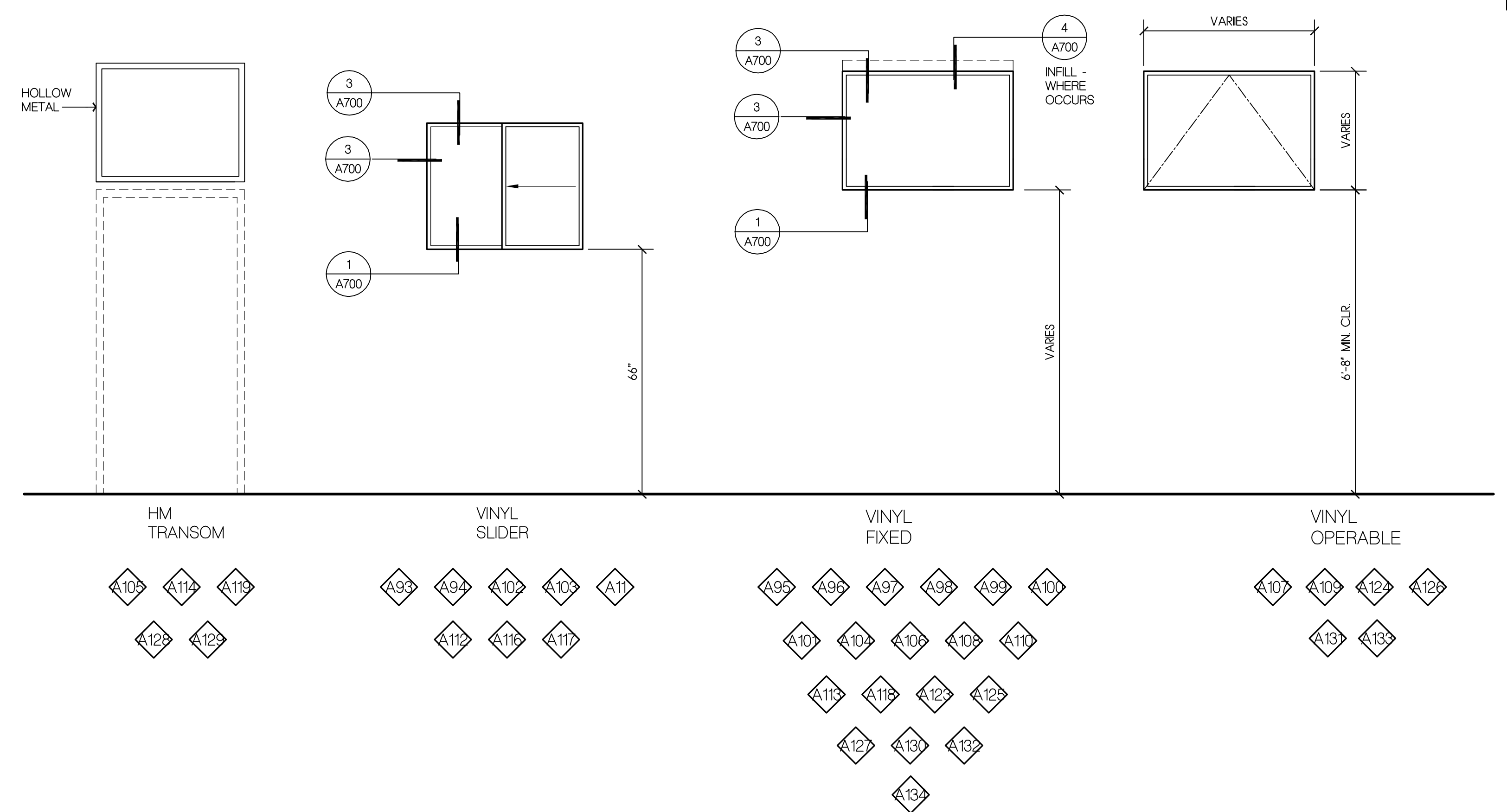
REVISIONS

Sym.	Description	By	Date

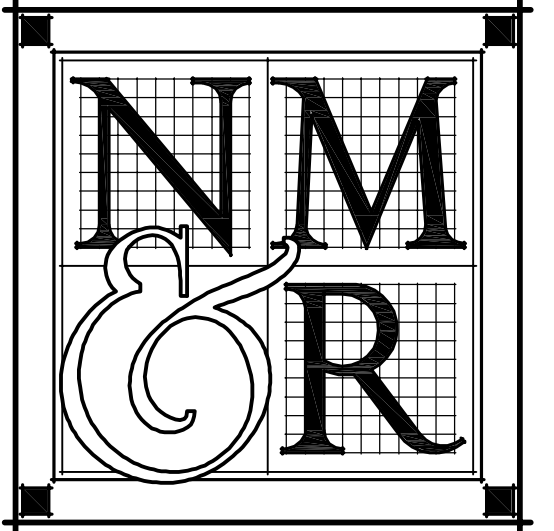
Drawn By	DF
Checked By	
Date Drawn	5.6.15
Scale	AS NOTED
Job No.	14-2674.20

SHEET No.

A100



East Burnley Elementary Window Schedule								Window Spec Information		
Window Count	Window Opening Number	Order Window Width	Order Window Height	Vent	Temp	Window Schedule Symbol	Quantity	Installation Notes	Added Framing or Alterations	Special Notes
1	A93	43-7/8"	30-7/8"	X		G69	2	Slide new window thru existing interior finishes	Polyseamseal to tile and/or trim to painted finishes	XO Slider, obscure glazing
2	A94	43-7/8"	30-7/8"	X		G69		Slide new window thru existing interior finishes	Polyseamseal to tile and/or trim to painted finishes	XO Slider, obscure glazing
3	A95	43-7/8"	30-3/4"		X	F70	1	Slide new window thru existing interior finishes	Trim or caulk to existing finishes	Temp window adjacent to door
36" door										
4	A96	44-1/8"	31-5/8"		X	F71	1	Slide new window thru existing interior finishes	Trim or caulk to existing finishes	
Add Two 2X's to head of Phase 3 openings A97 thru A101										
5	A97	137-3/4"	38-3/4"		X	F72	1	Slide new window thru created opening & trim	Openings A97, A98 & A99 become common opening	2 vertical mullions to create 3 equal sections
	A98									
	A99									
6	A100	43-1/4"	38-5/8"		X	F73	1	Slide new window thru created opening & trim		Temp window adjacent to door
36" door										
7	A101	41-1/4"	38-1/4"		X	F7	1	Slide new window thru created opening & trim		
8	A102	39-3/8"	25-1/8"	X		G75	1	Slide new window thru existing interior finishes	Polyseamseal to tile and/or trim to painted finishes	XO Slider, obscure glazing & check temper
9	A103	40-1/8"	25-1/8"	X		G76	1	Slide new window thru existing interior finishes	Polyseamseal to tile and/or trim to painted finishes	XO Slider, obscure glazing & check temper
10	A104	39-1/2"	25-1/2"			F77	1	Slide new window thru created opening & trim		
Add One 2X to head of Phase 3 transom openings A105, A114, A119, 128 & 129										
	A105	40"	29-3/4"					Transom over door to be hollow metal frame	7-1/4" throat, check glazing color of door & windows	Replacement trim will need to be resized
11	A106	44"	30-3/4"			F78	3	Slide new window thru existing finishes & trim		
12	A107	44"	30-3/4"	X		I79	2	"		
13	A108	44"	30-3/4"			F78		"		
14	A109	44"	30-3/4"	X		I79		"		
15	A110	44"	30-3/4"			F78		"		
16	A111	39-1/2"	30-1/4"	X		G80	2	Slide new window thru existing interior finishes	Polyseamseal to tile and/or trim to painted finishes	XO Slider, obscure glazing
17	A112	39-1/2"	30-1/4"	X		G80		Slide new window thru existing interior finishes	Polyseamseal to tile and/or trim to painted finishes	XO Slider, obscure glazing
	A113							Fill opening with studs, insulate, side & trim for paint		
	A114	40"	29-3/4"					Transom over door to be hollow metal frame	7-1/4" throat, check glazing color of door & windows	Replacement trim will need to be resized
	A115							Fill opening with studs, insulate, side & trim for paint	Cut frame after glazing is removed and infill	
18	A116	38-7/8"	31"	X		G81	2	Slide new window thru existing interior finishes	Polyseamseal to tile and/or trim to painted finishes	XO Slider, obscure glazing & check temper
19	A117	38-7/8"	31"	X		G81		Slide new window thru existing interior finishes	Polyseamseal to tile and/or trim to painted finishes	XO Slider, obscure glazing & check temper
	A1118							Fill opening with studs, insulate, side & trim for paint		
	A119	40"	29-3/4"					Transom over door to be hollow metal frame	7-1/4" throat, check glazing color of door & windows	Replacement trim will need to be resized
	A120							Fill opening with studs, insulate, side & trim for paint	Cut frame after glazing is removed and infill	
20	A123	43-7/8"	30-1/4"			F82	3	Slide new window thru existing finishes & trim		Check hopper availability for vinyl windows
21	A124	43-7/8"	30-1/4"	X		I83	2	"		"
22	A125	43-7/8"	30-1/4"			F82		"		"
23	A126	43-7/8"	30-1/4"	X		I83		"		"
24	A127	43-7/8"	30-1/4"			F82		"		"
	A128	40"	29-3/4"					Transom over door to be hollow metal frame	6-3/4" throat, check glazing color of door & windows	Replacement trim will need to be resized
	A129	40"	29-3/4"					Transom over door to be hollow metal frame	6-3/4" throat, check glazing color of door & windows	Replacement trim will need to be resized
25	A130	44"	30-1/2"			F84	3	Slide new window thru existing finishes & trim		Check hopper availability for vinyl windows
26	A131	44"	30-1/2"	X		I85	2	"		"
27	A132	44"	30-1/2"			F84		"		"
28	A133	44"	30-1/2"	X		I85		"		"
29	A134	44"	30-1/2"			F84		"		"
29	Total Windows						Total	29		



**NICHOLS
 MELBURG
 ROSSETTO**
 ARCHITECTS + ENGINEERS
 300 KNOLLCREST DRIVE
 REDDING, CA 96002
 (530) 222-3300 (530) 222-3538 FAX
<http://www.nmrdesign.com>

CONSULTANTS

LICENSE STAMPS



PROJECT NAME
**A PROPOSED
 WINDOW REPLACEMENT
 FOR
 BURNEY
 ELEMENTARY
 SCHOOL**

FALL RIVER JOINT
 UNIFIED SCHOOL DISTRICT
 BURNEY, CALIFORNIA

SHEET TITLE

DETAILS

DRAWING STATUS

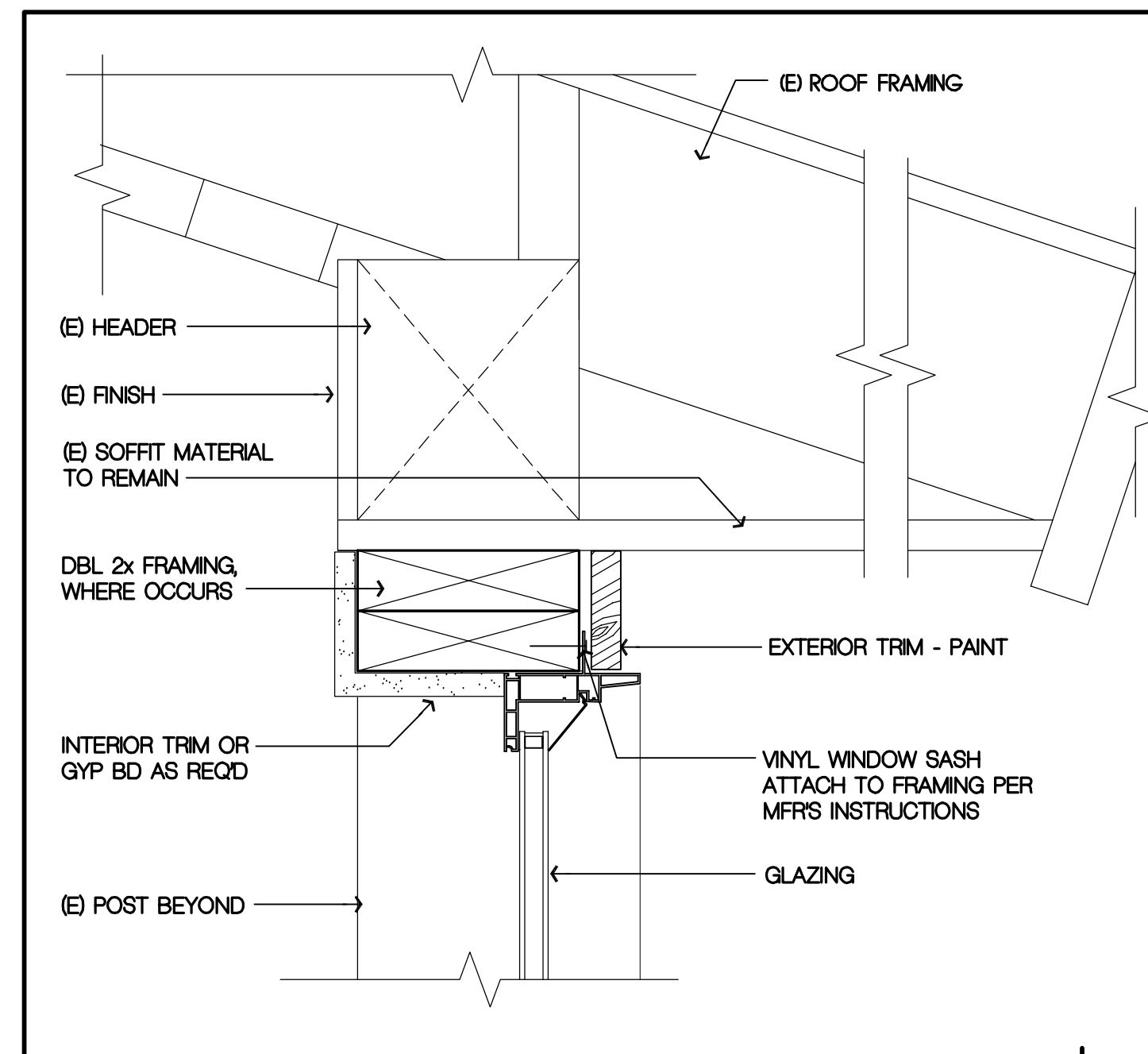
REVISIONS

Sym.	Description	By	Date

Drawn By	NMR
Checked By	
Date Drawn	5.8.15
Scale	AS NOTED
Job No.	14-2674.20

SHEET No.

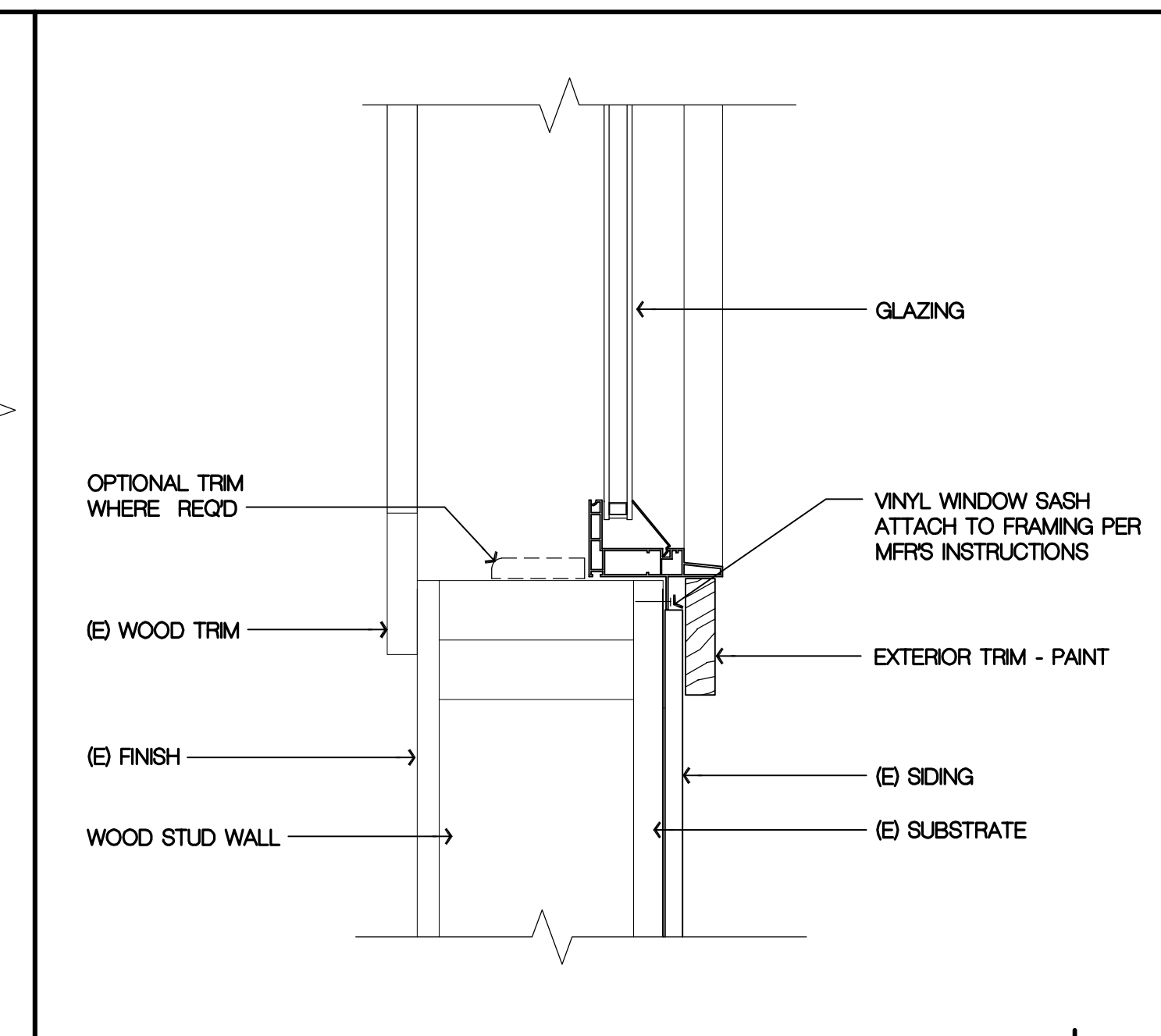
A700



**WINDOW HEAD AT
 FURRED FRAMING**

SCALE: 3" = 1'-0"

4

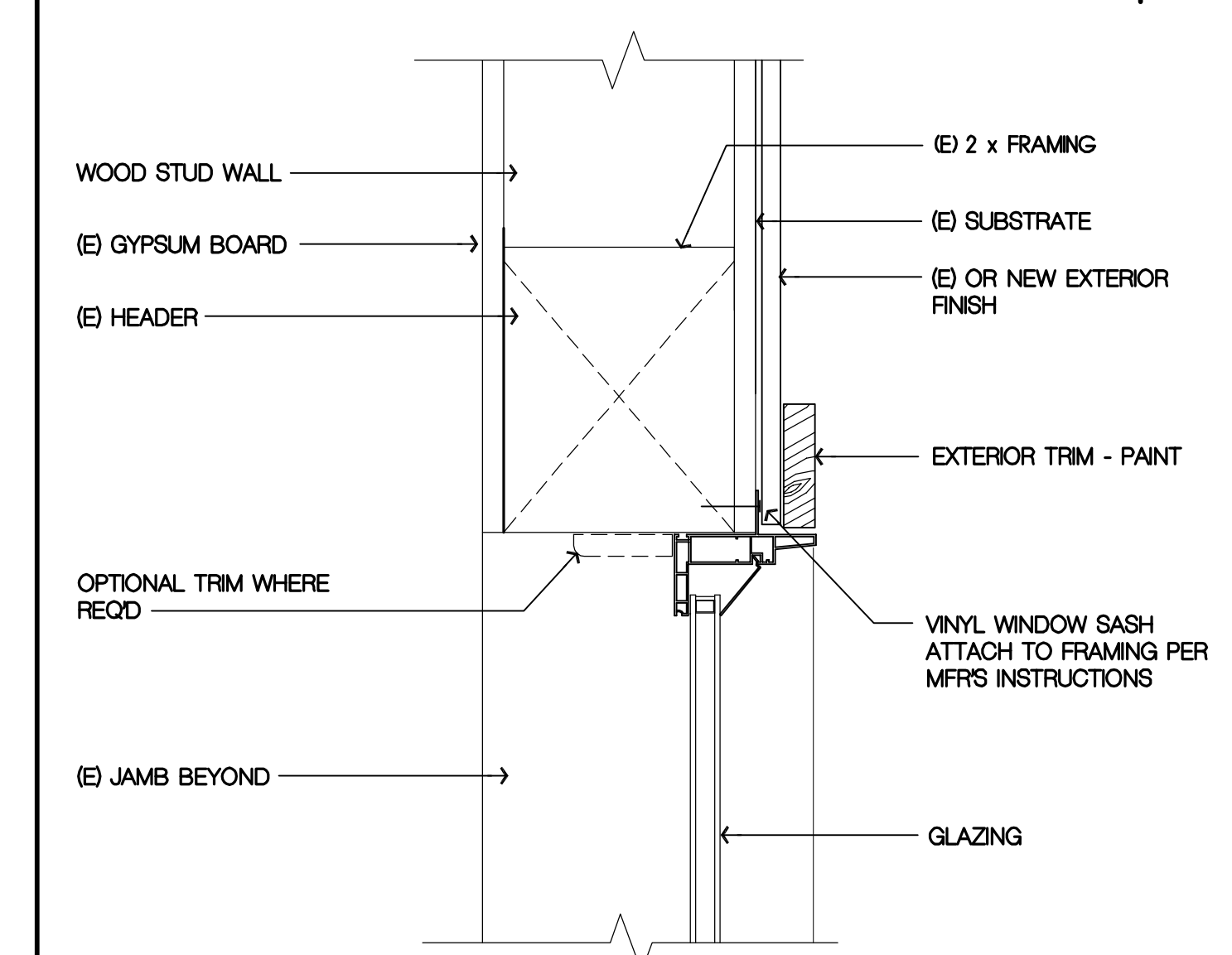


WINDOW SILL

SCALE: 3" = 1'-0"

1

NOT USED



**WINDOW HEAD
 JAMB SIM.**

SCALE: 3" = 1'-0"

3