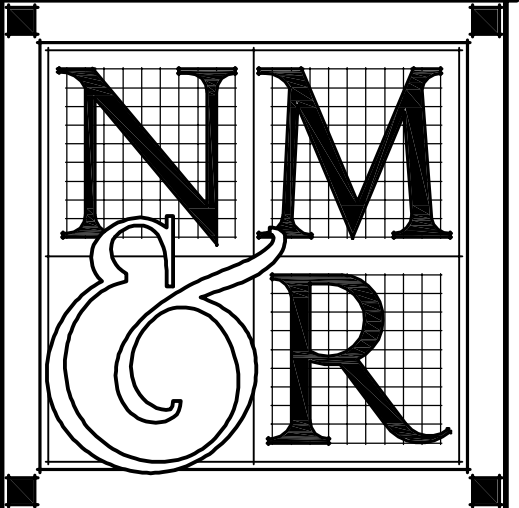


A WINDOW REPLACEMENT FOR FALL RIVER ELEMENTARY SCHOOL

24977 Curve Street, Fall River Mills, California

Copyright © 2015
All ideas, designs, arrangements and plans indicated or represented by this drawing are owned by, and the property of, NICHOLS, MELBURG & ROSSETTO and were created, evolved and developed for use on, and in conjunction with, the specified project. None of such ideas, designs, arrangements or plans shall be used by, or disclosed to any person, firm or corporation for any purpose whatsoever without the written permission of NICHOLS, MELBURG & ROSSETTO.



**NICHOLS
MELBURG
ROSSETTO**
ARCHITECTS + ENGINEERS
300 KNOLLCREST DRIVE
REDDING, CA 96002
(530) 222-3300 (530) 222-3538 FAX
http://www.nmrdesign.com

CONSULTANTS

APPLICABLE CODES

APPLICABLE CODES: ALL WORK PERFORMED & PRODUCTS FURNISHED SHALL COMPLY AS APPLICABLE WITH THE LATEST REGULATIONS OF:

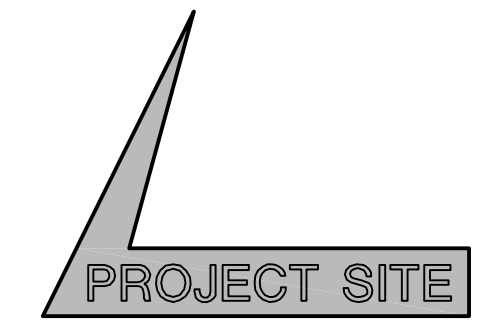
- 2013 BUILDING STANDARDS ADMINISTRATIVE CODE, PART 1, TITLE 24 C.C.R.
- 2013 CALIFORNIA BUILDING CODE (CBC), PART 2, TITLE 24 C.C.R.
(2012 INTERNATIONAL BUILDING CODE VOLUMES 1-2 AND 2013 CALIFORNIA AMENDMENTS)
- 2013 CALIFORNIA ELECTRICAL CODE (CEC), PART 3, TITLE 24 C.C.R.
(2011 NATIONAL ELECTRICAL CODE AND 2013 CALIFORNIA AMENDMENTS)
- 2013 CALIFORNIA MECHANICAL CODE (CMC), PART 4, TITLE 24 C.C.R.
(2012 UNIFORM MECHANICAL CODE AND 2013 CALIFORNIA AMENDMENTS)
- 2013 CALIFORNIA PLUMBING CODE (CPC), PART 5, TITLE 24 C.C.R.
(2012 PLUMBING CODE AND 2013 CALIFORNIA AMENDMENTS)
- 2013 CALIFORNIA ENERGY CODE, PART 6, TITLE 24 C.C.R.
- 2013 CALIFORNIA FIRE CODE, PART 9, TITLE 24 C.C.R.
(2012 INTERNATIONAL FIRE CODE AND 2013 CALIFORNIA AMENDMENTS)
- 2013 CALIFORNIA EXISTING BUILDING CODE, PART 10, TITLE 24 C.C.R.
(2012 INTERNATIONAL EXISTING BUILDING CODE AND 2013 CALIFORNIA AMENDMENTS)
- 2013 CALIFORNIA "GREEN" BUILDING STANDARDS CODE, PART 11, TITLE 24 C.C.R.
- 2013 CALIFORNIA REFERENCED STANDARDS, PART 12, TITLE 24 C.C.R.
- TITLE 8 C.C.R., CHAPTER 4, SUB-CHAPTER 6-ELEVATOR SAFETY ORDERS
- TITLE 19 C.C.R., PUBLIC SAFETY, STATE FIRE MARSHAL REGULATIONS

APPLICABLE STANDARDS: ALL WORK PERFORMED & PRODUCTS FURNISHED SHALL COMPLY AS APPLICABLE WITH THE LATEST REGULATIONS OF:

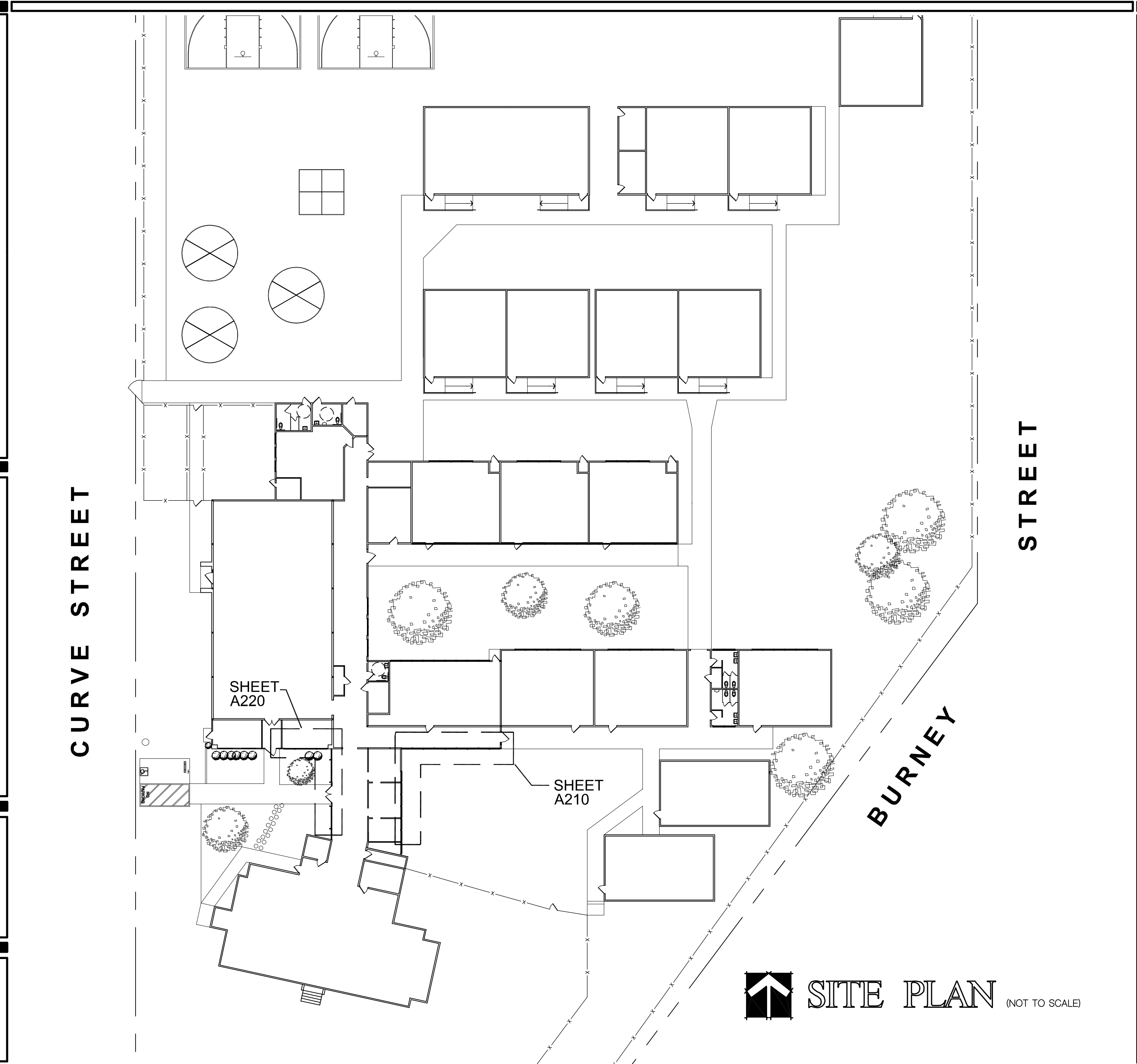
- 2013 NFPA 13 AUTOMATIC SPRINKLER SYSTEMS
- 2013 NFPA 14 STANDPIPE SYSTEMS
- 2013 NFPA 17a WET CHEMICAL SYSTEMS
- 2013 NFPA 20 STATIONARY PUMPS
- 2013 NFPA 24 PRIVATE FIRE MAINS
- 2013 NFPA 72 NATIONAL FIRE ALARM CODE (CALIFORNIA AMENDED)
- 2013 NFPA 253 CRITICAL RADIANT FLUX OF FLOOR COVERING SYSTEMS
- 2013 NFPA 2001 CLEAN AGENT FIRE EXTINGUISHING SYSTEMS
- 2013 NFPA 80 STANDARD FOR FIRE DOORS & OTHER OPENING PROTECTIONS

VICINITY MAP

(NOT TO SCALE)



PROJECT SITE



CURVE STREET


BURNEY STREET

STREET

SHEET A220

SHEET A210

LICENSE STAMPS



PROJECT NAME
A WINDOW REPLACEMENT FOR FALL RIVER ELEMENTARY SCHOOL

FALL RIVER JOINT UNIFIED SCHOOL DISTRICT
FALL RIVER MILLS, CA

SHEET TITLE
TITLE SHEET

DRAWING STATUS
CONSTRUCTION DOCUMENT SET FOR CONSTRUCTION

REVISIONS

Sym.	Description	By	Date

Drawn By: DF
Checked By: WT
Date Drawn: 4.17.15
Scale: AS NOTED
Job No.: 14-2674.10

SHEET No.
A000

LEAD CERTIFICATION

THE CONTRACTOR IS REQUIRED BY THE ENVIRONMENTAL PROTECTION AGENCY TO FOLLOW LEAD-SAFE PRACTICES & THE REQUIREMENTS OF THE EPA'S LEAD-BASED PAINT RENOVATION, REPAIR & PAINTING PROGRAM RULE. THE CONTRACTOR SHALL FURNISH EPA LEAD-BASE REMOVAL CERTIFICATION PRIOR TO BEGINNING WORK.

DRAWING INDEX

A000	TITLE SHEET
A100	WINDOW TYPES
A210	DEMO/NEW WINDOW PLANS & EXTERIOR ELEVATIONS
A220	DEMO/NEW WINDOW PLANS & EXTERIOR ELEVATIONS
A700	NEW WINDOW DETAILS

PROJECT DESCRIPTION

THE PROJECT CONSISTS OF REMOVAL OF EXISTING WOOD & ALUMINUM WINDOWS & REPLACEMENT WITH NEW VINYL CLAD WINDOWS & ASSOCIATED INTERIOR & EXTERIOR WINDOW TRIM.

SYMBOLS

	DETAIL NUMBER SHEET WHERE DETAIL IS DRAWN		WINDOW TYPE
	KEYNOTE		

PROJECT DATA

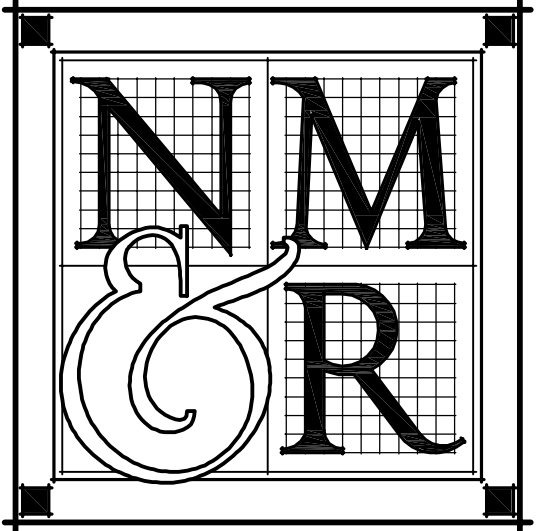
1 OCCUPANCY GROUP: E
2 CONSTRUCTION TYPE: TYPE V, NON-RATED

GENERAL NOTES

1 ALL WORK SHALL BE IN ACCORDANCE WITH APPLICABLE ADOPTED ORDINANCES, BUILDING CODES, AND FIRE PREVENTION CODES. REFER TO THE CODE SUMMARY FOR A LIST OF KNOWN APPLICABLE CODES. DISCREPANCIES BETWEEN THESE CODES AND THE CONSTRUCTION DOCUMENTS, IF DISCOVERED, SHALL PROMPTLY BE BROUGHT TO THE ATTENTION OF THE ARCHITECT. THE CONSTRUCTION DOCUMENTS SHALL NOT BE CONSTRUED AS PERMITTING WORK THAT DOES NOT COMPLY WITH APPLICABLE CODES.

2 DIMENSIONS ARE TO FACE OF STUDS, CMU, OR SLAB, AND TO CENTERLINES OF STEEL MEMBERS, UNLESS NOTED OTHERWISE. DO NOT SCALE THESE DRAWINGS. DIMENSIONS NOTED AS "CLEAR" (CLR) ARE TAKEN TO THE FACE OF FINISH MATERIALS. VERIFY DIMENSIONS OF PREFABRICATED AND MANUFACTURED ITEMS AND COORDINATE ROUGH OPENINGS ACCORDINGLY.

Log# Name: Dean F
 Plot Date: April 09, 2015 - 4:31 PM
 File Name: N:\projects\00000000\Education\14-2674-10 FRSD Fall River Elementary\00 CAD Files\Sheet\PHASE A\A000...TITLE.dwg
 PLOT# 1, User: D:\x\FRED...



NICHOLS MELBURG ROSSETTO
 ARCHITECTS + ENGINEERS
 300 KNOLLCREST DRIVE
 REDDING, CA 96002
 (530) 222-3300 (530) 222-3538 FAX
 http://www.nmrdesign.com

CONSULTANTS

LICENSE STAMPS



PROJECT NAME
A WINDOW REPLACEMENT FOR FALL RIVER ELEMENTARY SCHOOL

FALL RIVER JOINT UNIFIED SCHOOL DISTRICT
 FALL RIVER MILLS, CA

SHEET TITLE
WINDOW TYPES

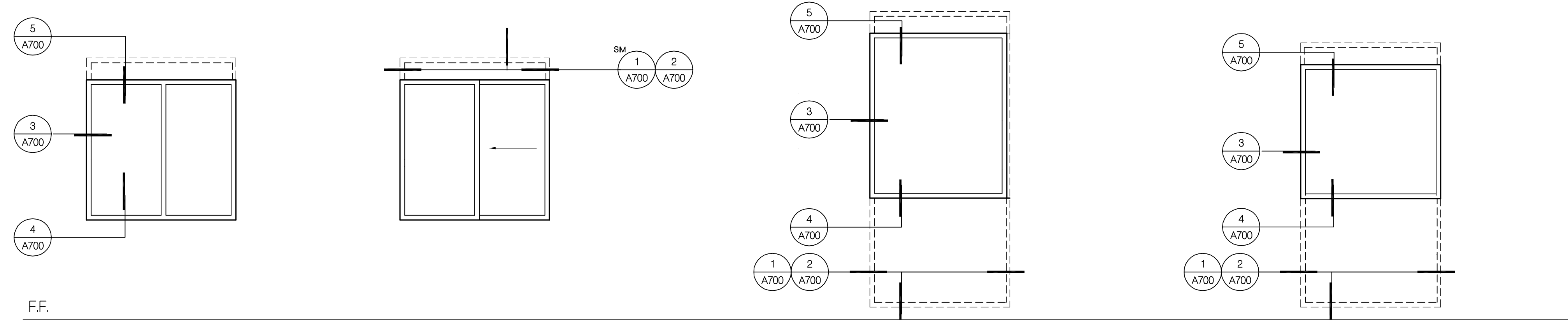
DRAWING STATUS
CONSTRUCTION DOCUMENT SET FOR CONSTRUCTION

REVISIONS
 Sym. Description By Date

Drawn By **DF**
 Checked By **WT**
 Date Drawn **4.17.15**
 Scale **1/2" = 1'-0"**
 Job No. **14-2674.10**

SHEET No.

A100



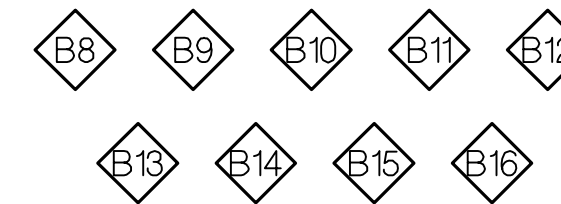
VINYL FIXED



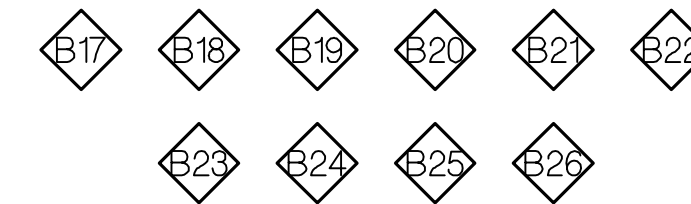
VINYL OPERABLE



VINYL FIXED

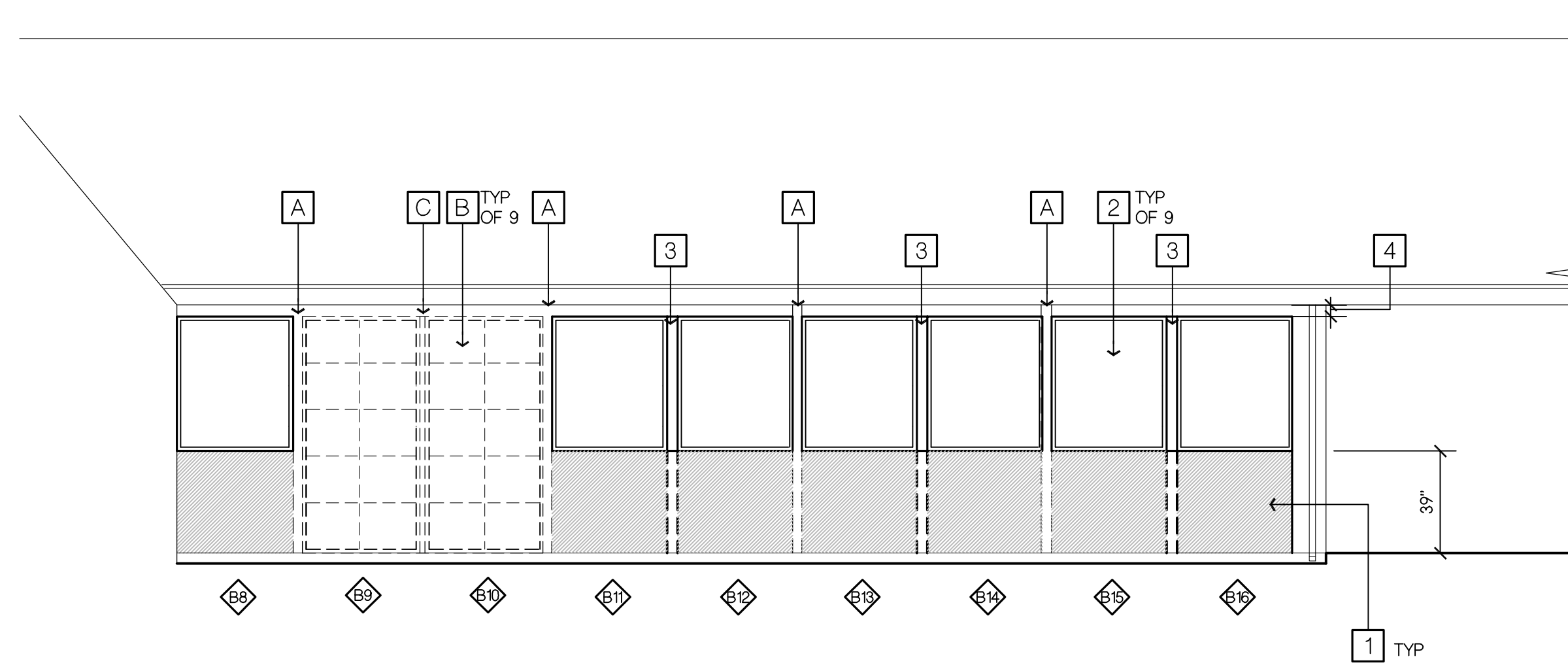
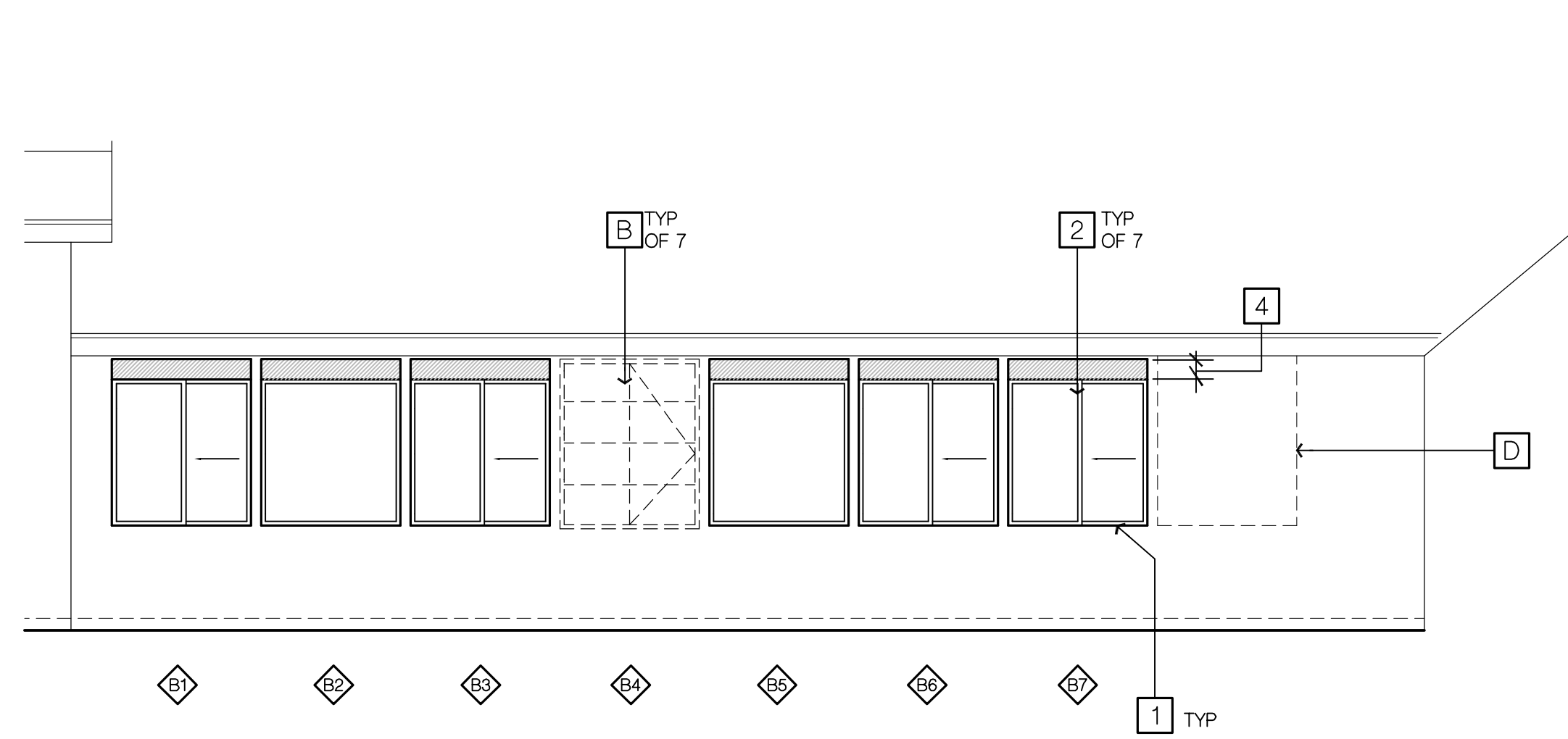
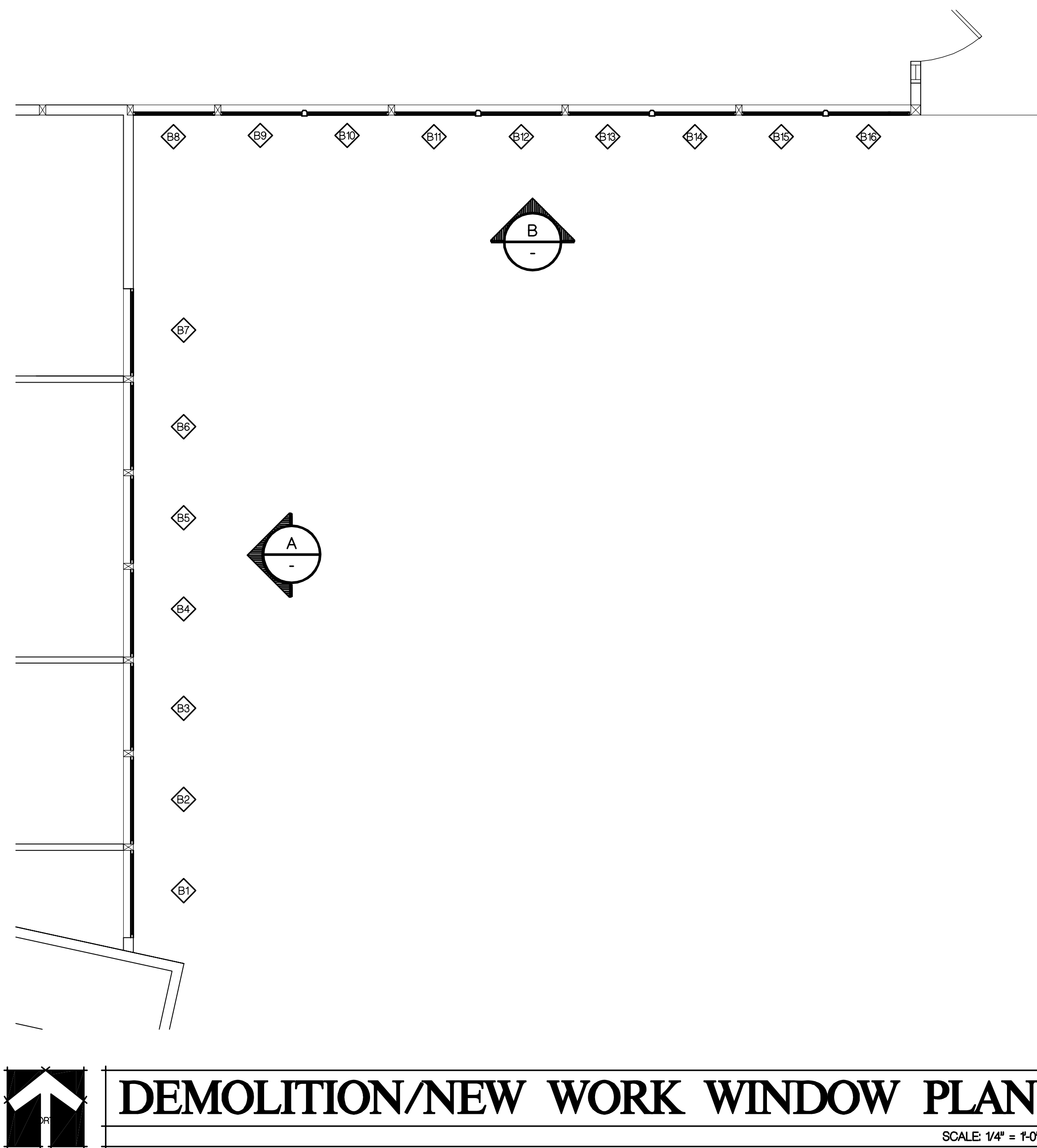


VINYL FIXED



Fall River Elementary Window Schedule Ordering Information							Window Spec Information			
							White Vinyl, PlyGem dual glazed windows Low E tinted with option for reflective glazing Awning vent in top section of vented tall windows Temper bottom 2 sections of windows adjacent doors			
Window Count	Window ID Number	Order Window Width	Order Window Height	Vent	Temp	Window Schedule Symbol	Quantity	Installation Notes	Added Framing or Alterations	Special Notes
Add Two 2X's to head of all Phase 1 openings for plaster infill										
1	B1	45-3/4"	45-1/2"	X		M1	2	Slide new window thru created opening & trim		XO slider
2	B2	37-3/4"	45-1/2"			L2	1	"		
3	B3	45-1/2"	45-1/2"	X		M3	1	"		XO slider
4	B4	46-3/8"	45-1/2"	X		M4	1	Slide new window thru created opening & trim		XO slider
5	B5	45-3/4"	45-1/2"			L1	1	"		
6	B6	45-3/4"	45-1/2"	X		M1				XO slider
7	B7	46-1/8"	45-1/2"	X		M5	1	Slide new window thru created opening & trim		XO slider
8	B8	42-3/8"	44-1/2"			L6	1	Slide new window thru created opening & trim		
9	B9	44-1/8"	44-1/2"			L7	2	"		
10	B10	44-1/8"	44-1/2"			L7		"		
11	B11	43-3/4"	44-1/2"			L8	2	"		
12	B12	43-3/4"	44-1/2"			L8		"		
13	B13	44-1/4"	44-1/2"			L9	3	"		
14	B14	44-1/4"	44-1/2"			L9		"		
15	B15	44-1/4"	44-1/2"			L9		"		
16	B16	44-1/4"	44-1/2"		X	L9	1	"		Temper window adjacent door
17	B17	41-1/8"	44-1/2"			L10	2	Slide new window thru created opening & trim		
18	B18	41-1/8"	44-1/2"			L10		"		
19	B19	40-3/8"	44-1/2"			L11	2	"		
20	B20	40-3/8"	44-1/2"			L11		"		
21	B21	35-3/4"	44-1/2"			L12	1	Slide new window thru created opening & trim		
22	B22	41"	44-1/2"			L13	1	"		
23	B23	41"	44-1/2"		X	L13	1	"		Temper window adjacent door
Double 36" doors										
24	B24	40-7/8"	44-1/2"		X	L14	1	Slide new window thru created opening & trim		Temper window adjacent door
25	B25	40-7/8"	44-1/2"			L14	2	"		
26	B26	40-7/8"	44-1/2"			L14		"		
26	Total Windows						Total 26			

LogIn Name: Dean F
 Plot Date: May 05, 2015 - 2:04 pm
 File Name: N:\Projects\000\Education\14-2674-00 FRSD Fall River Elementary\00 CAD Files\Sheet\PHASE 1\A210.dwg
 PLOT: P:\RES\3607.LIN - 0...NMR



A EXTERIOR ELEVATION
 SCALE: 3/16" = 1'-0"

B EXTERIOR ELEVATION
 SCALE: 3/16" = 1'-0"

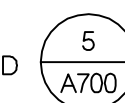
DEMOLITION KEY NOTES

- A** (E) STRUCTURAL POST LOCATION
- B** DEMO (E) STEEL WINDOW UNIT
- C** DEMO (E) STEEL VERTICAL MULLION
- D** PREVIOUS WINDOW INFILL

KEY NOTES

ITEMS NOT LISTED AS EXISTING OR (E) ARE TO BE CONSIDERED NEW

- 1** INFILL FRAMING
- 2** NEW VINYL WINDOW UNIT
- 3** STRUCTURAL POST
- 4** DBL 2x INFILL WHERE REQUIRED



GENERAL NOTES

1. CONTRACTOR IS TO PROTECT ALL TREES, SHRUBBERY & MECHANICAL EQUIPMENT ADJACENT TO THE BUILDING FROM DAMAGE DURING CONSTRUCTION.
2. FIELD-VERIFY EXISTING CONSTRUCTION DEPICTED IN THESE DRAWINGS AS IT IS UNCOVERED DURING CONSTRUCTION. NOTIFY THE ARCHITECT PROMPTLY IF EXISTING CONDITIONS ARE NOT AS INDICATED.
3. PROVIDE TEMPORARY DUSTPROOF PARTITIONS AS NECESSARY FOR SEPARATION OF CONSTRUCTION AREAS AND ADJACENT OCCUPIED AREAS.
4. ALL EXISTING CONSTRUCTION, FIXTURES, EQUIPMENT AND FINISHES TO REMAIN SHALL BE PROTECTED FROM DAMAGE DURING DEMOLITION AND NEW CONSTRUCTION.

LEAD BASED PAINT NOTE

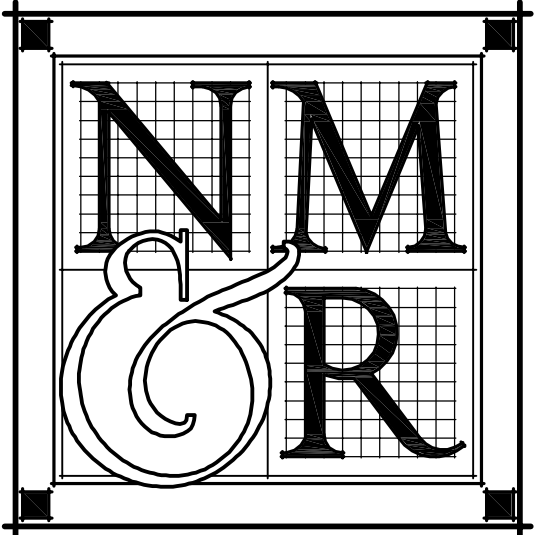
CONTRACTOR SHALL HAVE AT LEAST ONE EMPLOYEE ON SITE AT ALL TIMES WHO HAS RECEIVED EPA LEAD TRAINING. CERTIFICATE OF COMPLETION OF TRAINING TO BE FURNISHED AT DISTRICTS REQUEST.

LEGEND

- ◊ REMOVE PORTION OF (E) WINDOW SYSTEM PER APPLICABLE WINDOW DETAILS. PREPARE FOR NEW WINDOW SYSTEM. INSTALL NEW WINDOW SYSTEM
- ⊖ REMOVE (E) GLAZING SYSTEM. PREPARE FOR NEW GLAZING/GLAZING BEAD SYSTEM. INSTALL NEW GLAZING/GLAZING BEAD SYSTEM

Copyright © 2015

All ideas, designs, arrangements and plans indicated or represented by this drawing are created by and the property of NICHOLS MELBURG and ROSSETTO and were created, evolved and developed for use on, and in conjunction with, the specified project. None of such ideas, designs, arrangements or plans shall be used by, or disclosed to any person, firm or corporation for any purpose whatsoever without the written permission of NICHOLS MELBURG and ROSSETTO.



**NICHOLS
 MELBURG
 ROSSETTO**
 ARCHITECTS + ENGINEERS
 300 KNOLLCREST DRIVE
 REDDING, CA 96002
 (530) 222-3300 (530) 222-3538 FAX
 http://www.nmrdesign.com

CONSULTANTS

LICENSE STAMPS



PROJECT NAME

**A WINDOW
 REPLACEMENT
 FOR**

**FALL RIVER
 ELEMENTARY
 SCHOOL**

**FALL RIVER JOINT
 UNIFIED SCHOOL DISTRICT
 FALL RIVER MILLS, CA**

SHEET TITLE

**DEMO/NEW WORK
 WINDOW PLANS &
 ELEVATIONS**

**DRAWING STATUS
 CONSTRUCTION
 DOCUMENT SET
 FOR CONSTRUCTION**

REVISIONS

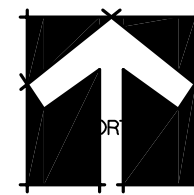
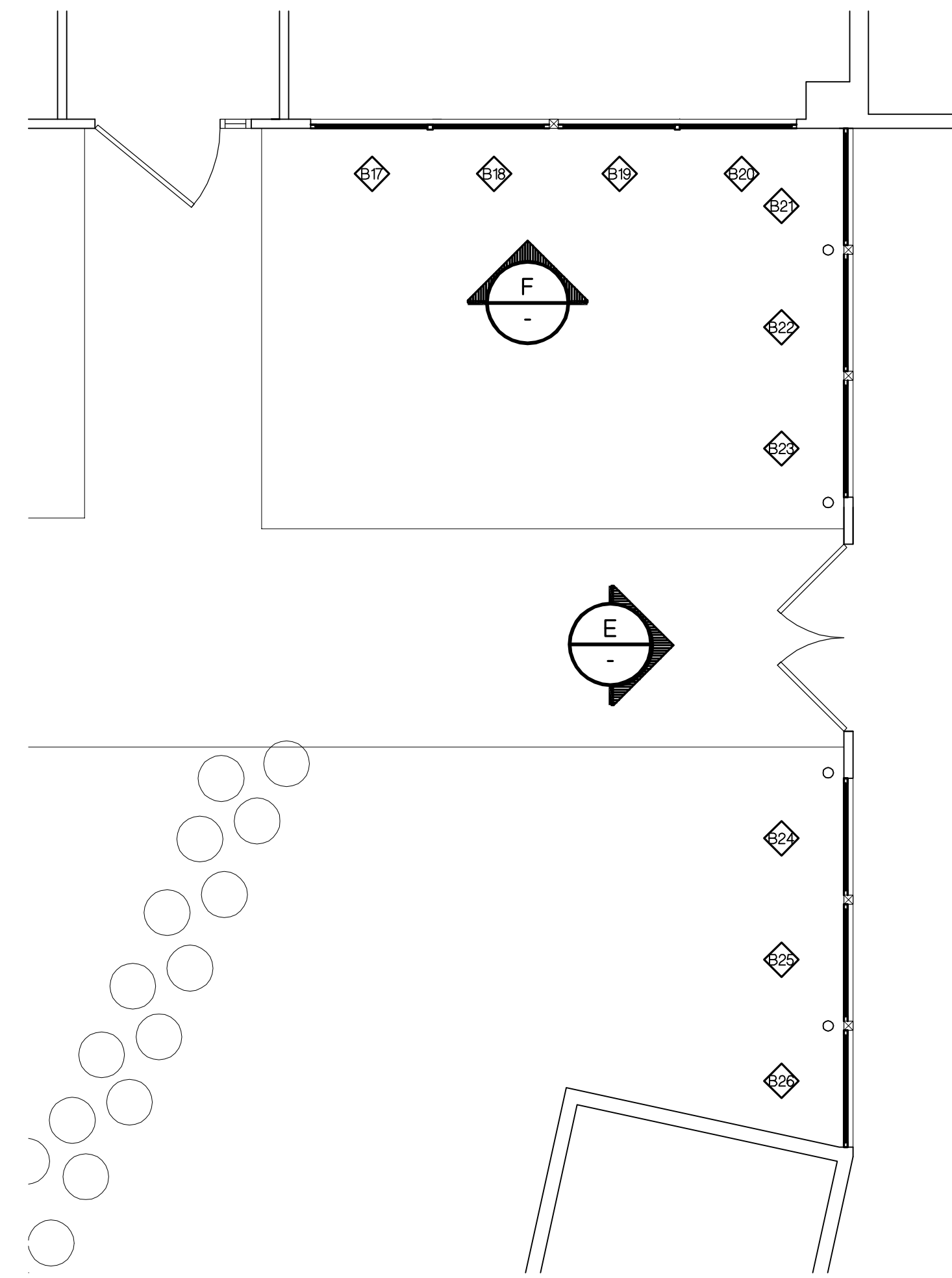
Sym. Description By Date

Drawn By	DF
Checked By	WT
Date Drawn	4.17.15
Scale	AS NOTED
Job No.	14-2674.10

SHEET No.

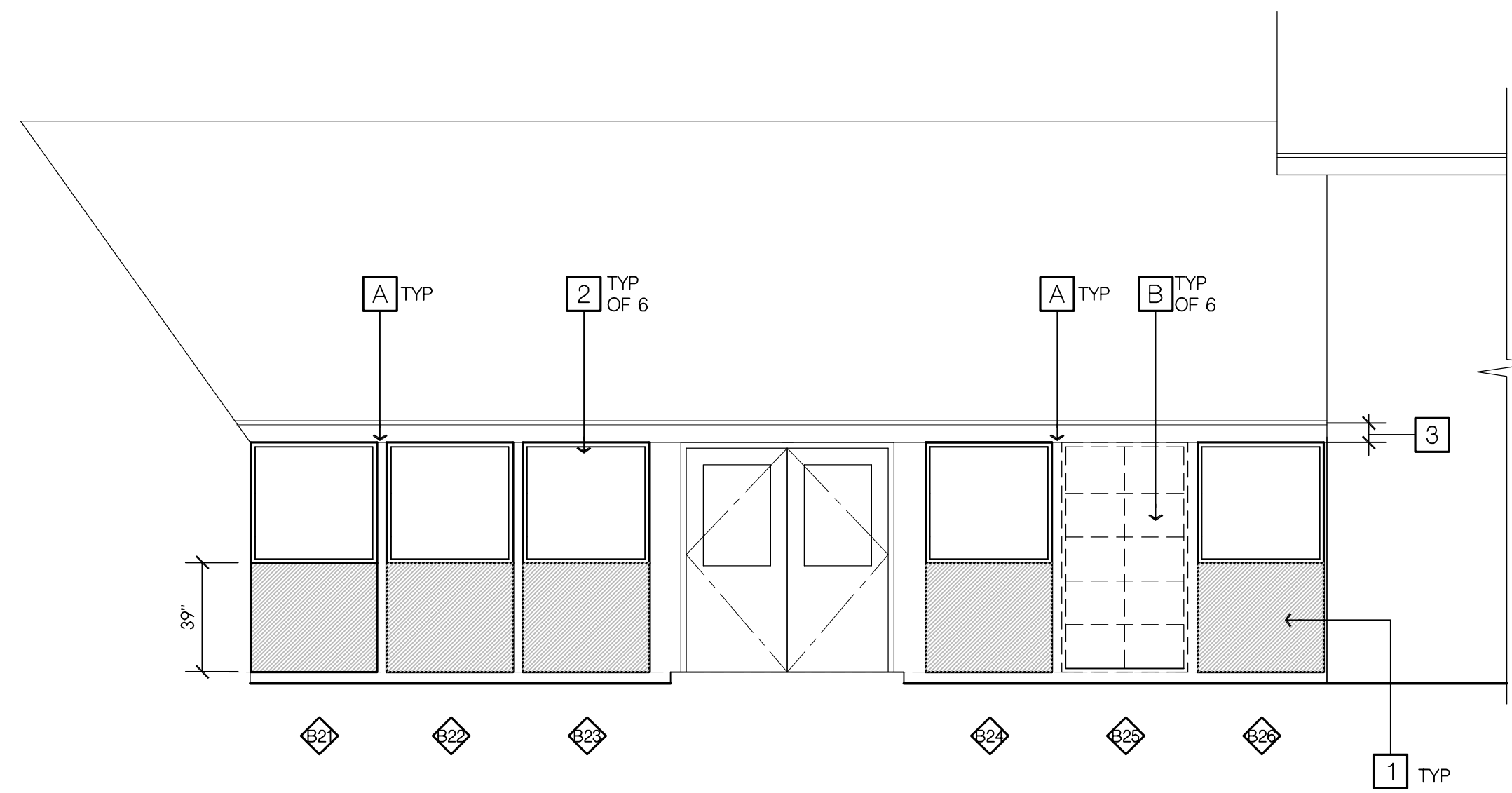
A210

LogIn Name: Dean F
 Plot Date: May 05, 2015 - 2:09 pm
 File Name: N:\Projects\000\Education\14-2674-00 FRSD Fall River Elementary\10-0 CAD Files\Sheet\PHASE 1\A220.dwg
 PLOT: P:\RES\360\1_11_15\10-0.dwg



DEMOLITION/NEW WORK WINDOW PLAN

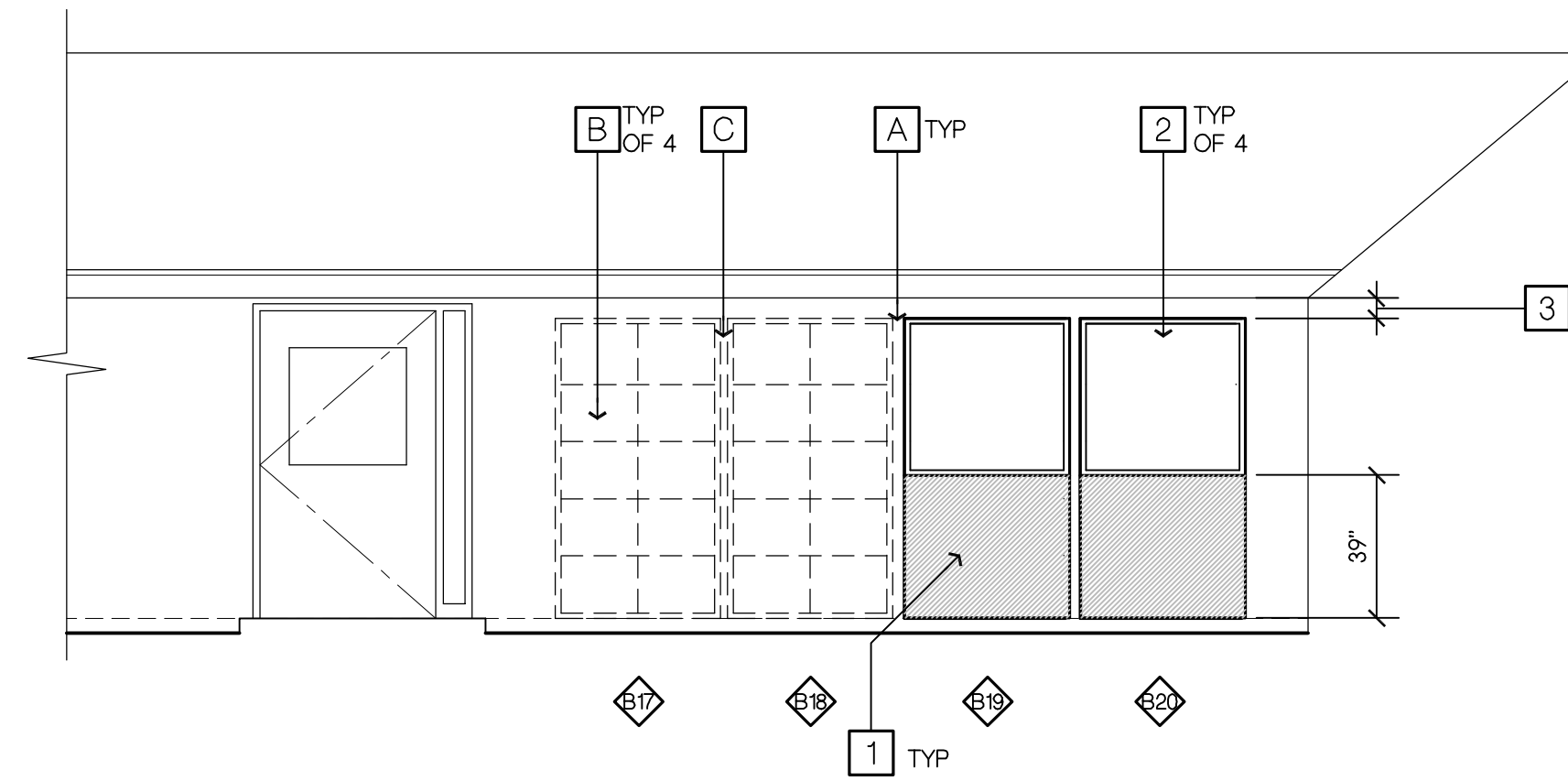
SCALE 1/4" = 1'-0"



WEST

E EXTERIOR ELEVATION

SCALE 1/4" = 1'-0"



SOUTH

F EXTERIOR ELEVATION

SCALE 1/4" = 1'-0"

DEMOLITION KEY NOTES

- A (E) STRUCTURAL POST LOCATION
- B DEMO (E) STEEL WINDOW UNIT
- C DEMO (E) STEEL VERTICAL MULLION

KEY NOTES

ITEMS NOT LISTED AS EXISTING OR (E) ARE TO BE CONSIDERED NEW

- 1 INFILL FRAMING - EXTERIOR FINISH SHALL MATCH (E)
- 2 NEW VINYL WINDOW UNIT
- 3 DBL 2x INFILL WHERE REQUIRED



GENERAL NOTES

- CONTRACTOR IS TO PROTECT ALL TREES, SHRUBBERY & MECHANICAL EQUIPMENT ADJACENT TO THE BUILDING FROM DAMAGE DURING CONSTRUCTION.
- FIELD-VERIFY EXISTING CONSTRUCTION DEPICTED IN THESE DRAWINGS AS IT IS UNCOVERED DURING CONSTRUCTION. NOTIFY THE ARCHITECT PROMPTLY IF EXISTING CONDITIONS ARE NOT AS INDICATED.
- PROVIDE TEMPORARY DUSTPROOF PARTITIONS AS NECESSARY FOR SEPARATION OF CONSTRUCTION AREAS AND ADJACENT OCCUPIED AREAS.
- ALL EXISTING CONSTRUCTION, FIXTURES, EQUIPMENT AND FINISHES TO REMAIN SHALL BE PROTECTED FROM DAMAGE DURING DEMOLITION AND NEW CONSTRUCTION.

LEAD BASED PAINT NOTE

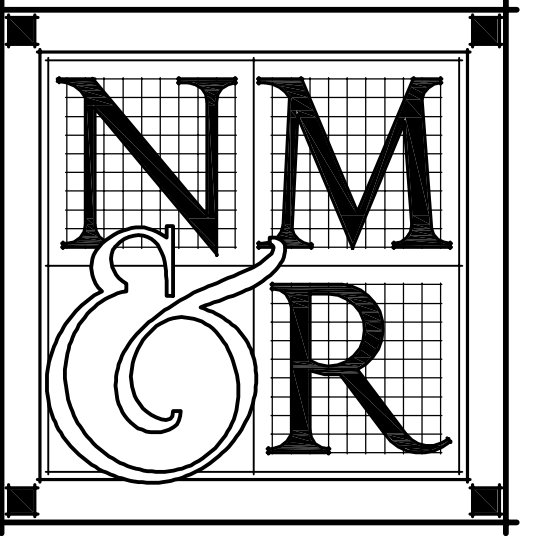
CONTRACTOR SHALL HAVE AT LEAST ONE EMPLOYEE ON SITE AT ALL TIMES WHO HAS RECEIVED EPA LEAD TRAINING CERTIFICATE OF COMPLETION OF TRAINING TO BE FURNISHED AT DISTRICTS REQUEST.

LEGEND

- ◊ REMOVE PORTION OF (E) WINDOW SYSTEM PER APPLICABLE WINDOW DETAILS. PREPARE FOR NEW WINDOW SYSTEM. INSTALL NEW WINDOW SYSTEM
- ⊖ REMOVE (E) GLAZING SYSTEM. PREPARE FOR NEW GLAZING/GLAZING BEAD SYSTEM. INSTALL NEW GLAZING/GLAZING BEAD SYSTEM

Copyright © 2015

All ideas, designs, arrangements and plans indicated or represented by this drawing are created by and the property of NICHOLS MELBURG and ROSSETTO and were created, evolved and developed for use on, and in conjunction with, the specified project. None of such ideas, designs, arrangements or plans shall be used by, or disclosed to any person, firm or corporation for any purpose whatsoever without the written permission of NICHOLS MELBURG and ROSSETTO.

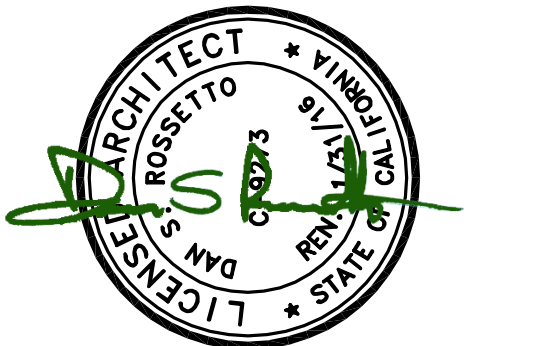


**NICHOLS
MELBURG
&
ROSSETTO**
ARCHITECTS + ENGINEERS

300 KNOLLCREST DRIVE
REDDING, CA 96002
(530) 222-3300 (530) 222-3538 FAX
<http://www.nmrdesign.com>

CONSULTANTS

LICENSE STAMPS



PROJECT NAME

**A WINDOW
REPLACEMENT
FOR**

**FALL RIVER
ELEMENTARY
SCHOOL**

**FALL RIVER JOINT
UNIFIED SCHOOL DISTRICT
FALL RIVER MILLS, CA**

SHEET TITLE

**DEMO/NEW WORK
WINDOW PLANS &
ELEVATIONS**

**DRAWING STATUS
CONSTRUCTION
DOCUMENT SET
FOR CONSTRUCTION**

REVISIONS

Sym. Description By Date

Drawn By	DF
Checked By	WT
Date Drawn	4.17.15
Scale	AS NOTED
Job No.	14-2674.10

SHEET No.

A220

