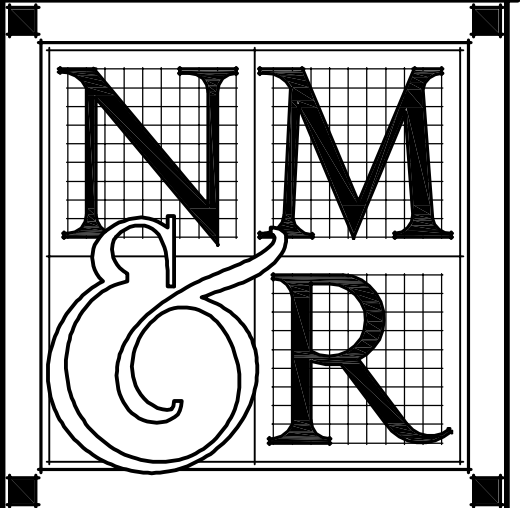


# A WINDOW REPLACEMENT FOR FALL RIVER ELEMENTARY SCHOOL

24977 Curve Street, Fall River Mills, California

Copyright © 2015  
All ideas, designs, arrangements and plans indicated or represented by this drawing are owned by, and the property of, NICHOLS, MELBURG & ROSSETTO and were created, evolved and developed for use on, and in conjunction with, the specified project. None of such ideas, designs, arrangements or plans shall be used by, or disclosed to any person, firm or corporation for any purpose whatsoever without the written permission of NICHOLS, MELBURG & ROSSETTO.



**NICHOLS  
MELBURG  
ROSSETTO**  
ARCHITECTS + ENGINEERS  
300 KNOLLCREST DRIVE  
REDDING, CA 96002  
(530) 222-3300 (530) 222-3538 FAX  
http://www.nmrdesign.com

CONSULTANTS

### APPLICABLE CODES

APPLICABLE CODES: ALL WORK PERFORMED & PRODUCTS FURNISHED SHALL COMPLY AS APPLICABLE WITH THE LATEST REGULATIONS OF:

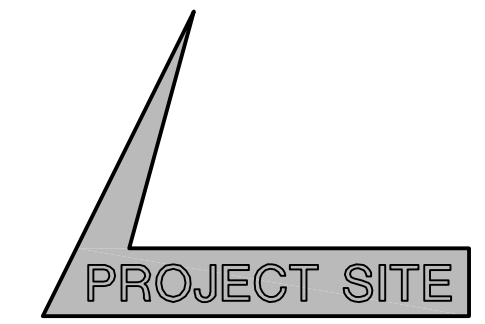
- 2013 BUILDING STANDARDS ADMINISTRATIVE CODE, PART 1, TITLE 24 C.C.R.
- 2013 CALIFORNIA BUILDING CODE (CBC), PART 2, TITLE 24 C.C.R.  
(2012 INTERNATIONAL BUILDING CODE VOLUMES 1-2 AND 2013 CALIFORNIA AMENDMENTS)
- 2013 CALIFORNIA ELECTRICAL CODE (CEC), PART 3, TITLE 24 C.C.R.  
(2011 NATIONAL ELECTRICAL CODE AND 2013 CALIFORNIA AMENDMENTS)
- 2013 CALIFORNIA MECHANICAL CODE (CMC), PART 4, TITLE 24 C.C.R.  
(2012 UNIFORM MECHANICAL CODE AND 2013 CALIFORNIA AMENDMENTS)
- 2013 CALIFORNIA PLUMBING CODE (CPC), PART 5, TITLE 24 C.C.R.  
(2012 PLUMBING CODE AND 2013 CALIFORNIA AMENDMENTS)
- 2013 CALIFORNIA ENERGY CODE, PART 6, TITLE 24 C.C.R.
- 2013 CALIFORNIA FIRE CODE, PART 9, TITLE 24 C.C.R.  
(2012 INTERNATIONAL FIRE CODE AND 2013 CALIFORNIA AMENDMENTS)
- 2013 CALIFORNIA EXISTING BUILDING CODE, PART 10, TITLE 24 C.C.R.  
(2012 INTERNATIONAL EXISTING BUILDING CODE AND 2013 CALIFORNIA AMENDMENTS)
- 2013 CALIFORNIA "GREEN" BUILDING STANDARDS CODE, PART 11, TITLE 24 C.C.R.
- 2013 CALIFORNIA REFERENCED STANDARDS, PART 12, TITLE 24 C.C.R.
- TITLE 8 C.C.R., CHAPTER 4, SUB-CHAPTER 6-ELEVATOR SAFETY ORDERS
- TITLE 19 C.C.R., PUBLIC SAFETY, STATE FIRE MARSHAL REGULATIONS

APPLICABLE STANDARDS: ALL WORK PERFORMED & PRODUCTS FURNISHED SHALL COMPLY AS APPLICABLE WITH THE LATEST REGULATIONS OF:

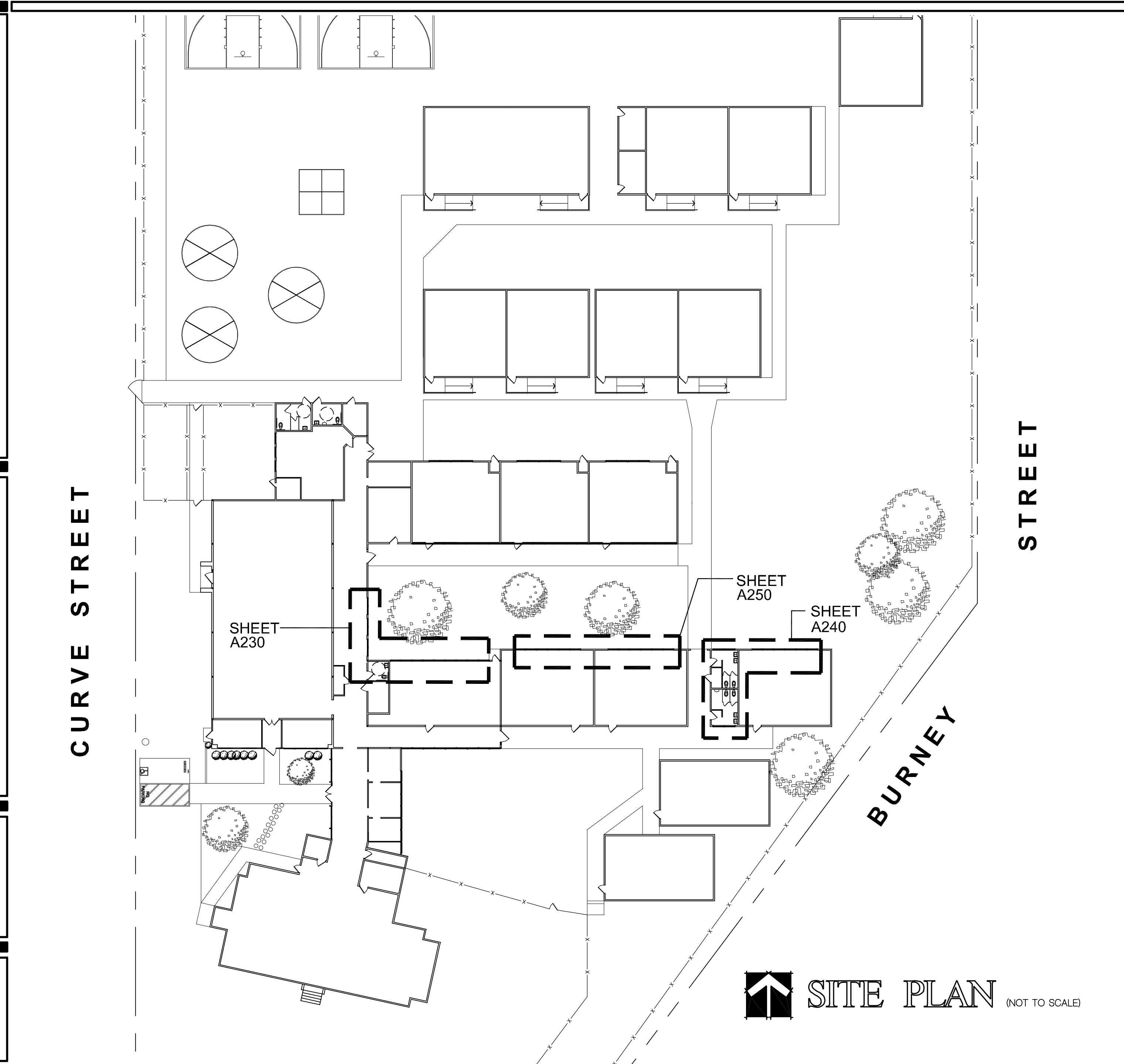
- 2013 NFPA 13 AUTOMATIC SPRINKLER SYSTEMS
- 2013 NFPA 14 STANDPIPE SYSTEMS
- 2013 NFPA 17a WET CHEMICAL SYSTEMS
- 2013 NFPA 20 STATIONARY PUMPS
- 2013 NFPA 24 PRIVATE FIRE MAINS
- 2013 NFPA 72 NATIONAL FIRE ALARM CODE (CALIFORNIA AMENDED)
- 2013 NFPA 253 CRITICAL RADIANT FLUX OF FLOOR COVERING SYSTEMS
- 2013 NFPA 2001 CLEAN AGENT FIRE EXTINGUISHING SYSTEMS
- 2013 NFPA 80 STANDARD FOR FIRE DOORS & OTHER OPENING PROTECTIONS

### VICINITY MAP

(NOT TO SCALE)



PROJECT SITE



SITE PLAN (NOT TO SCALE)

### LEAD CERTIFICATION

THE CONTRACTOR IS REQUIRED BY THE ENVIRONMENTAL PROTECTION AGENCY TO FOLLOW LEAD-SAFE PRACTICES & THE REQUIREMENTS OF THE EPA'S LEAD-BASED PAINT RENOVATION, REPAIR & PAINTING PROGRAM RULE. THE CONTRACTOR SHALL FURNISH EPA LEAD BASE REMOVAL CERTIFICATION PRIOR TO BEGINNING WORK.

### DRAWING INDEX

A000	TITLE SHEET
A100	WINDOW TYPES
A230	DEMO/NEW WINDOW PLANS & EXTERIOR ELEVATIONS
A240	DEMO/NEW WINDOW PLANS & EXTERIOR ELEVATIONS
A250	DEMO/NEW WINDOW PLANS & EXTERIOR ELEVATIONS
A700	NEW WINDOW DETAILS

### PROJECT DATA

1 OCCUPANCY GROUP: E  
2 CONSTRUCTION TYPE: TYPE V, NON-RATED

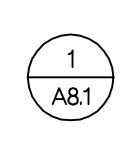
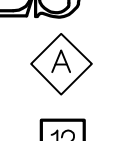
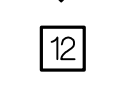
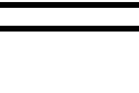
### PROJECT DESCRIPTION

THE PROJECT CONSISTS OF REMOVAL OF EXISTING WOOD & ALUMINUM WINDOWS & REPLACEMENT WITH NEW VINYL CLAD WINDOWS & ASSOCIATED INTERIOR & EXTERIOR WINDOW TRIM.

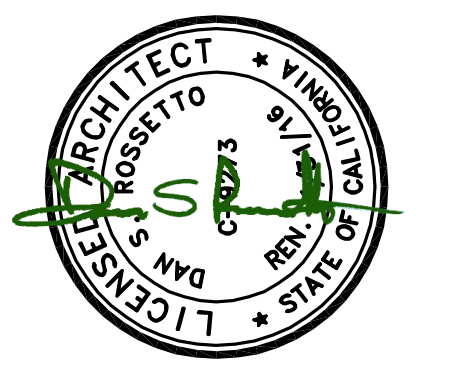
### GENERAL NOTES

- ALL WORK SHALL BE IN ACCORDANCE WITH APPLICABLE ADOPTED ORDINANCES, BUILDING CODES, AND FIRE PREVENTION CODES. REFER TO THE CODE SUMMARY FOR A LIST OF KNOWN APPLICABLE CODES. DISCREPANCIES BETWEEN THESE CODES AND THE CONSTRUCTION DOCUMENTS, IF DISCOVERED, SHALL PROMPTLY BE BROUGHT TO THE ATTENTION OF THE ARCHITECT. THE CONSTRUCTION DOCUMENTS SHALL NOT BE CONSTRUED AS PERMITTING WORK THAT DOES NOT COMPLY WITH APPLICABLE CODES.
- DIMENSIONS ARE TO FACE OF STUDS, CMU, OR SLAB, AND TO CENTERLINES OF STEEL MEMBERS, UNLESS NOTED OTHERWISE. DO NOT SCALE THESE DRAWINGS. DIMENSIONS NOTED AS "CLEAR" (CLR) ARE TAKEN TO THE FACE OF FINISH MATERIALS. VERIFY DIMENSIONS OF PREFABRICATED AND MANUFACTURED ITEMS AND COORDINATE ROUGH OPENINGS ACCORDINGLY.

### SYMBOLS

	DETAIL NUMBER SHEET WHERE DETAIL IS DRAWN		WINDOW TYPE
			KEYNOTE

### LICENSE STAMPS



PROJECT NAME  
**A WINDOW REPLACEMENT FOR FALL RIVER ELEMENTARY SCHOOL**

FALL RIVER JOINT UNIFIED SCHOOL DISTRICT  
FALL RIVER MILLS, CA

SHEET TITLE  
**TITLE SHEET**

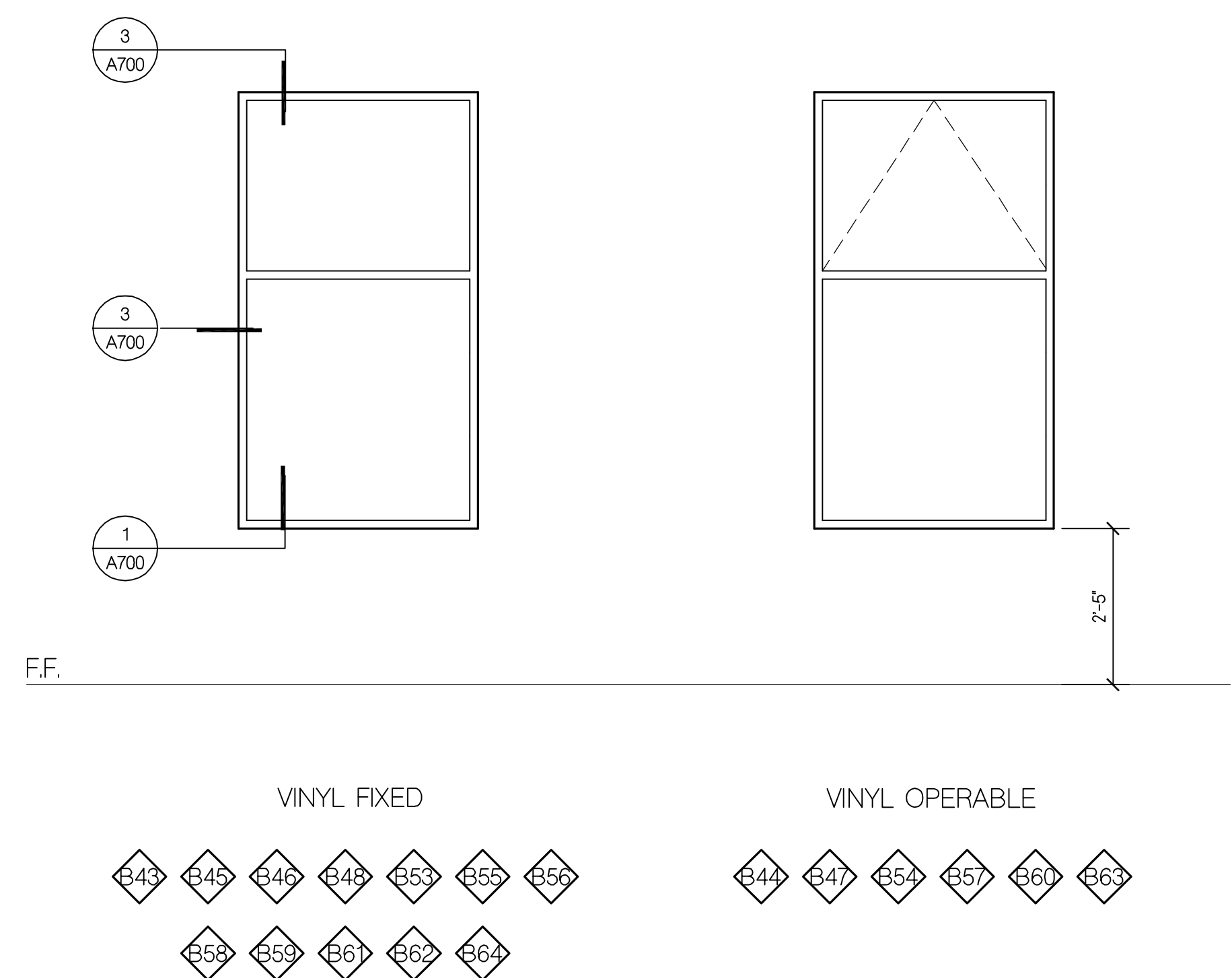
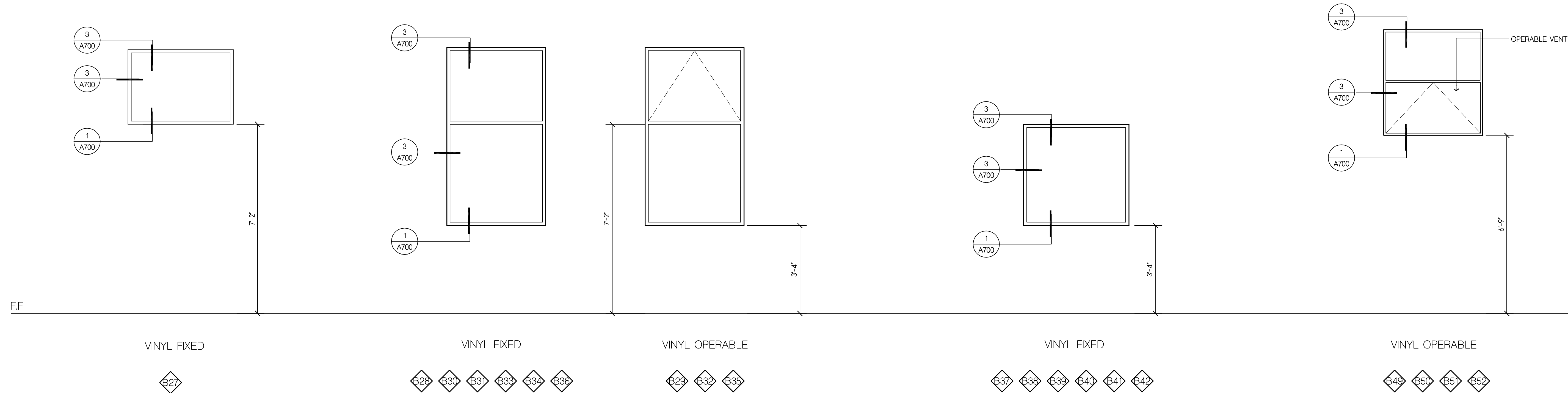
DRAWING STATUS  
**CONSTRUCTION DOCUMENT SET FOR CONSTRUCTION**

REVISIONS		
Sym.	Description	Date

Drawn By	DF
Checked By	WT
Date Drawn	4.17.15
Scale	AS NOTED
Job No.	14-2674.10

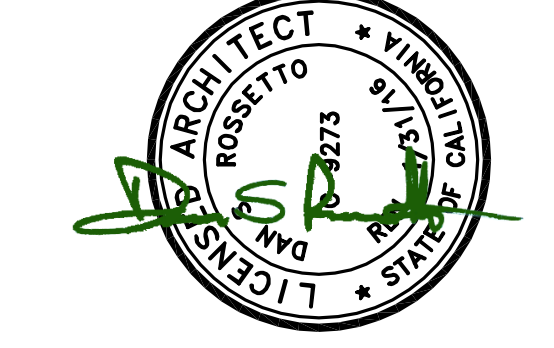
SHEET No.  
**A000**

Logn Name: Dean F  
 Plot Date: April 10, 2015 - 11:51 am  
 File Name: N:\projects\00000000\Education\14-2674-10 FRSD Fall River Elementary\00 CAD Files\Sheet\PHASE 1\A000...TITLE.dwg  
 PLOT: C:\Users\Dean F\AppData\Local\Temp\14-2674-10 FRSD Fall River Elementary\00 CAD Files\Sheet\PHASE 1\A000...TITLE.dwg



Fall River Elementary Window Schedule										Window Spec Information	
Ordering Information										White Vinyl, PlyGem dual glazed windows Low E tinted with option for reflective glazing Awning vent in top section of vented tall windows Temper bottom 2 sections of windows adjacent doors	
										04/15/15	
Window Count	Window ID Number	Order Width	Order Window Height	Vent	Temp	Window Schedule Symbol	Quantity	Installation Notes	Added Framing or Alterations	Special Notes	
Add One 2X at head of openings B27 thru B36											
1	B27	39-1/2"	28-3/4"			L15	1	Slide new window thru created opening & trim		Horizontal mullion 28-3/4" to match transom	
2	B28	44"	76-1/2"		X	J16	1		temper window adjacent door		
3	B29	43-3/4"	76-1/2"	X		K17	1				
4	B30	43-5/8"	76-1/2"			J18	1				
5	B31	44-1/4"	76-1/2"			J19	1				
6	B32	43-7/8"	76-1/2"	X		K20	1				
7	B33	44"	76-1/2"			J16	1				
8	B34	44-1/2"	76-1/2"			J21	1				
9	B35	44-1/8"	76-1/2"	X		K22	1				
10	B36	43-7/8"	76-1/2"			J20	1				
Add Two 2X's to head of openings B37 thru B48											
11	B37	79-1/2"	40-1/2"	X		M23	3	Slide new window thru created opening & trim		Vertical mullion between B37 & B38 centered	
	B38										
12	B39	79-1/2"	40-1/2"	X		M23		Slide new window thru created opening & trim		Vertical mullion between B39 & B40 centered	
	B40										
13	B41	79-1/2"	40-1/2"	X		M23		Slide new window thru created opening & trim		Vertical mullion between B41 & B42 centered	
	B42										
14	B43	44"	87-1/2"			J24	6	Slide new window thru created opening & trim		Vent or mullion same as C/A230 windows	
15	B44	44-1/8"	87-1/2"	X		K25	1				
16	B45	44-1/8"	87-1/2"			J25	1				
17	B46	44"	87-1/2"			J24					
18	B47	44"	87-1/2"	X		K24	2				
19	B48	44"	87-1/2"			J24					
20	B49	38-3/4"	47-1/2"	X		P26	4	Slide new window thru existing interior finishes	Polyseam Seal or trim to finishes	Awning bottom half of window, obscure glazing	
21	B50	38-3/4"	47-1/2"	X		P26				Awning bottom half of window, obscure glazing	
22	B51	38-3/4"	47-1/2"	X		P26		Slide new window thru existing interior finishes	Polyseam Seal or trim to finishes	Awning bottom half of window, obscure glazing	
23	B52	38-3/4"	47-1/2"	X		P26				Awning bottom half of window, obscure glazing	
Add Two 2X's to head of openings B53 thru B64											
24	B53	43-7/8"	87-1/4"			J27	1	Slide new window thru created opening & trim		Vent or mullion same as C/A230 windows	
25	B54	44"	87-1/4"	X		K24					
26	B55	44"	87-1/4"			J24					
27	B56	44"	87-1/4"			J24					
28	B57	43-7/8"	87-1/4"	X		K27	1				
29	B58	44"	87-1/4"			J24					
30	B59	43-7/8"	87"			J28	3	Slide new window thru created opening & trim		Vent or mullion same as C/A230 windows	
31	B60	44"	87"	X		K29	1				
32	B61	44-1/8"	87"			J30	1				
33	B62	43-7/8"	87"			J28					
34	B63	44-1/8"	87"	X		K30	1				
35	B64	43-7/8"	87"			J28					
<b>35</b>	<b>Total Windows</b>						<b>35</b>				

**LICENSE STAMPS**



**PROJECT NAME**  
**A WINDOW REPLACEMENT FOR FALL RIVER ELEMENTARY SCHOOL**

**FALL RIVER JOINT UNIFIED SCHOOL DISTRICT FALL RIVER MILLS, CA**

**SHEET TITLE**  
**WINDOW TYPES**

**DRAWING STATUS**  
**CONSTRUCTION DOCUMENT SET FOR CONSTRUCTION**

**REVISIONS**

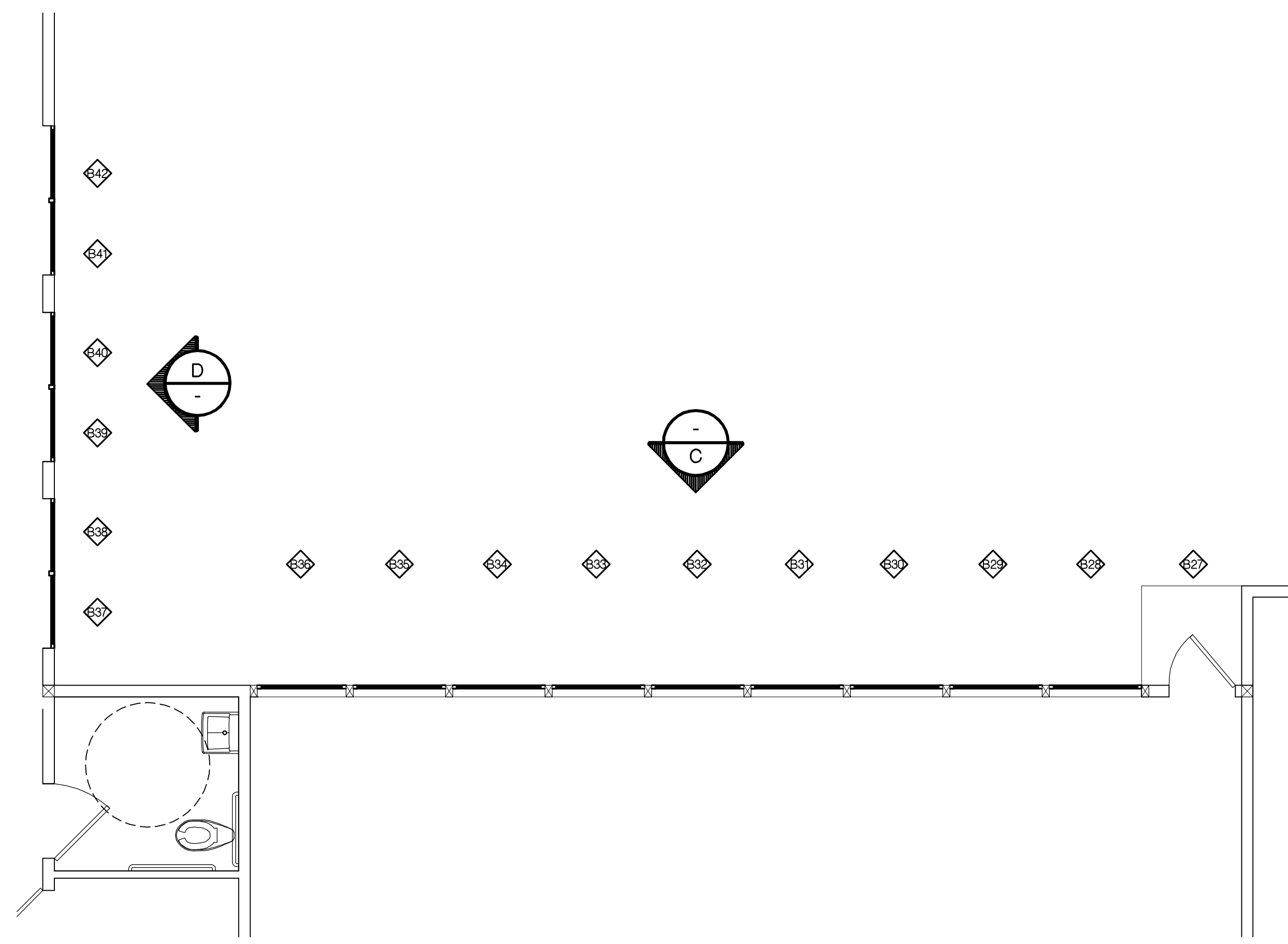
Sym.	Description	By	Date

<b>Drawn By</b>	DF
<b>Checked By</b>	WT
<b>Date Drawn</b>	4.17.15
<b>Scale</b>	1/2" = 1'-0"
<b>Job No.</b>	14-2674.10

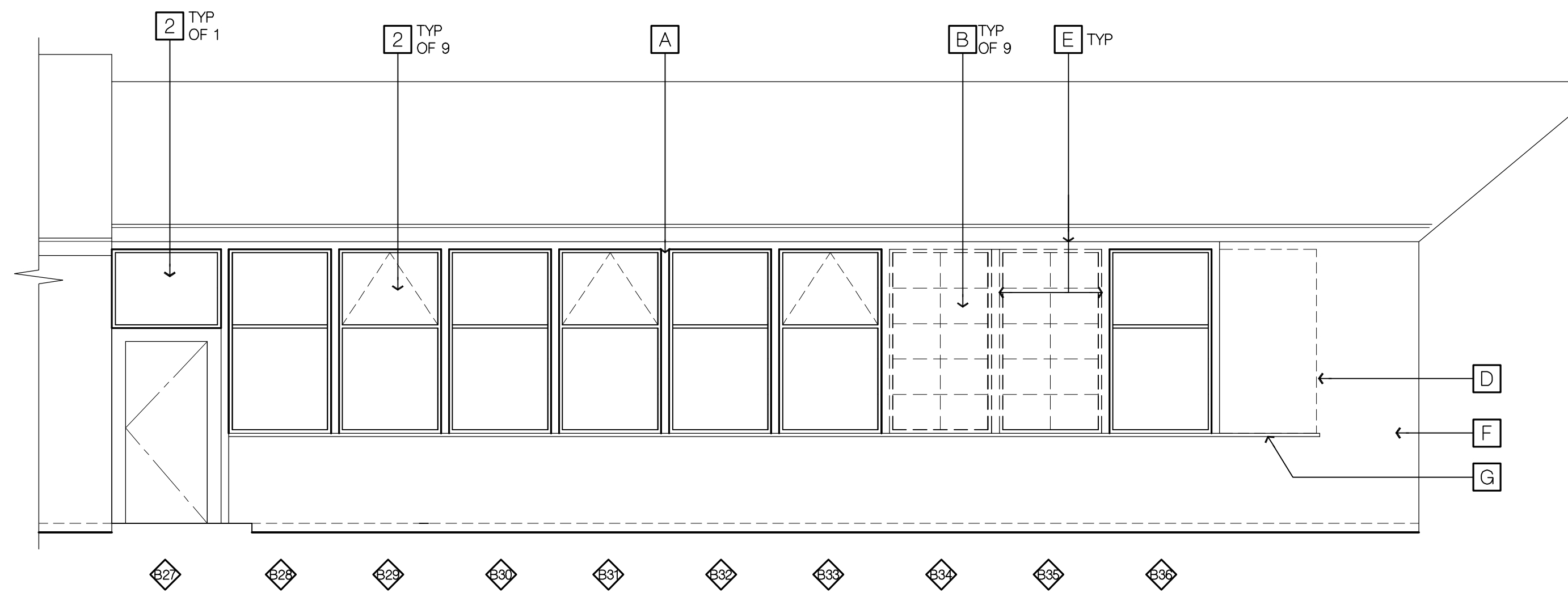
**SHEET No.**

**A100**

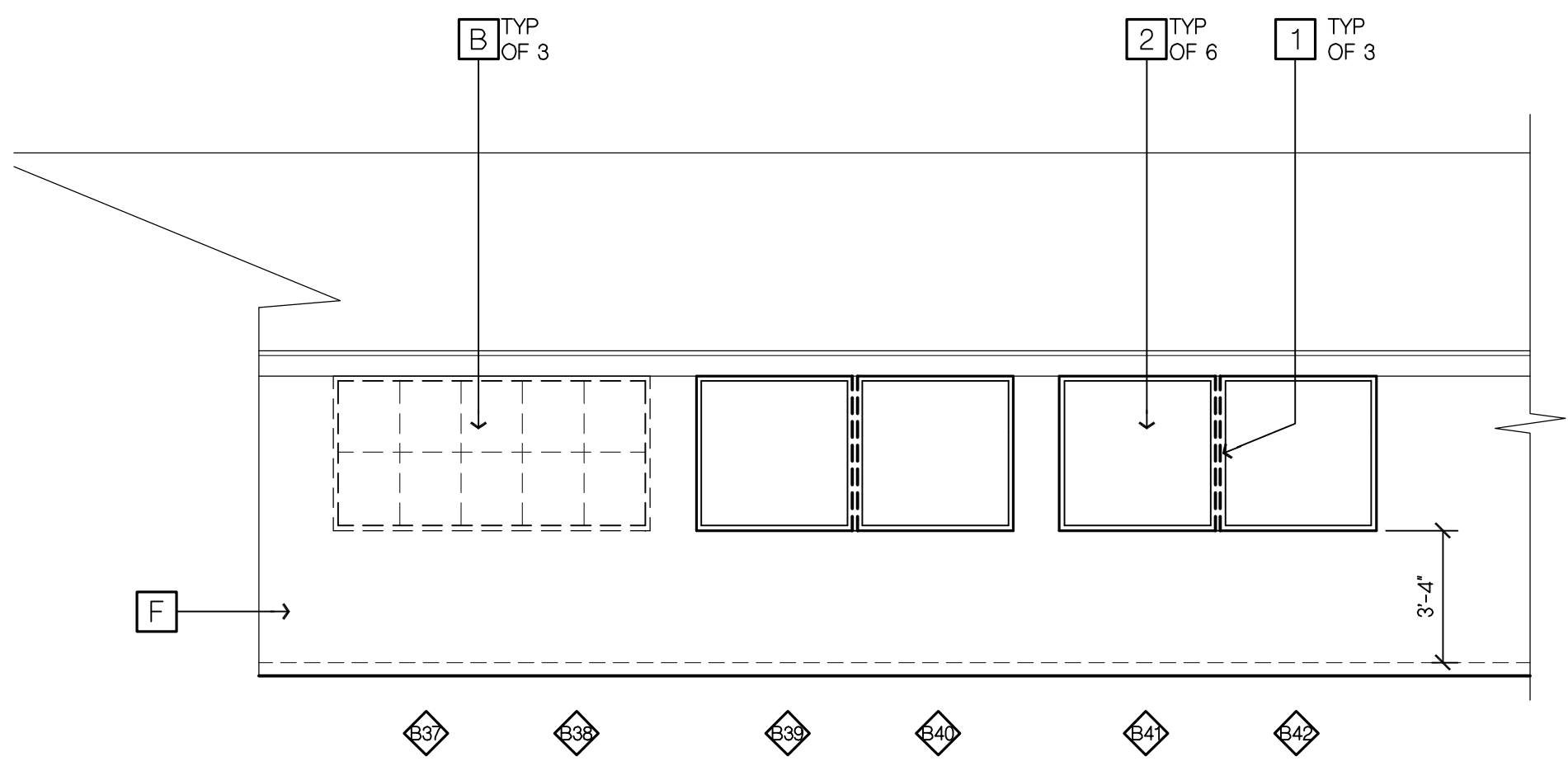
LogIn Name: Dean F  
 Plot Date: May 06, 2015 - 10:45 am  
 File Name: N:\Projects\000\Education\14-2674-10 FRSD Fall River Elementary\00 CAD Files\Sheet\PHASE A\CD\DWG  
 PLOTS: P:\RES\360\1\_11\_15\15-0\_1.NIT



**DEMOLITION/NEW WORK WINDOW PLAN**  
 SCALE: 1/4" = 1'-0"



**C** **EXTERIOR ELEVATION**  
 NORTH  
 SCALE: 3/16" = 1'-0"



**D** **EXTERIOR ELEVATION**  
 EAST  
 SCALE: 3/16" = 1'-0"

**DEMOLITION KEY NOTES**

- A** (E) STRUCTURAL POST LOCATION
- B** DEMO (E) STEEL WINDOW UNIT
- C** DEMO (E) STEEL VERTICAL MULLION
- D** PREVIOUS WINDOW INFILL
- E** DEMO (E) WOOD TRIM
- F** (E) CEMENT PLASTER WALL FINISH
- G** (E) WOOD SILL TO REMAIN

**KEY NOTES**

- ITEMS NOT LISTED AS EXISTING OR (E) ARE TO BE CONSIDERED NEW
- 1** VERTICAL MULLION - BY WINDOW MANUFACTURER
  - 2** NEW VINYL WINDOW UNIT

**GENERAL NOTES**

1. CONTRACTOR IS TO PROTECT ALL TREES, SHRUBBERY & MECHANICAL EQUIPMENT ADJACENT TO THE BUILDING FROM DAMAGE DURING CONSTRUCTION.
2. FIELD-VERIFY EXISTING CONSTRUCTION DEPICTED IN THESE DRAWINGS AS IT IS UNCOVERED DURING CONSTRUCTION. NOTIFY THE ARCHITECT PROMPTLY IF EXISTING CONDITIONS ARE NOT AS INDICATED.
3. PROVIDE TEMPORARY DUSTPROOF PARTITIONS AS NECESSARY FOR SEPARATION OF CONSTRUCTION AREAS AND ADJACENT OCCUPIED AREAS.
4. ALL EXISTING CONSTRUCTION, FIXTURES, EQUIPMENT AND FINISHES TO REMAIN SHALL BE PROTECTED FROM DAMAGE DURING DEMOLITION AND NEW CONSTRUCTION.

**LEAD BASED PAINT NOTE**

CONTRACTOR SHALL HAVE AT LEAST ONE EMPLOYEE ON SITE AT ALL TIMES WHO HAS RECEIVED EPA LEAD TRAINING. CERTIFICATE OF COMPLETION OF TRAINING TO BE FURNISHED AT DISTRICTS REQUEST.

**LEGEND**

- REMOVE PORTION OF (E) WINDOW SYSTEM PER APPLICABLE WINDOW DETAILS. PREPARE FOR NEW WINDOW SYSTEM. INSTALL NEW WINDOW SYSTEM.

Copyright © 2015

All ideas, designs, arrangements and plans indicated or represented by this drawing are created by and the property of NICHOLS MELBURG and ROSSETTO and were created, evolved and developed for use on, and in conjunction with, the specified project. None of such ideas, designs, arrangements or plans shall be used by, or disclosed to any person, firm or corporation for any purpose whatsoever without the written permission of NICHOLS MELBURG and ROSSETTO.

**NICHOLS  
MELBURG  
ROSSETTO**  
 ARCHITECTS + ENGINEERS  
 300 KNOLLCREST DRIVE  
 REDDING, CA 96002  
 (530) 222-3300 (530) 222-3538 FAX  
 http://www.nmrdesign.com

**CONSULTANTS**

**LICENSE STAMPS**



**PROJECT NAME**  
A WINDOW REPLACEMENT FOR

FALL RIVER ELEMENTARY SCHOOL

FALL RIVER JOINT UNIFIED SCHOOL DISTRICT  
FALL RIVER MILLS, CA

**SHEET TITLE**  
DEMO/NEW WORK WINDOW PLANS & ELEVATIONS

**DRAWING STATUS**  
CONSTRUCTION DOCUMENT SET  
FOR CONSTRUCTION

**REVISIONS**

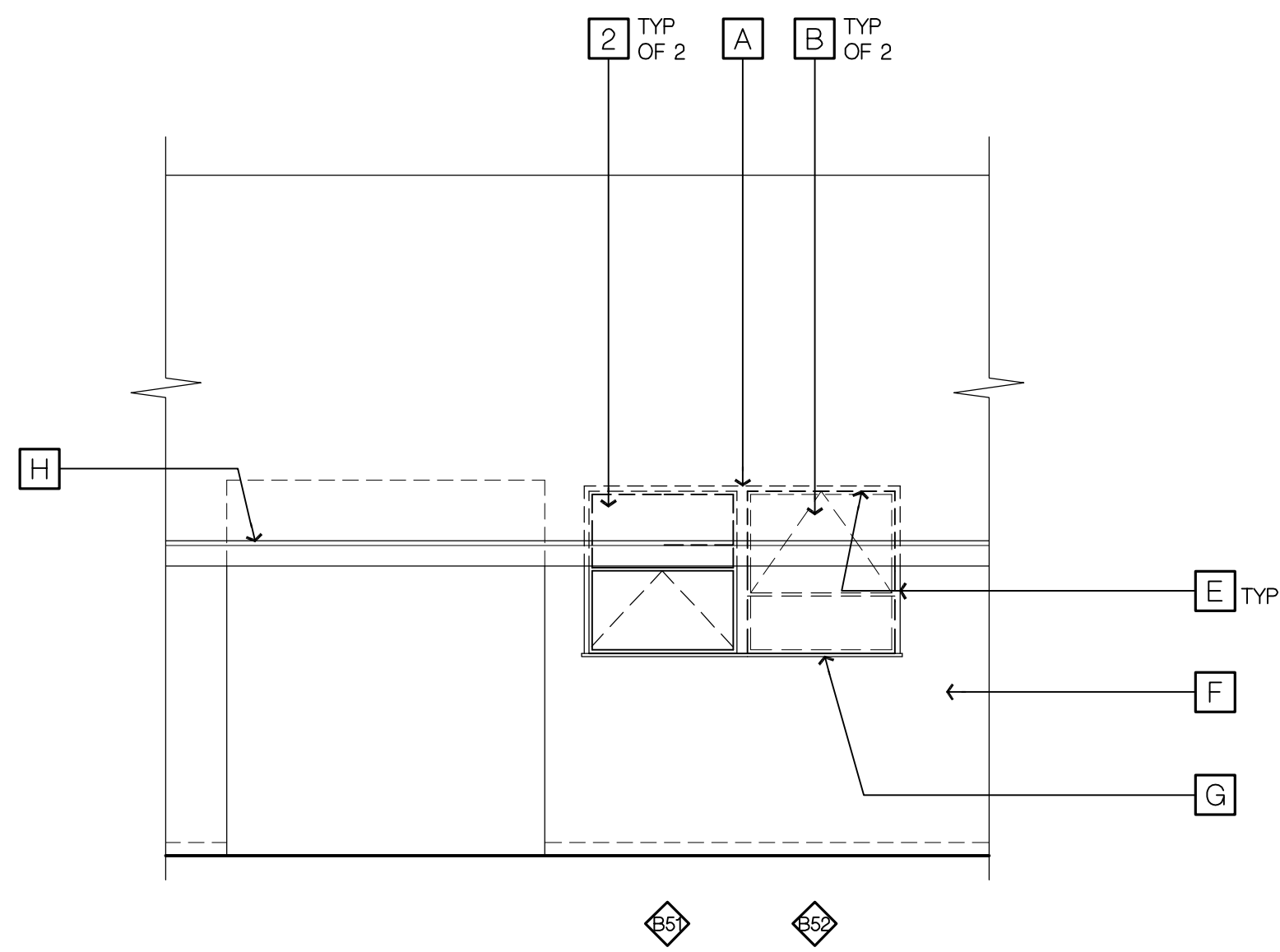
Sym.	Description	By	Date

Drawn By	DF
Checked By	WT
Date Drawn	4.17.15
Scale	AS NOTED
Job No.	14-2674-10

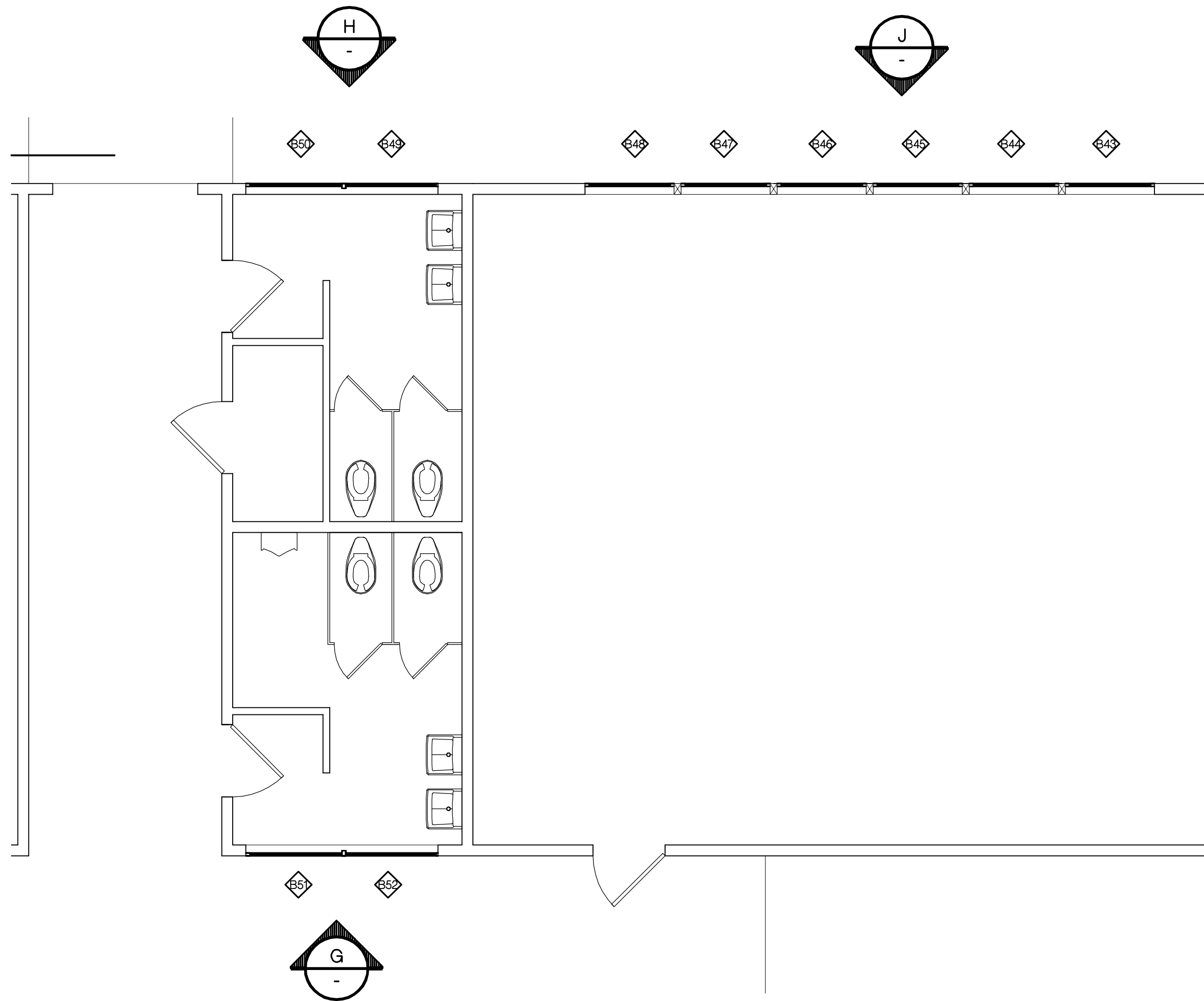
**SHEET No.**

A230

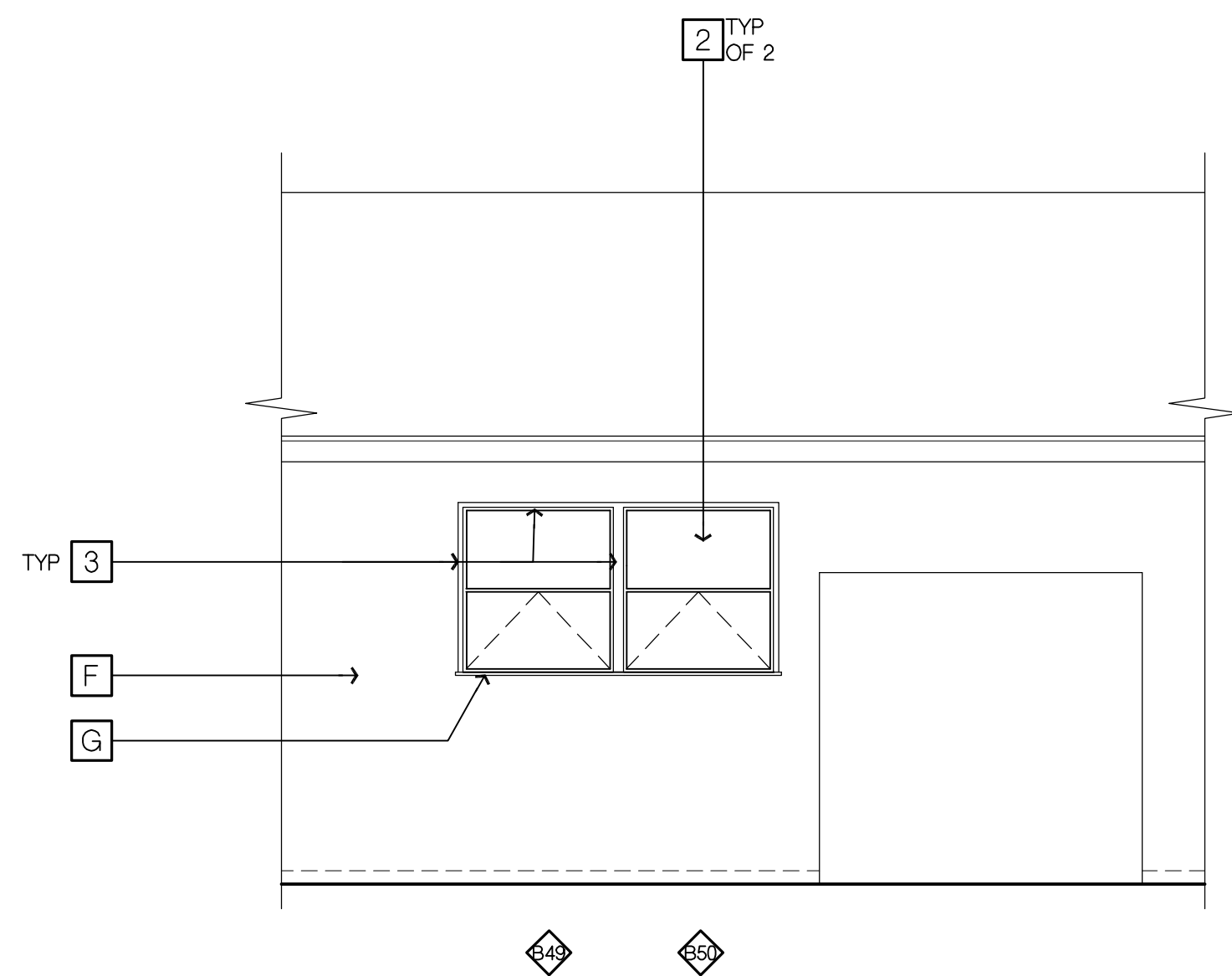
LogIn Name: Dean F  
 Pct Date: May 06, 2015 - 10:42 am  
 Plo Name: N:\Projects\000\Education\14-2674-10 FRSD Fall River Elementary\0-0 CAD Files\Sheet\PHASE -AC\2015.dwg  
 PERS: A:\RES\360\1\_11\_15\10-0-NMR



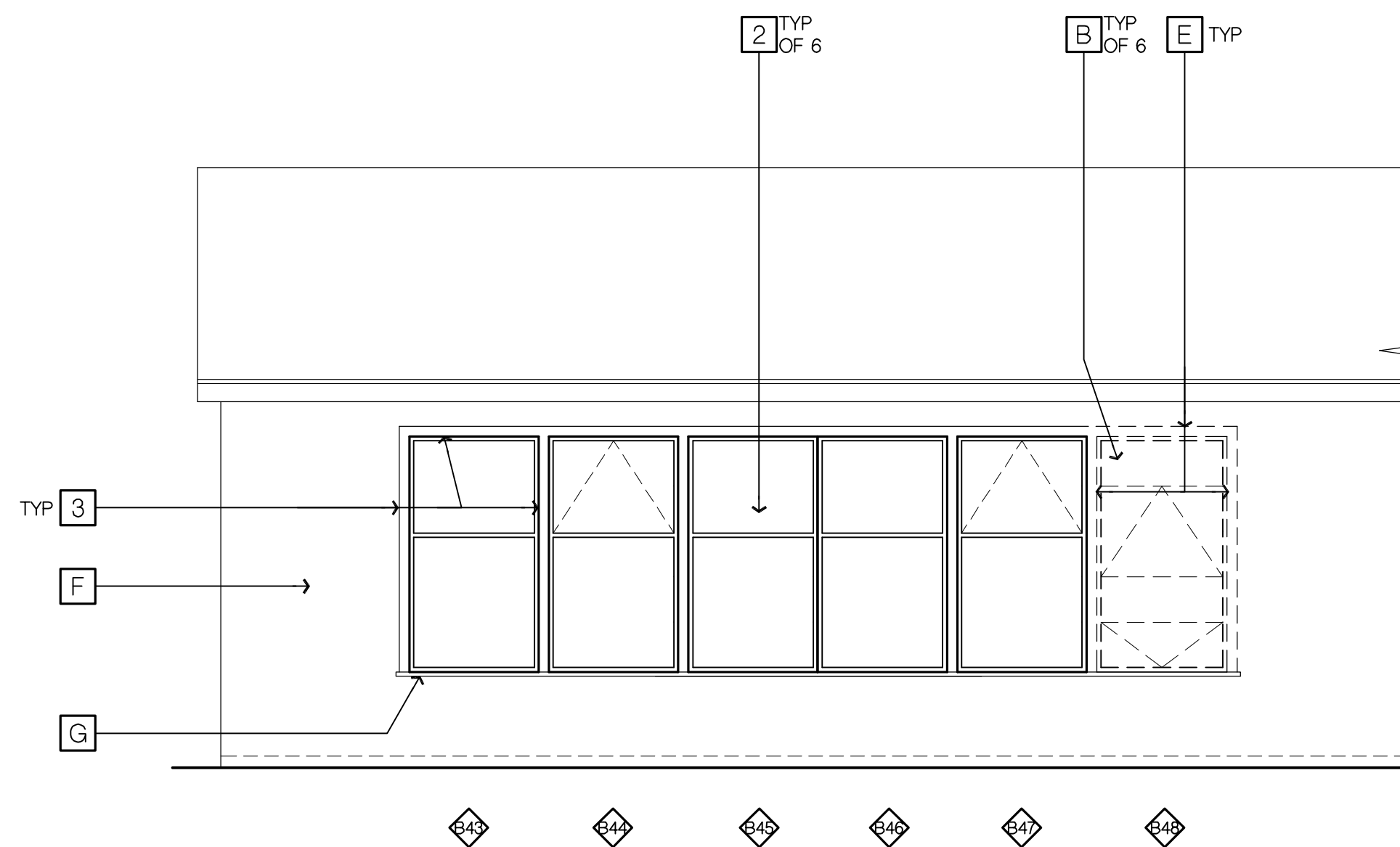
**G** SOUTH  
**EXTERIOR ELEVATION**  
 SCALE 1/4" = 1'-0"



**DEMOLITION/NEW WORK WINDOW PLAN**  
 SCALE 1/4" = 1'-0"



**H** NORTH  
**EXTERIOR ELEVATION**  
 SCALE 1/4" = 1'-0"



**J** NORTH  
**EXTERIOR ELEVATION**  
 SCALE 1/4" = 1'-0"

**DEMOLITION KEY NOTES**

- A** (E) STRUCTURAL POST LOCATION
- B** DEMO (E) STEEL WINDOW UNIT
- C** DEMO (E) STEEL VERTICAL MULLION
- D** PREVIOUS WINDOW INFILL
- E** DEMO (E) WOOD TRIM
- F** (E) CEMENT PLASTER WALL FINISH
- G** (E) WOOD SILL TO REMAIN
- H** EXISTING FACIA/ROOFLINE

**KEY NOTES**

ITEMS NOT LISTED AS EXISTING OR (E) ARE TO BE CONSIDERED NEW

- 1** INFILL FRAMING
- 2** NEW VINYL WINDOW UNIT
- 3** 1 x PAINTED TRIM - MATCH (E)

**GENERAL NOTES**

1. CONTRACTOR IS TO PROTECT ALL TREES, SHRUBBERY & MECHANICAL EQUIPMENT ADJACENT TO THE BUILDING FROM DAMAGE DURING CONSTRUCTION.
2. FIELD-VERIFY EXISTING CONSTRUCTION DEPICTED IN THESE DRAWINGS AS IT IS UNCOVERED DURING CONSTRUCTION. NOTIFY THE ARCHITECT PROMPTLY IF EXISTING CONDITIONS ARE NOT AS INDICATED.
3. PROVIDE TEMPORARY DUSTPROOF PARTITIONS AS NECESSARY FOR SEPARATION OF CONSTRUCTION AREAS AND ADJACENT OCCUPIED AREAS.
4. ALL EXISTING CONSTRUCTION, FIXTURES, EQUIPMENT AND FINISHES TO REMAIN SHALL BE PROTECTED FROM DAMAGE DURING DEMOLITION AND NEW CONSTRUCTION.

**LEAD BASED PAINT NOTE**

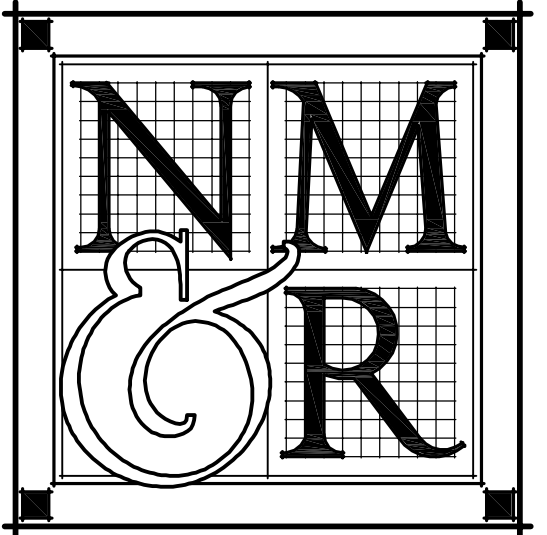
CONTRACTOR SHALL HAVE AT LEAST ONE EMPLOYEE ON SITE AT ALL TIMES WHO HAS RECEIVED EPA LEAD TRAINING. CERTIFICATE OF COMPLETION OF TRAINING TO BE FURNISHED AT DISTRICTS REQUEST.

**LEGEND**

- ◊ REMOVE PORTION OF (E) WINDOW SYSTEM PER APPLICABLE WINDOW DETAILS. PREPARE FOR NEW WINDOW SYSTEM. INSTALL NEW WINDOW SYSTEM

Copyright © 2015

All ideas, designs, arrangements and plans indicated or represented by this drawing are created by and the property of NICHOLS MELBURG and ROSSETTO and were created, evolved and developed for use on, and in conjunction with, the specified project. None of such ideas, designs, arrangements or plans shall be used by, or disclosed to any person, firm or corporation for any purpose whatsoever without the written permission of NICHOLS MELBURG and ROSSETTO.



**NICHOLS  
 MELBURG  
 &  
 ROSSETTO**  
 ARCHITECTS + ENGINEERS  
 300 KNOLLCREST DRIVE  
 REDDING, CA 96002  
 (530) 222-3300 (530) 222-3538 FAX  
 http://www.nmrdesign.com

CONSULTANTS

LICENSE STAMPS



PROJECT NAME  
**A WINDOW  
 REPLACEMENT  
 FOR**

**FALL RIVER  
 ELEMENTARY  
 SCHOOL**

**FALL RIVER JOINT  
 UNIFIED SCHOOL DISTRICT  
 FALL RIVER MILLS, CA**

SHEET TITLE  
**DEMO/NEW WORK  
 WINDOW PLANS &  
 ELEVATIONS**

**DRAWING STATUS  
 CONSTRUCTION  
 DOCUMENT SET  
 FOR CONSTRUCTION**

REVISIONS  

Sym.	Description	By	Date

Drawn By	DF
Checked By	WT
Date Drawn	4.17.15
Scale	AS NOTED
Job No.	14-2674-10

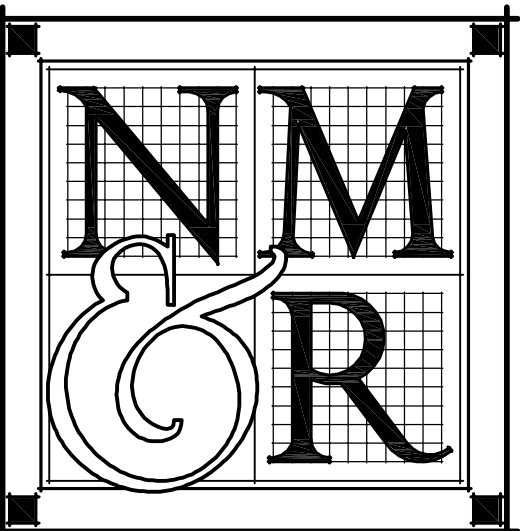
SHEET No.

**A240**

## DEMOLITION KEY NOTES

- A** (E) STRUCTURAL POST LOCATION
- B** DEMO (E) STEEL WINDOW UNIT
- C** DEMO (E) STEEL VERTICAL MULLION
- D** PREVIOUS WINDOW INFILL
- E** DEMO (E) WOOD TRIM
- F** (E) CEMENT PLASTER WALL FINISH
- G** (E) WOOD SILL TO REMAIN
- H** EXISTING FACIA/ROOFLINE

Copyright © 2015  
 All ideas, designs, arrangements and plans indicated or represented by this drawing are owned by, and the property of, NICHOLS MELBURG and ROSSETTO and were created, evolved and developed for use on, and in conjunction with, the specified project. None of such ideas, designs, arrangements or plans shall be used by, or disclosed to any person, firm or corporation for any purpose whatsoever without the written permission of NICHOLS MELBURG and ROSSETTO.



**NICHOLS  
MELBURG  
ROSSETTO**  
 ARCHITECTS + ENGINEERS  
 300 KNOLLCREST DRIVE  
 REDDING, CA 96002  
 (530) 222-3300 (530) 222-3538 FAX  
 http://www.nmrdesign.com

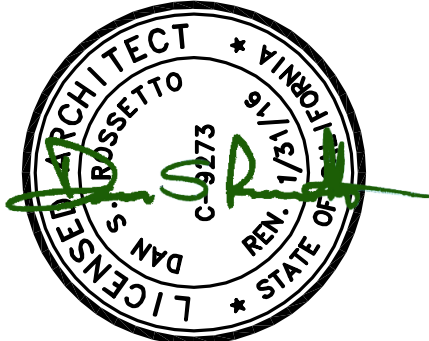
CONSULTANTS

## KEY NOTES

ITEMS NOT LISTED AS EXISTING OR (E) ARE TO BE CONSIDERED NEW

- 1** INFILL FRAMING
- 2** NEW VINYL WINDOW UNIT
- 3** 1 x PAINTED TRIM - MATCH (E)

LICENSE STAMPS



PROJECT NAME  
**A WINDOW  
 REPLACEMENT  
 FOR  
 FALL RIVER  
 ELEMENTARY  
 SCHOOL**

FALL RIVER JOINT  
 UNIFIED SCHOOL DISTRICT  
 FALL RIVER MILLS, CA

SHEET TITLE  
**DEMO/NEW WORK  
 WINDOW PLANS &  
 ELEVATIONS**

DRAWING STATUS  
**CONSTRUCTION  
 DOCUMENT SET  
 FOR CONSTRUCTION**

REVISIONS

Sym.	Description	By	Date

## GENERAL NOTES

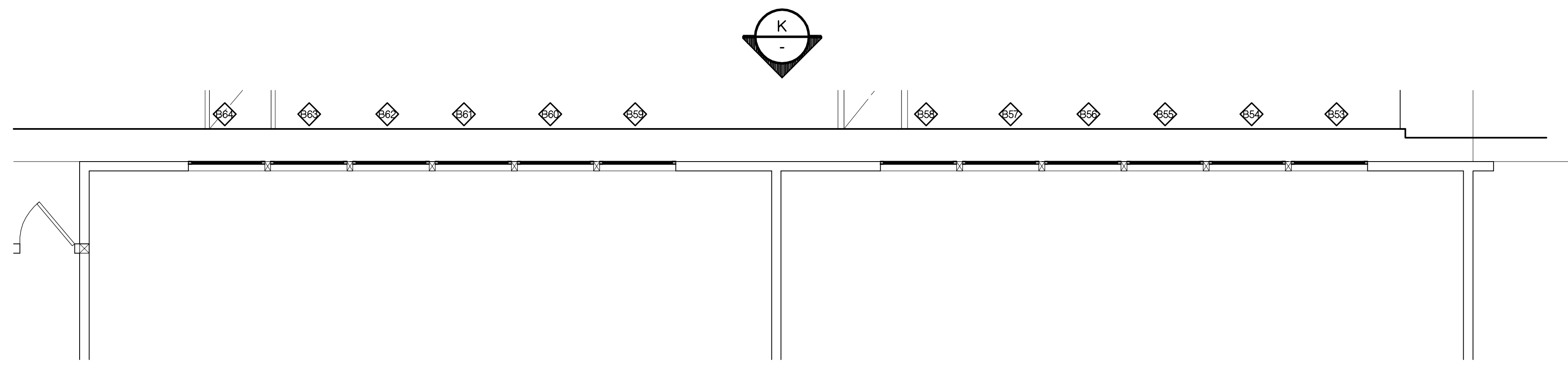
- CONTRACTOR IS TO PROTECT ALL TREES, SHRUBBERY & MECHANICAL EQUIPMENT ADJACENT TO THE BUILDING FROM DAMAGE DURING CONSTRUCTION.
- FIELD-VERIFY EXISTING CONSTRUCTION DEPICTED IN THESE DRAWINGS AS IT IS UNCOVERED DURING CONSTRUCTION. NOTIFY THE ARCHITECT PROMPTLY IF EXISTING CONDITIONS ARE NOT AS INDICATED.
- PROVIDE TEMPORARY DUSTPROOF PARTITIONS AS NECESSARY FOR SEPARATION OF CONSTRUCTION AREAS AND ADJACENT OCCUPIED AREAS.
- ALL EXISTING CONSTRUCTION, FIXTURES, EQUIPMENT AND FINISHES TO REMAIN SHALL BE PROTECTED FROM DAMAGE DURING DEMOLITION AND NEW CONSTRUCTION.

## LEAD BASED PAINT NOTE

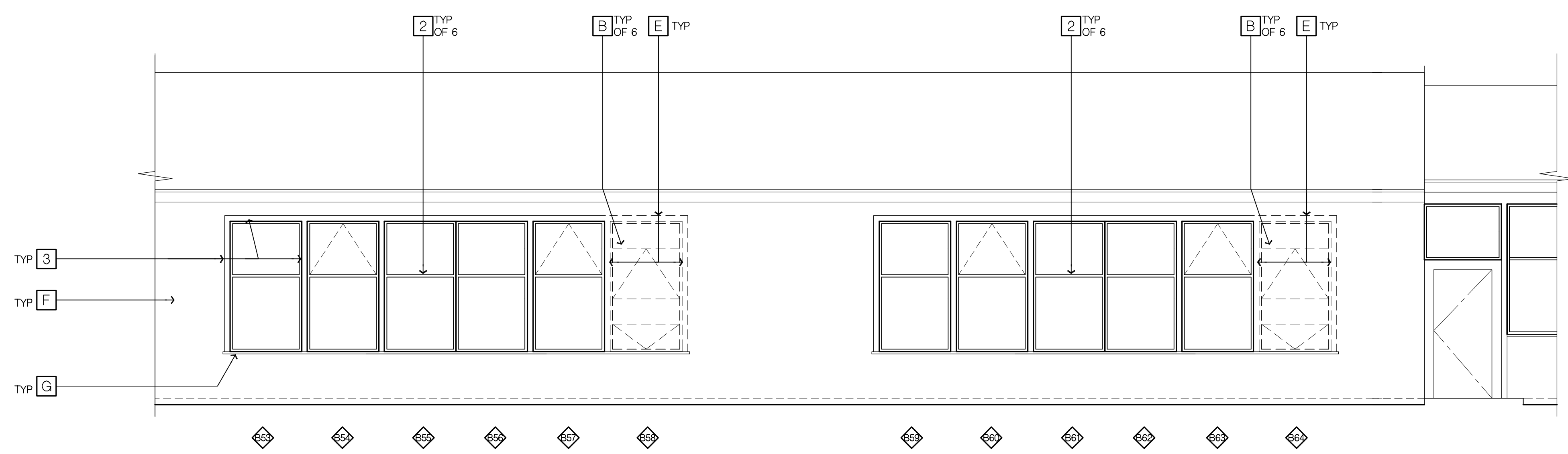
CONTRACTOR SHALL HAVE AT LEAST ONE EMPLOYEE ON SITE AT ALL TIMES WHO HAS RECEIVED EPA LEAD TRAINING. CERTIFICATE OF COMPLETION OF TRAINING TO BE FURNISHED AT DISTRICTS REQUEST.

## LEGEND

- ◊ REMOVE PORTION OF (E) WINDOW SYSTEM PER APPLICABLE WINDOW DETAILS. PREPARE FOR NEW WINDOW SYSTEM. INSTALL NEW WINDOW SYSTEM



**DEMOLITION/NEW WORK WINDOW PLAN**  
 SCALE: 1/4" = 1'-0"



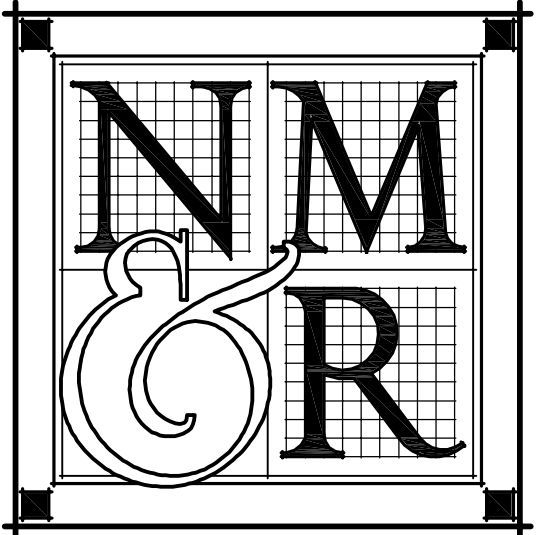
**K EXTERIOR ELEVATION**  
 SCALE: 1/4" = 1'-0"

LogIn Name: Dean F  
 Pct Date: May 06, 2015 - 10:41 am  
 Plo Name: N:\Projects\000\Education\14-2674-10 FRSD Fall River Elementary\10-0 CAD Files\Sheet\PHASE 1\AC20.dwg  
 PERS: A:\RES\_2015\1\_11\_15\10-0\_NMR

SHEET No.

**A250**

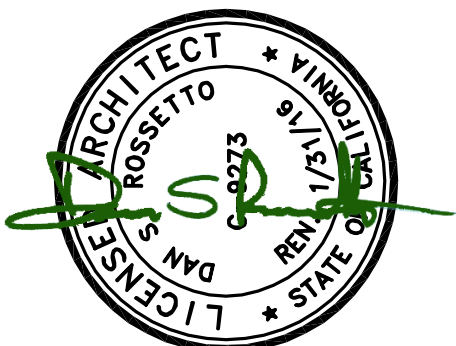
Copyright © 2015  
 All ideas, designs, arrangements and plans indicated or represented by this drawing are created by and the property of NICHOLS MELBURG and ROSSETTO and were created, evolved and developed for use on, and in conjunction with, the specified project. None of such ideas, designs, arrangements or plans shall be used by, or disclosed to any person, firm or corporation for any purpose whatsoever without the written permission of NICHOLS MELBURG and ROSSETTO.



**NICHOLS  
 MELBURG  
 ROSSETTO**  
 ARCHITECTS + ENGINEERS  
 300 KNOLLCREST DRIVE  
 REDDING, CA 96002  
 (530) 222-3300 (530) 222-3538 FAX  
 http://www.nmrdesign.com

CONSULTANTS

LICENSE STAMPS



PROJECT NAME  
**A WINDOW  
 REPLACEMENT  
 FOR  
 FALL RIVER  
 ELEMENTARY  
 SCHOOL**

FALL RIVER JOINT  
 UNIFIED SCHOOL DISTRICT  
 FALL RIVER MILLS, CA

SHEET TITLE

DETAILS

2

DRAWING STATUS  
**CONSTRUCTION  
 DOCUMENT SET**  
 FOR CONSTRUCTION

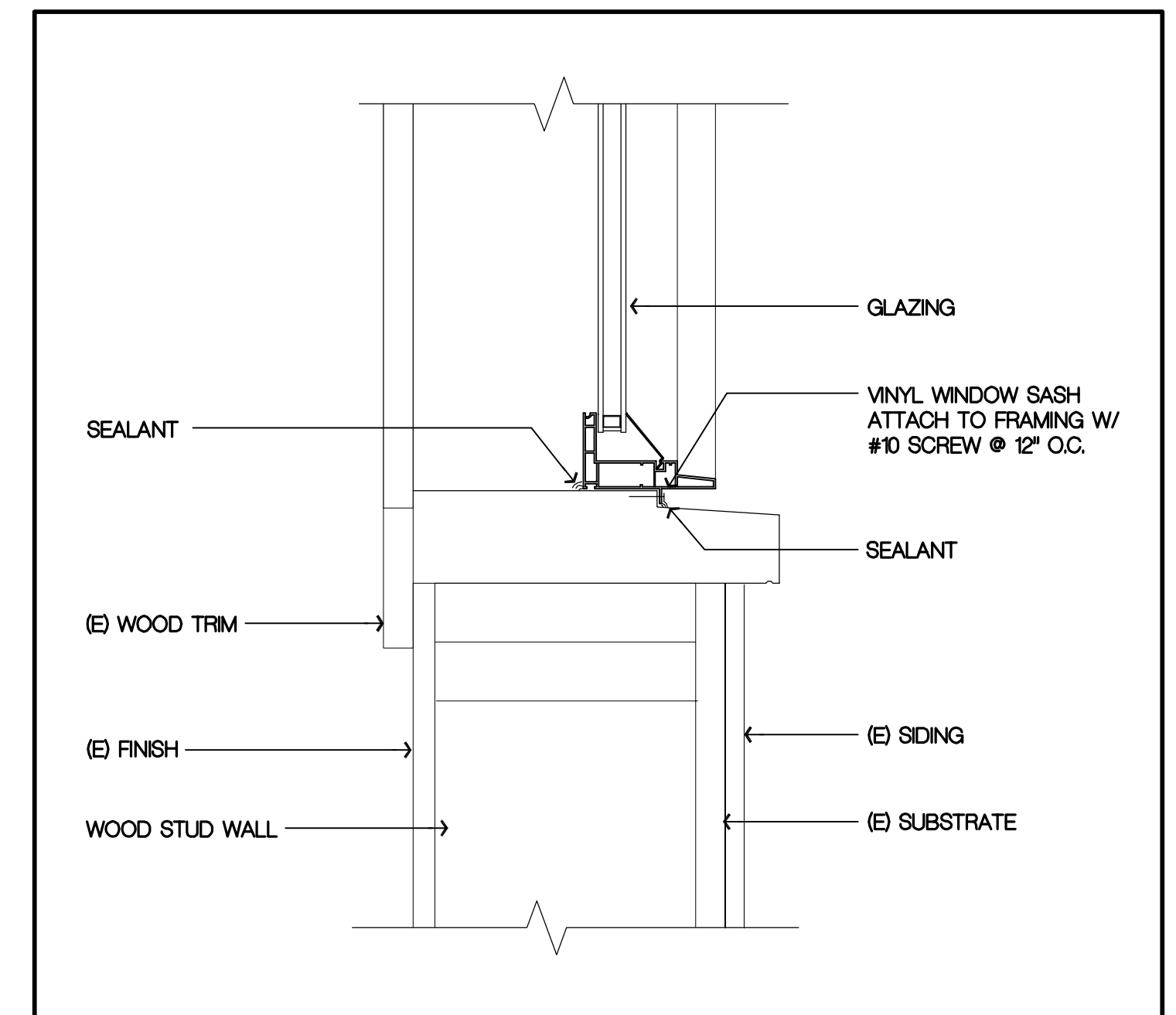
REVISIONS

Sym.	Description	By	Date

Drawn By	NMR
Checked By	
Date Drawn	4.17.15
Scale	AS NOTED
Job No.	14-2674.10

SHEET No.

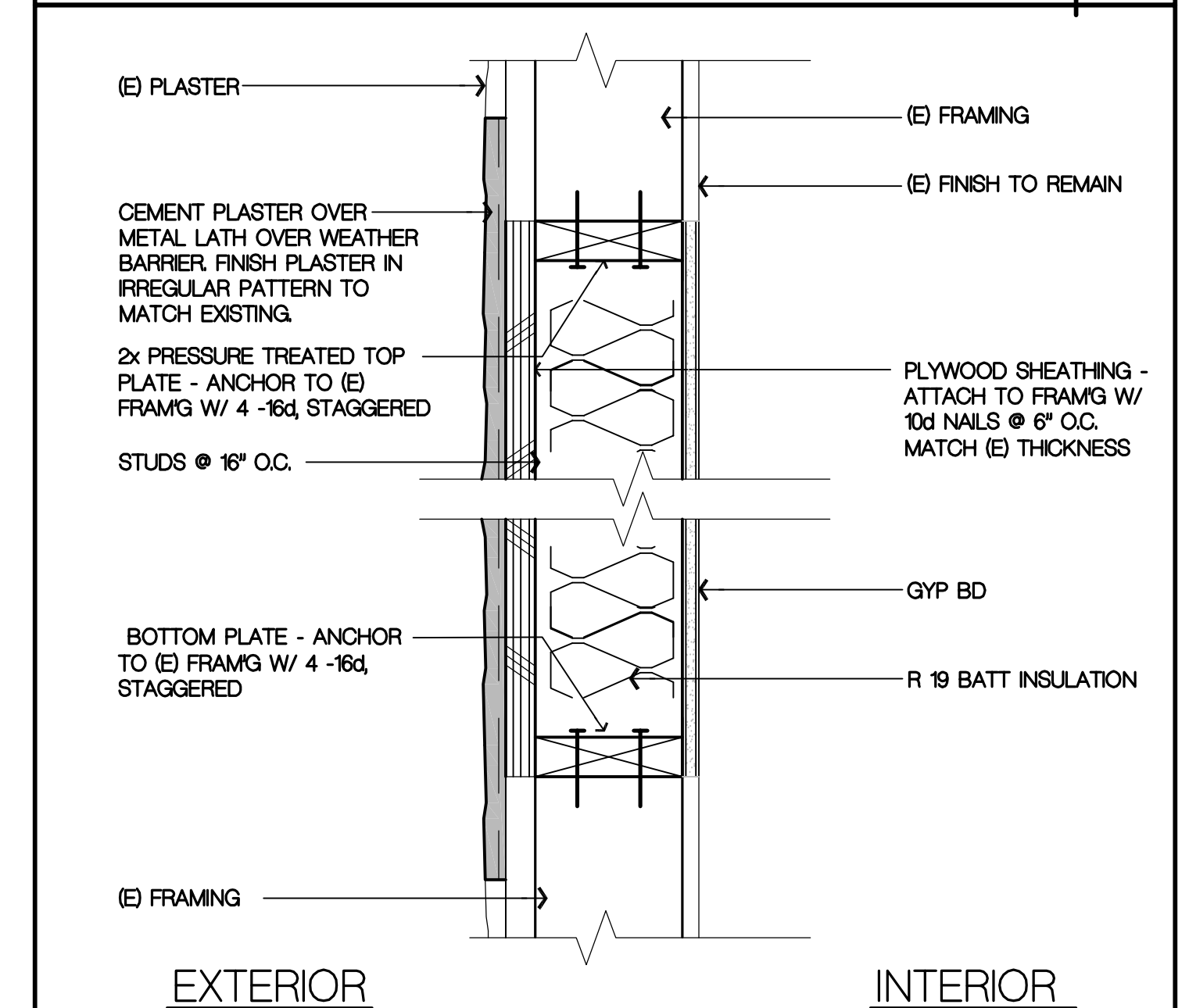
**A700**



**WINDOW SILL**

SCALE: 3" = 1'-0"

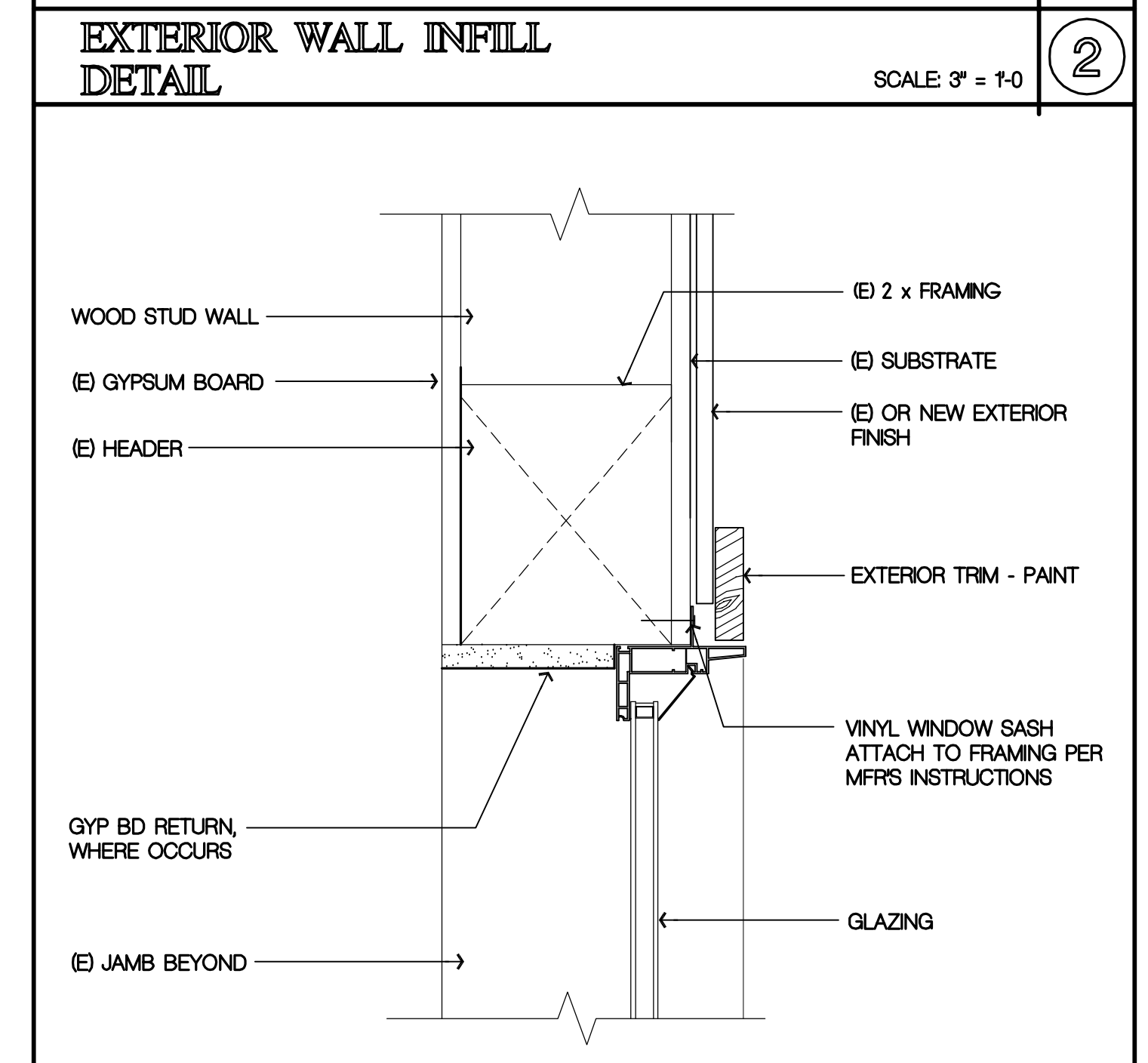
1



**EXTERIOR WALL INFILL  
 DETAIL**

SCALE: 3" = 1'-0"

2



**WINDOW HEAD  
 JAMB SIM.**

SCALE: 3" = 1'-0"

3